

1998

SECTION

LAND CORNER RECORDATION CERTIFICATE
Filing Requirement of Act 74, Mich. P.A. 1970

For corners in

Benzie (County)	Located In:	Corner Code #
1. Public Land Survey	T 27N R 14W T _____ T _____	D-9 _____ _____
2. Property Controlling in Section	S _____ S _____	T _____ T _____
3. Miscellaneous Property in Sec.	S _____ S _____	T _____ T _____

STATE OF MICHIGAN
BENZIE COUNTY
RECORDED

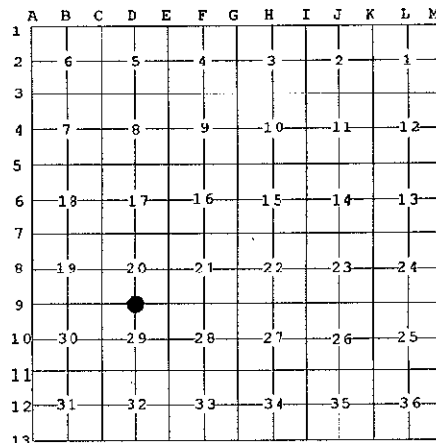
27 JAN 1999 8:57:05 AM
MICHELLE R. GRAY
REGISTER OF DEEDS
PAGES ONE

Register of Deeds Stamp & File Num.

4. Lot No. _____, Recorded Plat _____

5. Private Claims _____

I, Craig W. McVean, in a field survey on July 6, 19 98 do hereby state that under requirements of P.A. 74, Michigan P.A. of 1970, the corner points mentioned in lines 1 and 2 above were in conformance with regulations and rules therefore as required in the current manual of survey instructions of the United States Department of the Interior, Bureau of Land Management or by a decree of a Court of Law and /or that the corner points mentioned in lines 3, 4 and 5 above were in conformance with the rules of the Michigan Board of Land Surveyors or by a Decree of a Court of Law; established, re-established, monumented, recovered, found as expressed below:



NOTE: Not more than 2 corners, all in the same town and range, may be recorded on this certificate.

A. Description of original monument and accessories and/or subsequent restoration:

- D-9 - GLO - Set Qtr Post - J. Hunt - 1850
West corrected between Sec's 20 & 29 from corner of Sec's 21-20-29-28, 40.12 Ch.
Beech 12" S65°W 20L
Hemlock 8" N20°E 15L
- Old Co. Surveyor Notes - Pages 196 & 197 - J.A. Pettitt - December 12, 1897
For survey of S-20, T27N R14W
" ..at 40.39 intersected 10 lks south of F."
- Old Co. Surveyor Notes - Record 2, Pg 90 & 91 - F. S. Haswell - March 15, 1909
Survey for S-29, T27N R14W at position "5" states
"Planted a charcoal brand & 1 1/4 in. iron pipe 2 ft deep halfway and in a right line between 1 & 2. Old 1/4 corner entirely gone."

Ratified by Peer Group
In accordance with P.A. 345
Chairman [Signature]
Date JUNE 24, 1998

B. Description of corner evidence found and/or method applied in restoring or reestablishing corner:

- D-9 - 1/4 Corner common to sections 20 and 29. Found 1 1/4" pipe for N 1/4 S-29 as called for in 1909 survey by F. S. Haswell of S-29. Pipe fits midway and on line, as called for by F. S. Haswell, within 2'±. N-S trail road is West 105'. Removed 1 1/4"x 3.3' long Iron Pipe & find 7 small pieces of charcoal down 3'±. Monument accepted as a careful and faithful re-establishment of the position of the original corner.

C. Description of monument for corner and accessories established to perpetuate locating the position of the corner:

- D-9 - Replaced found 1 1/4" Pipe with Benzie Co. Concrete Monument. Placed charcoal at base of monument as a memorial.
 - 6" Red Oak N55°W 8.02'
 - 10" Sugar Maple N34°E 34.07'
 - 11" Twin Red Maple S76°E 43.66'
 - 7" Red Oak S05°E 11.71'
 - Set orange Carsonite post 1' N.



Signed by Craig W. McVean
Surveyor's Michigan License No. 39088

Date 9/29/1998