

RATIFIED BY THE BERRIEN COUNTY SURVEY PEER GROUP AS THE OFFICIAL CORNER UNDER MICHIGAN PUBLIC ACT 345 OF 1990

RECORDED

BERRIEN COUNTY REMONUMENTATION

LAND CORNER RECORDATION CERTIFICATE

99 OCT 29 AM 9:20

Filing Requirement of Act 74, Mich. P.A. 1970

JERNICE TRETHERWAY REGISTER OF DEEDS BERRIEN COUNTY, MICHIGAN

For corners in

BERRIEN COUNTY..... Located in: ..COLOMA..... Township Corner Code #

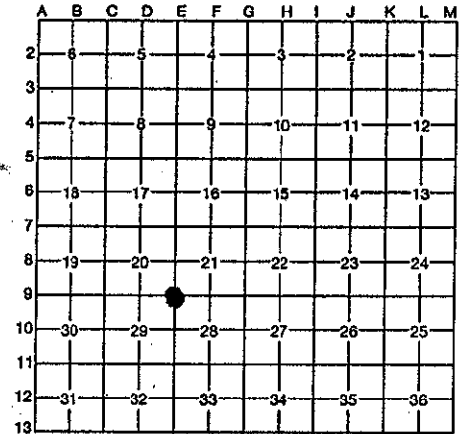
- 1. Public Land Survey T.3 S.. R.17 W. ....E-9.....  
T..... R..... NE CORNER, SECTION 29
- 2. Property Controlling S..... T..... R.....  
in Section S..... T..... R.....
- 3. Miscellaneous S..... T..... R.....  
Property in Sec. S..... T..... R.....
- 4. Lot No. ...., Recorded Plat .....
- 5. Private Claims.....

10/29/99 111#6660 A55  
CORNER \$9.00  
10/29/99 111#6660 A55  
STATE REMON FEE \$2.00  
Register of Deeds Stamp & File Number

I, ..... **George J. Mitchell**....., in a field survey on ...**June 12, 1999**..... do hereby certify that under requirements of P.A. 74, Michigan P.A. of 1970, the corner points mentioned in lines 1 and 2 above were in conformance with regulations and rules therefore as required in the current manual of survey instructions of the United States Department of the Interior, Bureau of Land Management or by decree of a Court of Law and/or that the corner points mentioned in lines 3, 4, and 5 above were in conformance with the rules of the Michigan Board of Land Surveyors or by decree of a Court of Law, established, re-established, monumented, re-monumented, recovered, found as expressed below:

NOTE: Not more than 4 corners, all in the same town & range, may be recorded on this certificate.

A. Description of original monument and accessories and/or subsequent restoration:



SEE SHEET 2 FOR CORNER HISTORY

B. Description of corner evidence found and/or method applied in restoring or reestablishing corner:

DEC 28 1999

SECTION

FOUND RAILROAD SPIKE FROM ITEMS 7 THROUGH 10 IN THE CORNER HISTORY AND IS ACCEPTED AS A CAREFUL AND FAITHFUL PERPETUATION OF THE POSITION OF THE ORIGINAL CORNER.

REPLACED SPIKE WITH BERRIEN COUNTY STANDARD 1" BY 36" LONG PIPE AND BRASS CAP WITH DRILL HOLE AND PS19618 STAMPED ON TOP. PIPE WAS SET IN MONUMENT BOX

THIS CORNER WAS APPROVED BY THE BERRIEN COUNTY SURVEYOR'S PEER GROUP ON JUNE 22, 1999

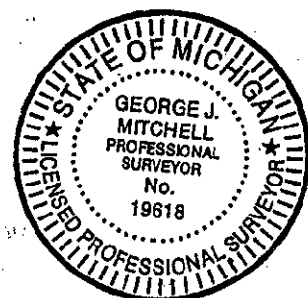
C. Description of monument for corner and accessories established to perpetuate locating the position of the corner:

NORTHEAST CORNER OF SECTION 29, TOWN 3 SOUTH, RANGE 17 WEST.

WITNESS TAG & NAIL IN NORTHWEST SIDE OF 20" MAPLE	AZ.	040°	43.48 FEET
WITNESS TAG & NAIL IN NORTHEAST SIDE OF 28" MAPLE	AZ.	325°	55.20 FEET
NORTHEAST CORNER OF HOUSE FOUNDATION	AZ.	225°	74.52 FEET
IRON ON TOP OF RIGHT OF WAY CONCRETE MARKER	AZ.	170°	31.92 FEET
NORTH QUARTER POST OF SECTION 28, T 3 S, R 17 W	AZ.	090°	2640.51 FEET

Signed by George J. Mitchell  
Surveyor's Michigan License No. ....19618.....

Date. 10/10/99



SHEET 1 OF 2

GOVERNMENT CORNER HISTORY

NORTHEAST CORNER OF SECTION 29  
TOWN 3 SOUTH, RANGE 17 WEST

E-9

- 6
1. GLO SET POST
  2. L. HEMINGWAY 1884  
CO. SURVEYOR FD STAKE & SET IRON  
AGREE WITH ORIGINAL WITNESSES  
W. OAK 30 N46E 4 LKS.  
MEAS 39.93 CH (2635.4') EAST TO S1/4 POST
  3. W. G. ANDRUS 1946 & 1954 "CROSS"  
NO WITNESSES
  4. E.R. STEFAN 1972 NAIL IN PAVEMENT  
NAIL WEST 11.71'  
IRON PIPE SOUTH 33.0'  
IRON PIPE SOUTH 93.0'  
MEAS. 2640.40' EAST TO S1/4 POST
  5. E.R. STEFAN 1980 SAME AS ABOVE
  6. E.R. STEFAN 1984 SAME AS ABOVE
  7. W. STREBS 1985 RAILROAD SPIKE  
P.K. NAIL WEST 11.71'  
I.P. SOUTH 33.0'  
I.P. SOUTH 93.0'
  8. J. KAMER 1989 FD 1" IRON BAR  
P.K. NAIL WEST 11.44'  
POWER POLE N15W 34.97'  
16" BEECH N50E 43.60' (MAPLE)
  9. J. KAMER 1995 FD 1" IRON BAR  
NAIL WEST 11.44'  
POWER POLE N75W 34.97'  
16" BEECH N50E 43.60' (MAPLE)  
CL TOP HYDRANT N70W 41.88'
  10. D. SWAR 1998 FD RAILROAD SPIKE  
24" MAPLE N40E 43.67'  
IRON PIPE SOUTH 93.00'  
POWER POLE N60W 34.90'  
FENCE COR. S50W 45.17'
  11. G. MITCHELL 1999 FD RAILROAD SPIKE WITH "+"  
ABOVE WITNESSES CHECK  
MEAS 2640.51' EAST TO S1/4 POST

RF

DEC 23 1999

SECTION