

CERTIFIED BY THE BERRIEN COUNTY SURVEY PEER GROUP AS THE OFFICIAL CORNER UNDER MICHIGAN PUBLIC ACT 345 OF 1990

BERRIEN COUNTY REMONUMENTATION

98 OCT 28 AM 11:02

LAND CORNER RECORDATION CERTIFICATE

BERNICE TRETHERWAY REGISTER OF DEEDS BERRIEN COUNTY, MICHIGAN

Filing Requirement of Act 74, Mich. P.A. 1970

9-10-98 For corners in

WATERVLIET Township

BERRIEN Located in: Corner Code #

- 1. Public Land Survey T.3.S R.17 W. M-7 SE COR., SEC. 13
2. Property Controlling in Section
3. Miscellaneous Property in Sec.
4. Lot No. Recorded Plat
5. Private Claims

10/28/98 111#4148 A66 CORNER \$9.00
10/28/98 111#4148 A66 STATE REMON FEE \$2.00

Register of Deeds Stamp & File Number

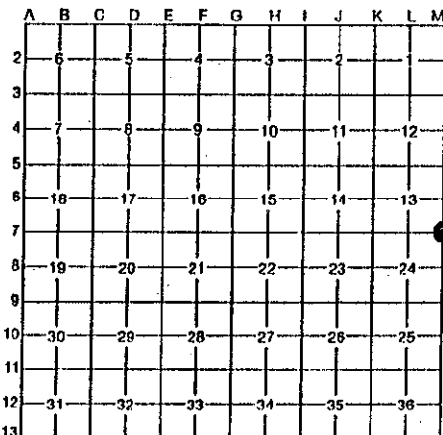
I, George J. Mitchell in a filed survey on September 2, 1998 do hereby certify that under requirements of P.A. 74, Michigan P.A. of 1970, the corner points mentioned in lines 1 and 2 above were in conformance with regulations and rules therefore as required in the current manual of survey instructions of the United States Department of the Interior, Bureau of Land Management or by decree of a Court of Law and/or that the corner points mentioned in lines 3, 4, and 5 above were in conformance with the rules of the Michigan Board of Land Surveyors or by decree of a Court of Law, established, re-established, monumented, re-monumented, recovered, found as expressed below:

NOTE: Not more than 4 corners, all in the same town & range, may be recorded on this certificate.

A. Description of original monument and accessories and/or subsequent restoration:

M-7

SEE SHEET 2 OF 2



B. Description of corner evidence found and/or method applied in restoring or reestablishing corner:

M-7) FOUND TAPERED IRON BAR FROM CORNER HISTORY AND ACCEPTED ITS LOCATION AS A CAREFUL AND FAITHFUL PERPETUATION OF THE POSITION OF THE ORIGINAL CORNER.

THIS CORNER WAS APPROVED BY THE BERRIEN COUNTY SURVEYORS PEER GROUP ON SEPTEMBER 10, 1998

C. Description of monument for corner and accessories established to perpetuate locating the position of the corner:

M-7) SOUTHEAST CORNER OF SECTION 13. TOWN 3 SOUTH, RANGE 17 WEST.

REPLACED TAPERED IRON WITH BERRIEN COUNTY STANDARD 1 INCH PIPE. SET BRASS CAP WITH DRILL HOLE AND NUMBER 19618 STAMPED ON TOP. PIPE WAS SET IN A MONUMENT BOX.

- WITNESS TAG & NAIL SET IN SW SIDE OF POWER POLE AZ. 215° 69.33 FEET
WITNESS TAG & NAIL SET IN NE SIDE OF TELEPHONE POLE AZ. 200° 69.61 FEET
NORTHWEST CORNER OF HOUSE AZ. 090° 80.24 FEET
VAN BUREN COUNTY CORNER AZ. 000° 21.14 FEET
CORNER M-7 TO M-6 MEASURED 2623.59 FEET
CORNER M-7 TO M-8 MEASURED 2631.02 FEET

Signed by George J. Mitchell Surveyor's Michigan License No. 19618

Date October 26, 1998



SURVEY & REMONUMENTATION

SHEET 1 OF 2

NOV 20 1998

SECTION

LIBER

4 PAGE

93

GOVERNMENT CORNER HISTORY

SOUTHEAST CORNER SECTION 13  
TOWN 3 SOUTH, RANGE 17 WEST

M-7

- 1827 WILLIAM BROOKFIELD  
SET POST  
13" BEECH S44W 47 LKS  
8" BEECH N40W 23 LKS
- 1971 D. MIDDLETON L.C.R.C.  
FD IRON BAR  
POWER POLE SSE 90.05'  
POWER POLE SSW 88.65'  
ABOVE L.C.R.C. IS FOR THE VAN BUREN CO. CORNER NOT THE BERRIEN
- 1971 D. PEIRCE FD 5/8" IRON BAR  
SAME WITTS AS ABOVE
- 1971 & 1972 A. HOWARD  
POWER POLE SSE 69.90'  
POWER POLE SSW 69.30'
- 1977 E. STEFAN FD IRON  
NO WITNESSES
- 1991 G. MITCHELL FD IRON BAR  
POWER POLE SSE 69.75'  
POWER POLE SSW 69.30'  
NW COR HOUSE EAST 80.20'  
VAN BUREN CORNER - NORTH - 21.2'
- 1998 G. MITCHELL  
FD TAPERED IRON BAR

SURVEY &  
REMONUMENTATION

NOV 20 1998

SECTION