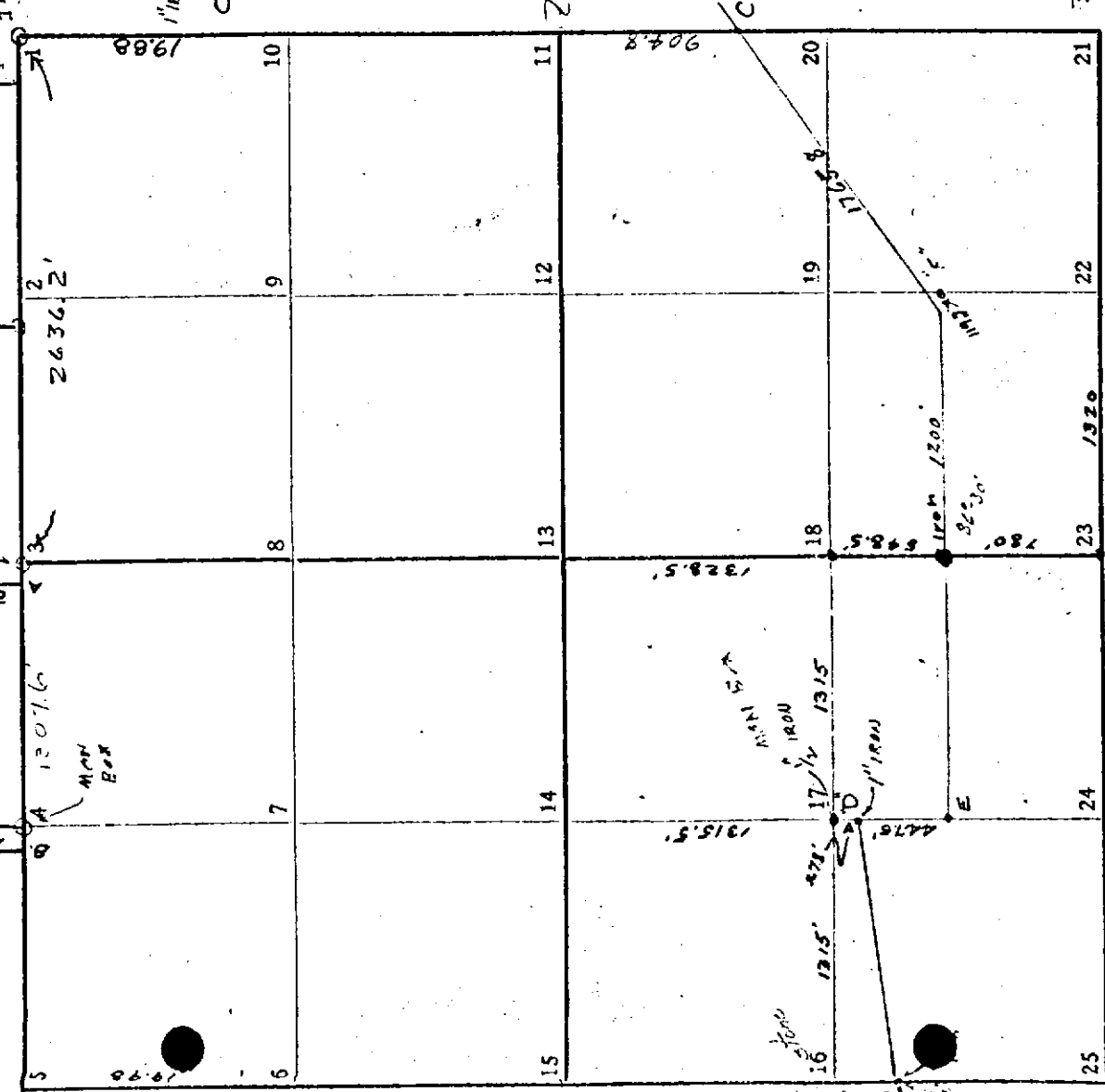


Corrected to Jan. 1975
 " " Dec 1954
 " " Jan. 1960
 " " Nov. 1960

SEC. 4 T. 5 S. R. 17 W.



"D" - 1/4 rod -
 7 1/2' Pole SW 52.98'
 2" Pole SW 35W 64.4'
 Pipe Center SW 1/4 of Sec N 278'
 Guard Post N 35E 23.66'

"E" Pipe set.
 Tel. pole SW 49.0'
 2" Four Neck 83.2'
 Tel. pole N 80E 78.1'
 Power Pole NE 100.6'

"F" Iron in fence line
 12" Ash N 21.0'
 13" Ash S 12.2'

Corner Fence Post South 16.7'
 Fence Post SW 22.1'

Stone - On West Side Conference Post
 1' W of 1/2 mile of fence line

2
 Stone - 8" Pear SE. 37.0' 12" Cherry N 63.73'
 3
 8" Cherry N 60°W 48.5' Post South 34.7'
 12" Cherry N 18°W 22.2'
 8" Cherry N 30°E 22.4'
 Iron Stone - 8" Cherry N 20°E. 36.3 (over)
 8" Cherry N 50°E. 61.7'
 4
 8" Pear S. 20°W. 72.6'
 4" Sweet Cherry 56.0°W 45.7'

5
 6
 7
 8
 9
 10
 11
 12
 13
 14
 15
 16
 17
 18
 19
 20
 21
 22
 23
 24
 25

TSS, R17W