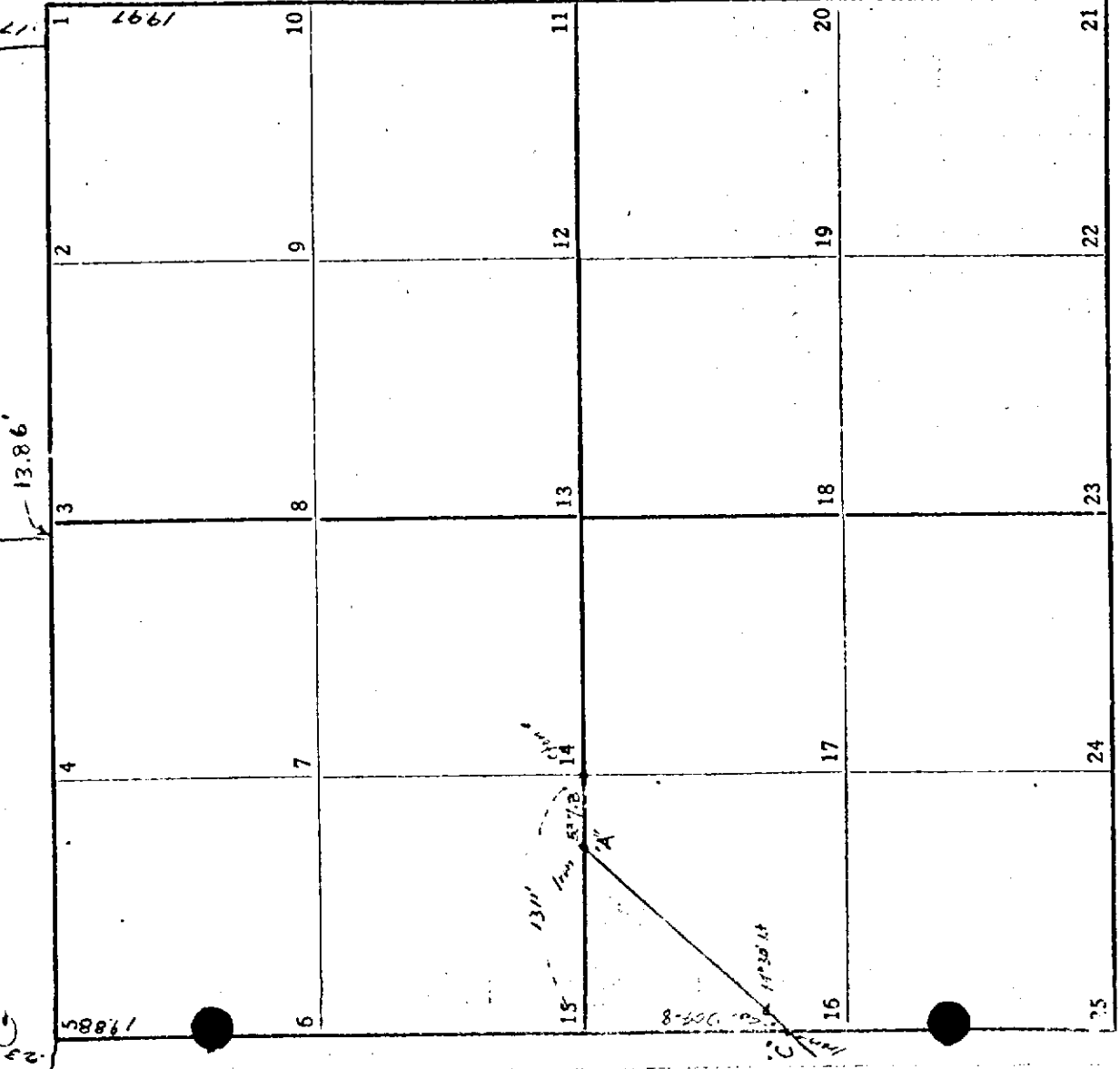


Corrected to Jan 1940
" " Dec. 1954
" " Jan. 1960

SEC. 6 T. 5 S., R. 17 W.



Cor. Post
15 G-2

24" Maple SE 43'
30" SW 89.7'
Stone for Painbridge is 112'

I-1

1
2
3
4
5
6
7
8
9
10
11
12
13
14
15
16
17
18
19
20
21
22
23
24
25

Cor. IS 15' OF E OF ROAD
" " 24' WOI APPLE ROW.

I-3 21

Stone-20" Maple SW 88.5'
24" " SW 83.5'
30" " NW 34'
30" " NE 55.5'
Sec 15 for sec 2 also

I-2

1
2
3
4
5
6
7
8
9
10
11
12
13
14
15
16
17
18
19
20
21
22
23
24
25

3 Stone - 6" Elm N.W. 10'
in N+S fence line
Iron Pipe -
Cor. Fence Post E. 51.0'
A Fence N 2.5'
10" Ash S 75 E 60.7'

13
Stone 18" Walnut S 33 W 76.3'
14 - Elm - 500' - (OVER)
24" Maple S 60 W 80.22'
24" Maple S 75 W 89.7'

1
2
3
4
5
6
7
8
9
10
11
12
13
14
15
16
17
18
19
20
21
22
23
24
25

Iron - 16" Elm N 35 E 20.9
6" Ash S 35 E 35.6
8" Twin Elm S 80 E 28.0
6" Pear S 80 W 43.1

13
Stone 18" Walnut S 33 W 76.3'
14 - Elm - 500' - (OVER)
24" Maple S 60 W 80.22'
24" Maple S 75 W 89.7'

1
2
3
4
5
6
7
8
9
10
11
12
13
14
15
16
17
18
19
20
21
22
23
24
25

T 5 S, R 17 W