

**LAND CORNER RECORDATION CERTIFICATE**  
**Filing Requirement of Act 74, Mich. P.A. 1970**

For corners in

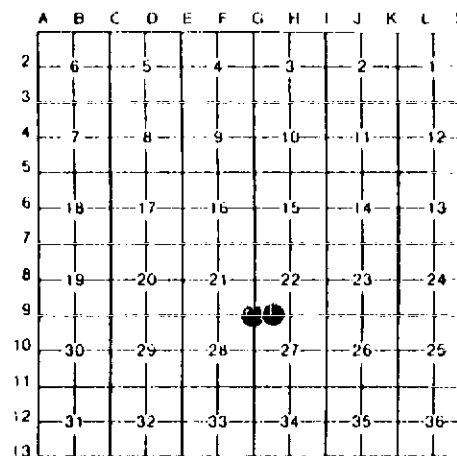
Berrien <small>County</small>	Located In:	Corner Code //
1. Public Land Survey	T 55 R 18W	G9
	T 55 R 18W	MC E. OF G9
	T R	
	T R	
2. Property Controlling in Section	S T R	
	S T R	
3. Miscellaneous Property in Sec.	S T R	
	S T R	

Register of Deeds Stamp & File Number

4. Lot No. \_\_\_\_\_, Recorded Plat \_\_\_\_\_  
 5. Private Claims \_\_\_\_\_

I, Gary C. Bilow, in a field survey on May 14, 1991, 19\_\_\_\_ do hereby certify that under requirements of P.A. 74, Michigan P.A. of 1970, the corner points mentioned in lines 1 and 2 above were in conformance with regulations and rules therefore as required in the current manual of survey instructions of the United States Department of the Interior, Bureau of Land Management or by a decree of a Court of Law and/or that the corner points mentioned in lines 3, 4 and 5 above were in conformance with the rules of the Michigan Board of Land Surveyors or by a Decree of a Court of Law, established, re-established, monumented, re-monumented, recovered, found as expressed below:

**NOTE: Not more than 4 corners, all in the same town and range, may be recorded on this certificate.**



**A. Description of original monument and accessories and/or subsequent restoration:**

G9: Post established by U.S. Government Deputy Surveyor L. Lyon in 1829 - accessories: Beech 7, 51E 40 links & Beech 11 N38W 30 links Survey records obtained from Wightman and Associates, Inc. reference the corner in Books 7 and 134 in 1948, 1954, and in 1960 a "pipe is called for. In 1961 on a survey drawing performed by Alton Howard (obtained from Wightman & Assoc., Inc.) indicates an iron at this corner.  
 MC: Corner established by U.S. Government Deputy Surveyor L. Lyon in 1829 - corner was a White Oak 15 inches in diameter.

**B. Description of corner evidence found and/or method applied in restoring or reestablishing corner:**

G9: Found iron pipe with metal fence post type cap. Distances to adjacent corners consistent and reasonable upon comparison. No witnesses were recovered. Accepted iron as the best evidence of the original GLO corner.  
 MC: Corner reestablished by projecting a line from corner F9 through corner G9 and then prorating the GLO distance to the measured distances between the different section corners.

**C. Description of monument for corner and accessories established to perpetuate locating the position of the corner:**

G9: Found Iron pipe with fence post type cap	MC: Set 1/2" x 36" rebar encased in a 4" diameter concrete cylinder and capped with a cast aluminum Michigan Department of Natural Resources Tablet
S23E 5.62', N&T in 13" Hackberry	S80E 13.38', N&T in 7" Maple
S86E 3.64', N&T in Railroad Tie Post	S53W 9.28', N&T in 16" Hackberry
N48E 81.36', N&T in 18" Walnut	S81W 20.85', N&T in 29" Oak
N38W 102.82', N&T in 8" Elm	N80W 28.88', N&T in Twin 18" Hackberry



Signed by Gary C. Bilow Date 3/31/92  
 Surveyor's Michigan License No. 26453