

LAND CORNER RECORDATION CERTIFICATE
Filing Requirement of Act 74, Mich. P.A. 1970

For corners in

Berrien

(County)

Located In:

Corner Code //

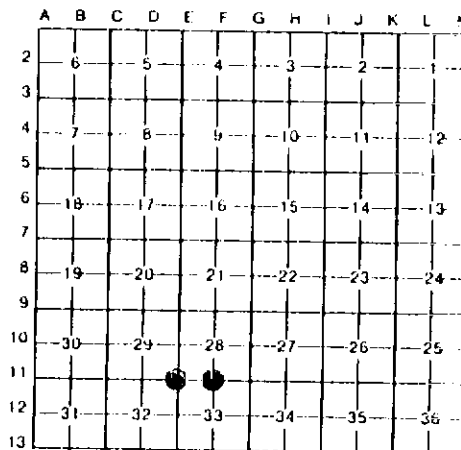
1. Public Land Survey	T	55	R	18W	E11
	T	55	R	18W	F11
	T		R		
	T		R		
2. Property Controlling in Section	S	T		R	
	S	T		R	
3. Miscellaneous Property in Sec.	S	T		R	
	S	T		R	

Register of Deeds Stamp & File Number

4. Lot No. _____, Recorded Plat _____
 5. Private Claims _____

I, **Gary C. Bilow**, in a field survey on May 15, 1991, 19____, do hereby certify that under requirements of P.A. 74, Michigan P.A. of 1970, the corner points mentioned in lines 1 and 2 above were in conformance with regulations and rules therefore as required in the current manual of survey instructions of the United States Department of the Interior, Bureau of Land Management or by a decree of a Court of Law and/or that the corner points mentioned in lines 3, 4 and 5 above were in conformance with the rules of the Michigan Board of Land Surveyors or by a Decree of a Court of Law; established, re-established, monumented, re-monumented, recovered, found as expressed below:

NOTE: Not more than 4 corners, all in the same town and range, may be recorded on this certificate.



A. Description of original monument and accessories and/or subsequent restoration.

E11: Post established by U.S. Government Deputy Surveyor L. Lyon in 1829 - accessories: Beech 16, N67E 30 links & Beech 11, N21-1/2W 27 links. Survey records obtained from Wightman and Associates, Inc. reference the corner in Books 7 and 134 in 1948, 1954, and 1960. In 1960 a "plug" was recovered - accessories: Telephone Post South 29.3'.8" Pear N75W 39.2'.8" Pear S75E 46.9'. E.R. Stefan, LLS #13599, recorded corner under Act 74, PA 1970 in Liber 2, Page 449.

F11: Post established by U.S. Government Deputy Surveyor L. Lyon in 1829- accessories: Aspen 12 S37E 91 links, Aspen 10 S36W 100 links Survey records obtained from Wightman and Associates, Inc. reference the corner in Books 7 and 134 in 1948, 1954, and 1960 as Monument Box- accessories: Irons North & South 33.0'. V.J. Strebs, LLS #26469, recorded corner under Act 74, PA 1970 in Liber 2, Page 350.

B. Description of corner evidence found and/or method applied in restoring or reestablishing corner:

E11: Found 3/4" iron in Monument Box. No accessories were recovered. Accepted iron as best evidence of the original GLO corner.
F11: Found 1/2" iron Bar in Monument Box. No accessories were recovered. Accepted iron as best evidence of the original GLO corner.

C. Description of monument for corner and accessories established to perpetuate locating the position of the corner.

E11: Found 3/4" iron in Monument Box.	F11: Found 1/2" iron in Monument box
S64W 53.40', N&T in Power Pole	N35E 42.76', N&T in 18" Oak
S30W 86.14', N&T in Power Pole	N64E 61.48', N&T in 10" Cherry
South 37.92', N&T in 3" Poplar	S41W 40.08', N&T in Power Pole
North 43.29', N&T in 3" Elm	S8E 39.5', Top of Telephone Box



Signed by Gary C. Bilow
 Surveyor's Michigan License No. 26453

Date 3/31/92