

LAND CORNER RECORDATION CERTIFICATE
Filing Requirement of Act 74, Mich. P.A. 1970

For corners in

Berrien

(County)

Located In:

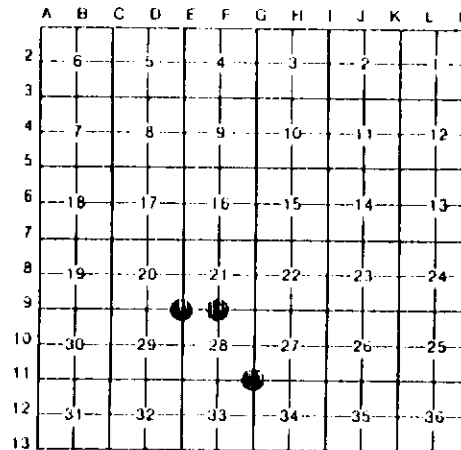
Corner Code //

- | | | | | | |
|---------------------------------------|---|----|---|-----|-----|
| 1. Public Land Survey | T | SS | R | 18W | E9 |
| | T | SS | R | 18W | G11 |
| | T | SS | R | 18W | F9 |
| | T | | R | | |
| 2. Property Controlling in Section | S | T | R | | |
| | S | T | R | | |
| 3. Miscellaneous Property in Sec. | S | T | R | | |
| | S | T | R | | |
| 4. Lot No. _____, Recorded Plat _____ | | | | | |
| 5. Private Claims _____ | | | | | |

Register of Deeds Stamp & File Number

I, **Gary C. Bilow**, in a field survey on **May 21, 1991**, 19____, do hereby certify that under requirements of P.A. 74, Michigan P.A. of 1970, the corner points mentioned in lines 1 and 2 above were in conformance with regulations and rules theretofore as required in the current manual of survey instructions of the United States Department of the Interior, Bureau of Land Management or by a decree of a Court of Law and/or that the corner points mentioned in lines 3, 4 and 5 above were in conformance with the rules of the Michigan Board of Land Surveyors or by a Decree of a Court of Law, established, re-established, monumented, re-monumented, recovered, found as expressed below.

NOTE: Not more than 4 corners, all in the same town and range, may be recorded on this certificate.



A. Description of original monument and accessories and/or subsequent restoration:

E9: Post established by U.S. Government Deputy Surveyor L. Lyon in 1829 - accessories: Beech 7, S11E 40 links & Beech 11, N36W 30 links. Survey records obtained from Wightman and Associates, Inc. reference the corner in 1948, 1954, and 1960. In 1960 a "Stone in a Monument Box" is noted in Books 7 and 134 - accessories: Maple 12, S15W 94.3'; Elec. Pole, SW 55.0'; Elm 24, S70W 107.1'. Corner recorded under Act 74, PA 1970 by M.R. Rushlow, LLS #15191, in Liber 2, Page 295.

G11: Post established by U.S. Government Deputy Surveyor L. Lyon in 1829 - accessories: Red Oak 18, S16E 62 links & Beech 8, N41E 38 links. Survey records obtained from Wightman & Associates, Inc. reference the corner in Books 7 and 134 in 1948, 1954, and 1960. In 1960 a "Stone and Iron" were referenced. Corner recorded under Act 74, PA 1970 by V. J. Streus, LLS #26469, in Liber 2, Page 350.

F9: Post established by U.S. Government Deputy Surveyor L. Lyon in 1829 - accessories: Beech 28, N40E 29 links & Lynn (Basswood) 20, S45E 24 links. Survey records obtained from Wightman & Associates, Inc. reference this corner in 1948, 1954, and 1960 in Books 7 & 134 as a "stone" - accessories: Beech, Southeast 13' & Beech, Northeast 25'.

B. Description of corner evidence found and/or method applied in restoring or reestablishing corner.

E9: Found a Railroad Spike - using metal locator outlined Monument Box under asphalt. No accessories were recovered. From Wightman notes - distances to adjacent corners were reasonable and consistent. Accepted Railroad Spike as the best evidence of the original GLO corner.

G11: Found Iron pipe and Stone - recovered two (2) witnesses. Accepted iron and stone as the best evidence of the original GLO corner.

F9: Found stone. Recovered no accessories. Distances to adjacent section corners was reasonable and consistent with survey records. Accepted stone as the best evidence of the original GLO corner.

C. Description of monument for corner and accessories established to perpetuate locating the position of the corner:

- | | | |
|--|---|--|
| E9: Found Railroad Spike | G11: Found 1/2" Iron pipe & Stone | F9: Found stone - Replaced with 1/2" x 3/8" rebar encased in 4" concrete cylinder and capped with Michigan Department of Natural Resources Tablet |
| S67E 72.89', N&T in Power Pole | S64W 9.13', Southeast corner concrete foundation | N19E 9.09', PK in 14" Beech |
| S76W 112.46', N&T in Power Pole | N38W 15.21', Northeast corner concrete foundation | S48E 14.25', PK in 14" Beech |
| S36E 40.48', N&T in Top center Railroad Tie Fence Post | S18E 1.36', N&T in Fence Post | S27E 14.05', N&T in 11" Beech |
| N25W 52.71', PK & Tag in Railroad Tie Fence Post | N3E 8.73', N&T in Fence Post | N20W 3.56', PK in 14" Maple |
| | | East 1.29', N&T in 2" Pipe |

Signed by

Gary C. Bilow

Date

3/31/92

Surveyor's Michigan License No.

26453

FORM APPROVED BY MICHIGAN STATE BOARD OF LAND SURVEYORS, JAN 28, 1971

REVISED, MAY 14, 1975

REVISED, JAN., 1983