

RECORDATION

RECORDED

MAY 20 1997

CLASSIFIED BY THE BERRIEN COUNTY SURVEY PEER GROUP AS THE OFFICIAL CORNER UNDER MICHIGAN PUBLIC ACT 345 OF 1990

REMONUMENTATION COMMISSION LAND CORNER RECORDATION CERTIFICATE Filing Requirement of Act 74, Mich. P.A. 1970

Dec 26 11 46 AM '96

Berrien & Freshwater REGISTER OF DEEDS BERRIEN COUNTY MICHIGAN

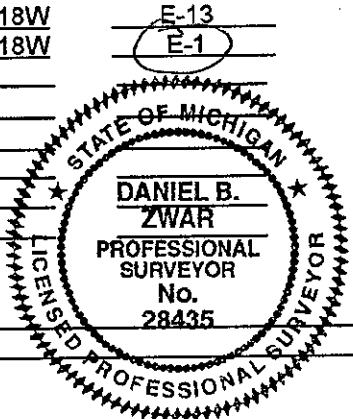
For corners in

COMMON CORNER - NO JOG Located In: Corner Code #

BERRIEN (County)

SW corner, Section 33 - Benton Township & NW corner, Section 4 - Sodus Township

- 1. Public Land Survey T 4S R 18W E-13 T 5S R 18W E-1 T R T R S T R S T R S T R
2. Property Controlling in Section
3. Miscellaneous Property in Sec.
4. Lot No. , Recorded Plat
5. Private Claims



12/26/96 111#9870 A99 CORNER \$9.00 12/26/96 111#9870 A99 Register of Deeds STATE REVENUE FEE \$2.00 Stamp & File Number

Grid table with columns A-M and rows 1-13. Markers are present at (F, 1) and (F, 13).

I, DANIEL B. ZWAR, in a field survey on NOVEMBER 19, 1996, do hereby state that under requirements of P.A. 74, Michigan P.A. of 1970, the corner points mentioned in lines 1 and 2 above were in conformance with regulations and rules therefore as required in the current manual of survey instructions of the United States Department of the Interior, Bureau of Land Management or by a decree of a Court of Law and for that the corner points mentioned in lines 3, 4 and 5 above were in conformance with the rules of the Michigan Board of Land Surveyors or by a Decree of a Court of Law; established, re-established, monumented, recovered, found as expressed below:

NOTE: Not more than 2 corners, all in the same town and range, may be recorded on this certificate.

A. Description of original monument and accessories and/or subsequent restoration:

- 1830 - JOHN MULLET, D.S.; BOOK 1, PAGE 358; WEST ON SOUTH BOUNDARY OF SECTION 33 - 40.00 CHAINS; SET POST 1/4 SECTION CORNER - 80.00 CHAINS; SET POST; CORNER TO SECTION 32 & 33; 6" W. OAK N 81-1/2 E 52 LINKS; 26" W. OAK N 14 W 30 LINKS
1830 - LUCIUS LYON, D.S.; BOOK 1, PAGE 410, 419 & 441; FROM SW CORN SEC 4 RAN NORTH BETWEEN SEC. 4 & 5; 21.18 CHAINS TO RIVER & QUIT; THEN RAN SOUTH BETWEEN SECTIONS 4 & 5; 40.00 - SET POST 1/4 SECTION CORNER; 56.79 - TO N SIDE OF RIVER - FELL 5.88 CHAINS WEST OF CORNER ON OPPOSITE SIDE - QUIT @ RIVER; G.L.O. MAP INDICATES HE RAN SOUTH FROM THE SW CORNER OF SECTION 33 - 4 - 18. THIS BEING THE CASE, THERE WOULD BE NO JOG & SAME WITNESSES WOULD APPLY 6" W. OAK N 81-1/2 E 52 LKS.; 26" W. OAK N 14 E 30 LKS.; ORIGINAL WITNESS GONE
1934 - J. DEWEY; SHOWS CORNER @ INTERSECTION - TOWNLINE & PIPESTONE RD.
1940 - J. DEWEY; SPIKE; JUDICATES COMMON CORNER 32 & 33 - 4 - 18 AND SEC. 5 - 5 - 18.
1975 - R. GARRETT; 3/4" IRON ROD; POWER POLE N45°W 45.65'; TELE POLE N40°E 41.79'; POWER POLE S45°W 48.49'
1978 - M. RUSHLOW; 3/4" IRON ROD IN MON BOX; POWER POLE N45°W 45.65'; TELE POLE N40°E 41.79'; POWER POLE S45°W 48.49'
1979 - M. RUSHLOW; 3/4" IRON ROD IN MON BOX; POWER POLE N45°W 45.65'; TELE POLE N40°E 41.79'; POWER POLE S45°W 48.49'
1981 - J. KAMER; 3/4" IRON ROD IN MON BOX; POWER POLE N45°W 45.65'; TELE POLE N40°E 41.79'; POWER POLE S45°W 48.49'
1981 - J. KAMER; 3/4" IRON ROD IN MON BOX; POWER POLE N45°W 45.65'; TELE POLE N40°E 41.79'; POWER POLE S45°W 48.49'
1984 - J. KAMER; 3/4" IRON ROD IN MON BOX; POWER POLE N45°W 45.65'; TELE POLE N40°E 41.79'; POWER POLE S45°W 48.49'

(CONTINUED ON BACK)

B. Description of corner evidence found and/or method applied in restoring or reestablishing corner:

FOUND 3/4 IRON ROD IN MON BOX. STRADDLED ROD & REMOVED. EXCAVATED TO 36" BUT FOUND NOTHING ELSE. THIS LOCATION FOR BOTH CORNERS IS ACCEPTED AS THE BEST AVAILABLE EVIDENCE OF THE POSITION OF THE ORIGINAL CORNER.

C. Description of monument for corner and accessories established to perpetuate locating the position of the corner:

PLACED STANDARD 36" X 1" IRON PIPE W/ B.C.R.P. BRASS CAP IN MON. BOX TO STRADDLES OF ROD. WITNESSES: GUY POLE S 40° W 65.48'; NAIL W/ TAG IN P. POLE #234-370 N 35° E 67.22'; NAIL W/ TAG IN P. POLE #234-159 N 75° E 92.09'; CENTERLINE MH COVER N 75° W 45.38'.

Signed by Daniel B Zwar Surveyor's Michigan License No. 28435

Date Dec 18, 1996

- 1985 - J. KAMER; 3/4" IRON ROD IN MON BOX; POWER POLE N45°W 45.65'; TELE POLE N40°E 41.79'; POWER POLE S45°W 48.49'
1986 - J. KAMER; 3/4" IRON ROD IN MON BOX; POWER POLE N45°W 45.65'; TELE POLE N40°E 41.79'; POWER POLE S45°W 48.49'
1986 - J. KAMER; 3/4" IRON ROD IN MON BOX; POWER POLE N45°W 45.65'; TELE POLE N40°E 41.79'; POWER POLE S45°W 48.49'
1987 - J. KAMER; 3/4" IRON ROD IN MON BOX; POWER POLE N45°W 45.65'; TELE POLE N40°E 41.79'; POWER POLE S45°W 48.49'
1987 - J. KAMER; USED; NONE
1988 - V. J. STREBS; 3/4" IRON ROD IN MON BOX; POWER POLE N45°W 45.65'; TELE POLE N40°E 41.79'; POWER POLE S45°W 48.49'
1989 - 1990 - INTERSECTION REBUILT - WIPING OUT ALL OLD WITNESSES
1994 - J. KAMER; 3/4" IRON ROD IN MON BOX; POWER POLE N45°W 45.65'; TELE POLE N40°E 41.79'; POWER POLE S45°W 48.49'
1995 - D. ZWAR; 3/4" IRON ROD IN MON BOX
1922 - E. NOE; 6" MAPLE NW 38.4'; 6" MAPLE NE 39.7'; 6" MAPLE SE 39.6'; W 1/4 POST S 2639'; SHOWN @ INTERSECTION - PIPESTONE & TOWNLINE RDS.
1939 - J. DEWEY ? OR HOLLOWAY; SHOWN @ INTERSECTION - PIPESTONE & TOWNLINE RDS.; E 1/4 POST SOUTH 2639'
1948 - 1960 - B.C.R.C.; SPIKE; 14" MAPLE NW 39.0'; 18" MAPLE N 50 E 38.6'; NE COR CONC HDWL N 40 W 34.7'; SE COR CONC HDWL SE 28.2'; SE COR CONC HDWL S 40 W 33.9'; ALSO SHOWS A MEASUREMENT SOUTH 990.7' TO AN IRON SHOWN IN E. NOE (1922) AS BEING 989.62'
1975 - M. RUSHLOW; 1/2" IRON ROD IN MON BOX; P. POLE N 45° E 41.81'; P. POLE N 45° W 45.48'; P. POLE S 45° W 48.48'

SURVEY &
REMONUMENTATION

MAY 20 1997

COMMISSION

LIBER

3 PAGE 412