

RATIFIED BY THE BERRIEN COUNTY SURVEY PEER GROUP AS THE OFFICIAL CORNER UNDER MICHIGAN PUBLIC ACT 345 OF 1990

RECORDED

Berrien County Remonumentation
LAND CORNER RECORDATION CERTIFICATE
 Filing Requirement of Act 74, Mich. P.A. 1970

99 NOV 17 PM 1:38

BERNICE TRETHERWAY
 REGISTER OF DEEDS
 BERRIEN COUNTY, MICHIGAN

7-27-99
 For corners in
Berrien
 (County)

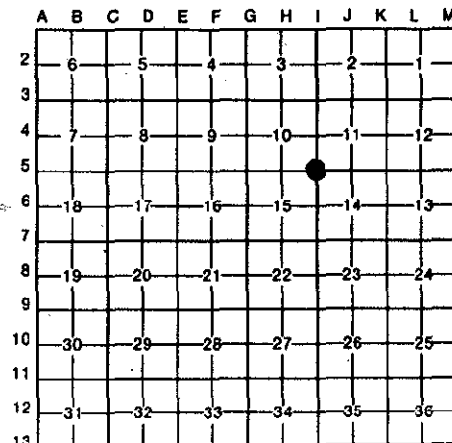
Located In: Corner Code #

- | | | | | | | | |
|------------------------------------|---|---|---|---|----|---|-------------|
| 1. Public Land Survey | T | 5 | S | R | 19 | W | I-5 |
| | T | | R | | | | |
| | T | | R | | | | SURVEY 2 |
| | T | | R | | | | |
| 2. Property Controlling in Section | S | | T | | R | | |
| | S | | T | | R | | |
| 3. Miscellaneous Property in Sec. | S | | T | | R | | DEC 28 1999 |
| | S | | T | | R | | |

11/17/99 111#B178 A77
 11/17/99 CORNER 111#B178 \$11.00 A77
 Register of Deeds STATE & REMONUMENT #2.00

SECTION

4. Lot No. _____, Recorded Plat _____
 5. Private Claims _____



I, Charles W. Barger, in a field survey on November 5, 19 99, do hereby certify that under requirements of P.A. 74, Michigan P.A. of 1970, the corner points mentioned in lines 1 and 2 above were in conformance with regulations and rules therefore as required in the current manual of survey instructions of the United States Department of the Interior, Bureau of Land Management or by a decree of a Court of Law and/or that the corner points mentioned in lines 3, 4 and 5 above were in conformance with the rules of the Michigan Board of Land Surveyors or by a Decree of a Court of Law; established, re-established, monumented, re-monumented, recovered, found as expressed below:

NOTE: Not more than 4 corners, all in the same town and range, may be recorded on this certificate.

A. Description of original monument and accessories and/or subsequent restoration:

L. Lyons	Set Corner
Feb 1830	W. Oak 13 N69-1/2W 16
	Pine 30 N47E 31

B. Description of corner evidence found and/or method applied in restoring or reestablishing corner:

C. Barger	Found 1/2" iron in Mon Box
July 1999	PK in PP S43degE 40.06'
	PK in PP S60degW 58.7'
	PK in PP N40degW 78.92'
	PK in PP N30degE 53.98'
	Top of Hydrant N43degW 57.22'

C. Description of monument for corner and accessories established to perpetuate locating the position of the corner:

I-5 1" pipe 36" long with 2 1/2" Remonumentation Brass Cap in Monument Box
 Set Witness Tag in PP S43degE 40.06'
 Top of Hydrant N43degW 57.22'
 Center of Phone Manhole N46degE 36.93'
 Center of Sanitary Manhole S48degW 41.91'

And is accepted as a careful and faithful perpetuation of the position of the original corner.



Signed by Charles W. Barger P.S.
 Surveyor's Michigan License No. 31589

Date November 9, 1999

SOUTHEAST CORNER SECTION 10, TOWNSHIP 5 SOUTH, RANGE 19 WEST
 SOUTHWEST CORNER SECTION 11, TOWNSHIP 5 SOUTH, RANGE 19 WEST
 NORTHWEST CORNER SECTION 14, TOWNSHIP 5 SOUTH, RANGE 19 WEST
 NORTHEAST CORNER SECTION 15, TOWNSHIP 5 SOUTH, RANGE 19 WEST

I-5

L. Lyons
 Feb 1830

Set Corner
 W. Oak 13 N69-1/2W 16
 Pine 30 N47E 31

J. F. Miller
 Oct 1875

Set Stone by Original Witness

W.W. Graves
 May 1890

Found Stone

W. Cleary
 April 1903

Stone
 2639.54 N to E 1/4
 5250.96 W to SW Cor

BCRC
 1940

Found Stone
 8" Maple NW 41.0
 3" Pear NE 43.0
 13" Oak SE 67.4

E.R. Stephan
 Nov 30, 1971

Found 1/2" Iron Bar
 Cen Hydrant N30degW 57.16
 Face PP N30degE 53.50
 Face PP S45degE 39.6

John H. Spencer
 12/15/71

Found 2" Pig Iron Plug
 Hydrant N40degW 57.14'
 TP N30degE 53.95'
 PP S45degE 40.04'
 PP S60degW 57.98'

Neil Berndt
 2/5/72

Found Iron Ball
 Hydrant N45degW 56.9'
 PP S50degW 58.1'
 PP S45degE 39.7'

Robert L. Beland
 11/6/72

Found Plug
 Hydrant N40degW 57.3'
 Elec Pole S50degW 58.1'
 Elec Pole S38degE 39.7'

Wightman & Assoc
 1/18/76

Found Plug
 Hydrant N45degW 56.9'
 PP S50degW 58.1'
 PP S45degE 39.7'

SURVEY &

RF

DEC 28 1999

SECTION

DEC 28 1999

SECTION

Wightman & Assoc 4/19/78	Found Plug Hydrant N45degW 56.9' PP S50degW 58.1' PP S45degE 39.7'
Wightman & Assoc 4/30/79	Found Plug Hydrant N45degW 56.9' PP S50degW 58.1' PP S45degE 39.7'
Wightman & Assoc. 2/5/81	Iron Pipe w/Barger Cap MDSH Tag in SE Face PP S45degE 39.8' Street Sign S60degW 46' Top of Hydrant N43degW 57.25'
Wightman & Assoc. 12/1/82	Found Iron PK in PP S45degE 39.84' PK in PP N45degE 53.89' PK in PP S45degW 58.57'
Barger Engineering 2/1/83	1/2" Capped Rebar Hydrant N53degW 57.25' Tele Pole #0089 N33degE 54' PP B-279-128 S44degE 39.8' PP B-278-102 S62degW 58.55'
Wightman & Assoc 6/23/83	Found Iron PK in PP S45degE 39.84' PK in PP N45degE 53.89' PK in PP S45degW 58.57'
Wightman & Assoc 4/17/84	Found 1/2" Capped Rebar Hydrant N53degW 57.24' Tele Pole #00899 N33degE 53.98' PP B-279-128 S44degE 39.8' PP B-278-102 S62degW 58.55'
Wightman & Assoc 10/9/84	Found 1/2" Capped Rebar Hydrant N53degW 57.24' Tele Pole #0089 53.98' PP B-279-128 S44degE 39.8' PP B-278-102 S62degW 58.55'
James Quist 9/24/91	Found Capped Iron PK in Util Pole S55degW 58.6' PK in Util Pole N40degE 53.8' PK in Util Pole S45degE 39.9' Top of Hydrant N45degW 57.2'
Charles Barger 7/1999	Found 1/2" Iron in Mon Box PK in PP S43degE 40.06'
	PK in PP S60degW 58.7' PK in PP N40degW 78.92' PK in PP N30degE 53.98' Top of Hydrant N43degW 57.22'