

MAINTAINED BY THE BERRIEN COUNTY SURVEY PEER GROUP AS THE OFFICIAL CORNER UNDER MICHIGAN PUBLIC ACT 346 OF 1990

RECORDED

Berrien County Remonumentation
LAND CORNER RECORDATION CERTIFICATE NOV - 1 AM 10:39
 Filing Requirement of Act 74, Mich. P.A. 1970

BENNICIE TRETHERWAY
 REGISTER OF DEEDS
 BERRIEN COUNTY, MICHIGAN

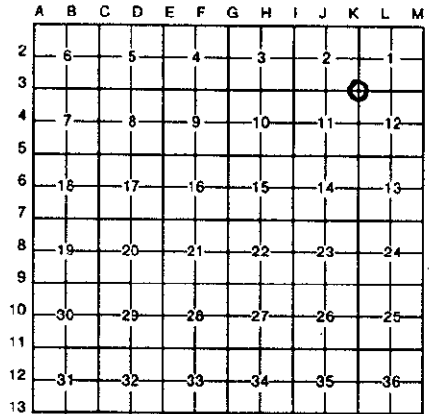
For corners in Berrien (County) Located In: _____ Corner Code # K-3

1. Public Land Survey	T <u>5S</u> R <u>19W</u>	<u>K-3</u>
	T _____ R _____	_____
	T _____ R _____	_____
	T _____ R _____	_____
2. Property Controlling in Section	S _____ T _____ R _____	_____
	S _____ T _____ R _____	_____
3. Miscellaneous Property in Sec.	S _____ T _____ R _____	_____
	S _____ T _____ R _____	_____

4. Lot No. _____, Recorded Plat _____
 5. Private Claims _____

11/01/00 111#5437 A44
 CORNER \$9.00
 11/01/00 111#5437 A44
 Register of Deeds Stamp & File Number STATE REMON. FEE \$2.00

I, Charles W. Barger, in a field survey on September, ~~19~~ 2000, do hereby certify that under requirements of P.A. 74, Michigan P.A. of 1970, the corner points mentioned in lines 1 and 2 above were in conformance with regulations and rules therefore as required in the current manual of survey instructions of the United States Department of the Interior, Bureau of Land Management or by a decree of a Court of Law and/or that the corner points mentioned in lines 3, 4 and 5 above were in conformance with the rules of the Michigan Board of Land Surveyors or by a Decree of a Court of Law; established, re-established, monumented, re-monumented, recovered, found as expressed below:



NOTE: Not more than 4 corners, all in the same town and range, may be recorded on this certificate.

A. Description of original monument and accessories and/or subsequent restoration:

Feb. 1830	Set Post
L. Lyons	B Oak 30 S16 1/2 W 97
	W Oak 15 S11E 84

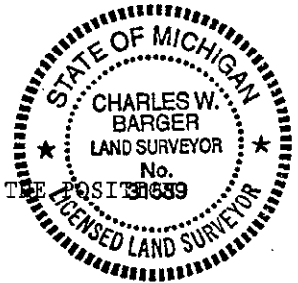
B. Description of corner evidence found and/or method applied in restoring or reestablishing corner:

June 2000	Found 5/8" Iron in Monument Box
C. Barger	PK in PP N18d53'E 84.78'
	PK in PP S85d12"E 36.49'
	PK in PP S48d38'W 32.44'
	PK in PP N68d35'W 85.19'

C. Description of monument for corner and accessories established to perpetuate locating the position of the corner:

K-3 1" Pipe 36" Long with 2 1/2" Remonumentation Brass Cap in Monument Box
 Witness Tag in PP N18d53'E 84.78'
 Witness Tag in PP S85d12"E 36.49'
 Witness Tag in PP S48d38'W 32.44'
 Witness Tag in PP N68d35'W 85.19'

AND IS ACCEPTED AS A CAREFUL AND FAITHFUL PERPETUATION OF THE POSITION OF THE ORIGINAL CORNER.



Signed by Charles W. Barger P.S. Date OCTOBER 26, 2000
 Surveyor License No. 31589
SURVEY & REMONUMENTATION

FORM APPROVED BY MICHIGAN STATE BOARD OF LAND SURVEYORS, JAN. 28, 1971
 REVISED MAY 14, 1975
 REVISED JAN., 1983

JAN 31 2001

LIBER 4 PAGE 230

SECTION

2000 Berrien County Remonumentation
Barger Engineering, Inc.

NORTHEAST CORNER SECTION 11, T5S, R19W
SOUTHEAST CORNER SECTION 2, T5S, R19W
K-3

Feb. 1830 L. Lyons	Set Post B Oak 30 S16 1/2 W 97 W Oak 15 S11E 84
Feb. 1876 T. Love	Stone Maple N44 3/4W 5 1/2 Sugar N89 3/4E 37 3/4
1954 and 1960 Berrien Co. Rd Comm	Plug 18" Maple SW 34.2' 24" Maple NW 48.2' SW Cor School Foundation NE 91.4' Elec Pole S85E 38.7' 18" Maple SE 55.9' 24" Maple S38W 34.9' 24" Maple N25W 49.28' PP S86E 35.65'
July 1973 Unknown	Recorded Corner Liber 1, Page 372 1/2" Iron Rod in Monument Box PP S85E 35.68' 35" Maple S45E 34.83' PP S45W 32.0'
Oct 1987 J. Kamer	Survey - Found 1/2" Iron in Monument Box PP S80E 35.85' PP S45E 31.95' 24" Maple N40E 42.17'
Feb 1993 J. Kamer	Survey Found 1/2" Iron in Monument Box PK in 20" Oak S30E 52.04' PK in Tele Pole N45W 43.68' PK in PP N60E 53.64' Hydt S70W 53.61'
June 2000 C. Barger	Found 5/8" Iron in Monument Box PK in PP N18d53'E 84.78' PK in PP S85d12"E 36.49' PK in PP S48d38"W 32.44' PK in PP N68d35'W 85.19'

Barger Engineering, Inc.
20249.04

SURVEY &
REMONUMENTATION

JAN 31 2001

LIBER 4

PAGE 231

SECTION