

RECORDED

ATTESTED BY THE BERRIEN COUNTY SURVEY PEER GROUP AS THE OFFICIAL CORNER UNDER MICHIGAN PUBLIC ACT 345 OF 1990

BERRIEN COUNTY REMONUMENTATION 98 OCT 27 PM 1:07 LAND CORNER RECORDATION CERTIFICATE Filing Requirement of Act 74, Mich. P.A. 1970

BERNICE TRETHERWAY REGISTER OF DEEDS BERRIEN COUNTY, MICHIGAN

or corners in

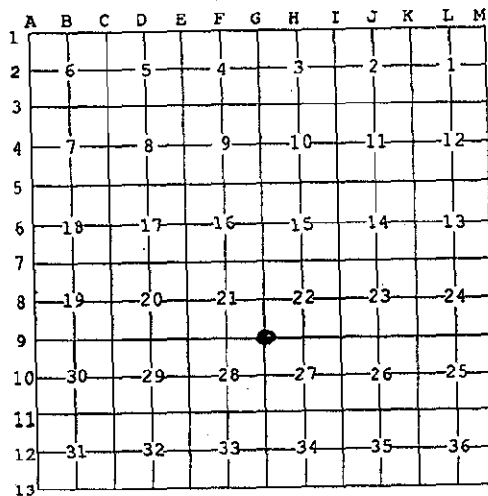
Table with columns: Berrien (County), Located In, Corner Code #. Rows include Public Land Survey, Property Controlling in Section, and Miscellaneous Property in Sec.

10/27/98 111#4092 A44 CORNER \$7.00 10/27/98 111#4092 A44 Register of Deeds Stamp & File Number STATE REMON. FEE \$2.00

1. Lot No. Recorded Plat 5. Private Claims

V. J. Strebs, in a field survey on May 12, 1998 do hereby state that under requirements of P.A. 74, Michigan P.A. of 1970, the corner points mentioned in lines 1 and 2 above were in conformance with regulations and rules therefore as required in the current manual of survey instructions of the United States Department of the Interior, Bureau of Land Management or by a decree of a Court of Law and /or that the corner points mentioned in lines 3, 4 and 5 above were in conformance with the rules of the Michigan Board of Land Surveyors or by a Decree of a Court of Law; established, re-established, monumented, recovered, found as expressed below:

NOTE: Not more than 2 corners, all in the same town and range, may be recorded on this certificate.



1. Description of original monument and accessories and/or subsequent restoration:

- FEB 13, 1830 LUCIUS LYON DS; SOUTH BETWEEN SECTION S21 & 22 MEASURED 51.93 CHAINS TO NORTH BOUNDARY OF INDIANA 11 CHAINS EAST OF 16TH MILE TREE, SET POST, 15" BEECH N28°E 14 LINKS; 8" BEECH N81°W 35 LINKS. SEPT 6, 7, 8 & 9, 1886 ALBERT L. DREW, COUNTY SURVEYOR, STONE WITH SMALL ONES; 14" WALNUT N57°E 118 LINKS (77.88'); 11 CHAINS EAST OF 16TH MILE CORNER (STONE).

3. Description of corner evidence found and/or method applied in restoring or reestablishing corner:

FOUND 1/2" REBAR.

SURVEY & REMONUMENTATION NOV 20 1998 SECTION

2. Description of monument for corner and accessories established to perpetuate locating the position of the corner:

SET 1" X 3 FT IRON PIPE W/B.C.R.P. BRASS CAP IN MONUMENT BOX; WIT TAG IN 14" WALNUT N55°E 75.00'; WIT TAG IN 8" WALNUT N35°E 17.81'; WIT TAG IN 6" WALNUT N50°W 25.32'; WIT TAG IN 12" CHERRY S40°W 26.41'. ACCEPTED AS A CAREFUL AND FAITHFUL PERPETUATION OF THE POSITION OF THE ORIGINAL CORNER.

Signed by Surveyor's Michigan License No. 26469



Date 7-9-98