

SURVEY & MONUMENTATION

JAN 23 1996

**BRANCH COUNTY REMONUMENTATION CORNER
LAND CORNER RECORDATION CERTIFICATE**

Filing Requirement of Act 74, Mich. P.A. 1970

For corners in **COMMISSION**

STATE OF MICHIGAN
Branch County
Recorded

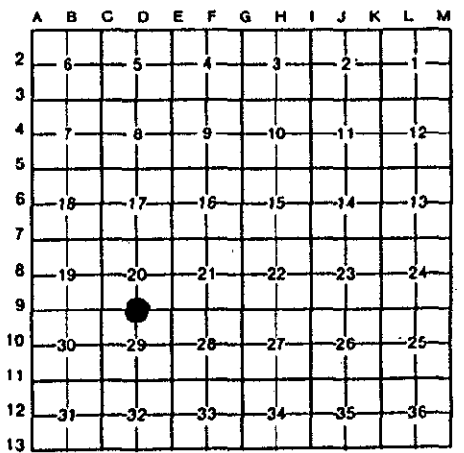
BRANCH (County)	Located In:	Corner Code #
GIRARD TWP	T 5 S R 6W	D-9
1. Public Land Survey	T _____ R _____	_____
	T _____ R _____	_____
	T _____ R _____	_____
2. Property Controlling in Section	S _____ T _____ R _____	_____
	S _____ T _____ R _____	_____
3. Miscellaneous Property in Sec.	S _____ T _____ R _____	_____
	S _____ T _____ R _____	_____

09-28-1995 10:20:38

Linda Lee Morrison-Mathews
REGISTER OF DEEDS
Liber 000003 Page 0026

Register of Deeds Stamp & File Number

- 4. Lot No. _____, Recorded Plat _____
- 5. Private Claims _____



I, Edward W. Reed, in a field survey on June 16, 19 95, do hereby certify that under requirements of P.A. 74, Michigan P.A. of 1970, the corner points mentioned in lines 1 and 2 above were in conformance with regulations and rules therefore as required in the current manual of survey instructions of the United States Department of the Interior, Bureau of Land Management or by a decree of a Court of Law and/or that the corner points mentioned in lines 3, 4 and 5 above were in conformance with the rules of the Michigan Board of Land Surveyors or by a Decree of a Court of Law; established, re-established, monumented, re-monumented, recovered, found as expressed below:

NOTE: Not more than 4 corners, all in the same town and range, may be recorded on this certificate.

- A. Description of original monument and accessories and/or subsequent restoration:
- QUARTER CORNER COMMON TO SECTIONS 20 AND 29, T5S, R6W, GIRARD TWP., BRANCH COUNTY, MI
 - 1825: Robert Clark, Jr., Deputy Surveyor-set corner
 - 1970: E. J. McCombs, Surveyor for Consumers Power Co.,-set railroad spike between section corners
 - 1982: E. R. Reed, County Surveyor,-recorded corner in L.C.R. #II-058, as railroad spike
 - 1990: E. W. Reed-tied survey to railroad spike

B. Description of corner evidence found and/or method applied in restoring or reestablishing corner:

Found railroad spike, removed same
Set 1/2" x 18" rebar iron and remonumentation cap
Set cast iron monument box flush with road surface

ACCEPTED BY THE BRANCH COUNTY SURVEY PEER GROUP AS THE OFFICIAL CORNER UNDER MICHIGAN PUBLIC ACT 345 OF 1990 AT A MEETING HELD ON 9-13-95
E. R. Reed, C. Rep.

C. Description of monument for corner and accessories established to perpetuate locating the position of the corner:

- 2' S of centerline of pavement
- S68°E 73.6'-to near face of power pole
- N63°W 75.8'-to near face of telephone pole and pedestal
- N48°W 45.1'-to center of 36" maple
- N01°E 44.4'-to near face of power pole with transformer
- N 36.1'-to SW corner of square concrete anchor post

And is accepted as a careful and faithful perpetuation of the position of the original corner.



Signed by Edward W. Reed Date June 16, 1995
Surveyor's Michigan License No. 33985