

SURVEY & REMONUMENTATION

MAR 13 1998

SECTION

BRANCH COUNTY REMONUMENTATION CORNER LAND CORNER RECORDATION CERTIFICATE Filing Requirement of Act 74, Mich. P.A. 1970

For corners in

BRANCH Located In: Corner Code #
(County)
GIRARD TWP.
1. Public Land Survey T 5 S R 6 W 1-7
2. Property Controlling in Section S T R
3. Miscellaneous Property in Sec. S T R

STATE OF MICHIGAN Branch County Recorded

10-22-1997 09:56:44

Linda Lee Morrison-Mathews REGISTER OF DEEDS

Liber 00003 Page 0165

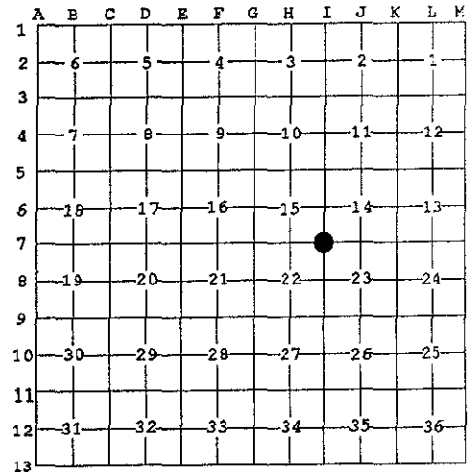
Register of Deeds Stamp & File Number

4. Lot No. , Recorded Plat
5. Private Claims

I, EDWARD W. REED, in a field survey on SEPTEMBER 3, 1997 do hereby state that under requirements of P.A. 74, Michigan P.A. of 1970, the corner points mentioned in lines 1 and 2 above were in conformance with regulations and rules therefore as required in the current manual of survey instructions of the United States Department of the Interior, Bureau of Land Management or by a decree of a Court of Law and /or that the corner points mentioned in lines 3, 4 and 5 above were in conformance with the rules of the Michigan Board of Land Surveyors or by a Decree of a Court of Law; established, re-established, monumented, recovered, found as expressed below:

NOTE: Not more than 2 corners, all in the same town and range, may be recorded on this certificate.

A. Description of original monument and accessories and/or subsequent restoration:
1825: R. CLARK, jr., DEPT. SURVEYOR - CORNER SET
1963: M. WALTER, MICH. STATE HIGHWAY DEPT, SURVEY CHIEF - 1 1/2" SQUARE IRON, RECORDED IN HIGHWAY RECORDS
1974: E.R. REED, CO. SURVEYOR - FOUND 1 1/2" SQUARE IRON FROM MSHD WITNESSES, RECORDED IN LCRC # 0125



ACCEPTED BY THE BRANCH COUNTY SURVEY PEER GROUP AS THE OFFICIAL CORNER UNDER MICHIGAN PUBLIC ACT 345 OF 1990 AT A MEETING HELD ON 9-10-97

E.R. Reed, P.S. Co. Rep.
E.R. REED

B. Description of corner evidence found and/or method applied in restoring or reestablishing corner:

FOUND 1 1/2" SQUARE IRON FROM WITNESS OF LCRC # 0125

C. Description of monument for corner and accessories established to perpetuate locating the position of the corner:

SET 1/2" X 18" REBAR IRON WITH REMON CAP IN CI-MONUMENT BOX FLUSH WITH ROAD SURFACE

3" IRON FENCE POST, SOUTH 31.4' TO FACE
19" WALNUT, NORTH 36.9' TO CENTER
36" COTTONWOOD, S40E 42.5' TO CENTER
SW CORNER OF MOBILE HOME, N18E 92.90'
IN LINE WITH FENCE RUNNING NORTH

AND IS ACCEPTED AS A CAREFUL AND FAITHFUL PERPETUATION OF THE POSITION OF THE ORIGINAL CORNER

Signed by Edward W. Reed
EDWARD W. REED

Date SEPTEMBER 3, 1997

Surveyor's Michigan License No. 33985

