

SURVEY & REMONUMENTATION

MAR 13 1998

SECTION

BRANCH COUNTY REMONUMENTATION CORNER
LAND CORNER RECORDATION CERTIFICATE
Filing Requirement of Act 74, Mich. P.A. 1970

For corners in

BRANCH (County)	Located In:	Corner Code #
UNION TOWNSHIP		
1. Public Land Survey	T 5 S R 7 W	A - 03
	T _____ R _____	_____
	T _____ R _____	_____
	T _____ R _____	_____
2. Property Controlling in Section	S _____ T _____ R _____	_____
	S _____ T _____ R _____	_____
3. Miscellaneous Property in Sec.	S _____ T _____ R _____	_____
	S _____ T _____ R _____	_____

STATE OF MICHIGAN
Branch County
Recorded

10-22-1997 09:58:33

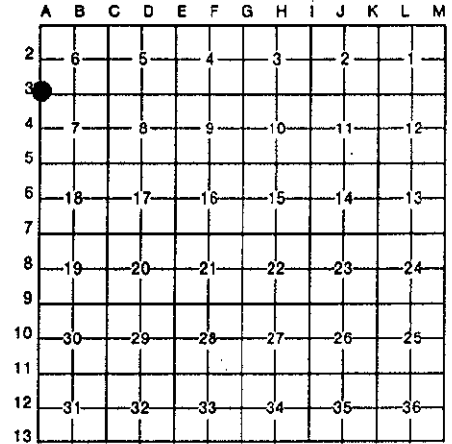
Linda Lee Morrison-Mathews
REGISTER OF DEEDS

Liber 00003 Page 0180

Register of Deeds Stamp & File Number

- 4. Lot No. _____, Recorded Plat _____
- 5. Private Claims _____

I, EDWARD R. REED, P.S. in a field survey on JULY 22, 19 97, do hereby certify that under requirements of P.A. 74, Michigan P.A. of 1970, the corner points mentioned in lines 1 and 2 above were in conformance with regulations and rules therefore as required in the current manual of survey instructions of the United States Department of the Interior; Bureau of Land Management or by a decree of a Court of Law and/or that the corner points mentioned in lines 3, 4 and 5 above were in conformance with the rules of the Michigan Board of Land Surveyors or by a Decree of a Court of Law; established, re-established, monumented, re-monumented, recovered, found as expressed below:



NOTE: Not more than 4 corners, all in the same town and range, may be recorded on this certificate.

A. Description of original monument and accessories and/or subsequent restoration:

G.L.O. FIELDNOTES: R. CLARK, D.S. 1826 = "75.83 INTERSECTED W BOUNDARY 95 LKS S OF POST. SET POST AT INTERSECTION COR. SECS. 6 & 7. W OAK 18 IN N8½E 39, W OAK 18 IN S71E 22½"

M. KNOWLES, DEP. CO. SURVEYOR, 1875: "(V) - . S. OF U .95 AS BY US SURVEY"

J. H. BENNETT, 1889: "S.W. SEC. CORNER. LONG IRON BOLT WITH SQUARE HEAD. 95 L SOUTH OF SHERWOOD COR."

E.R. REED, RLS, 1957: FD. IRON @ SECTION COR."

"BREEZY BLUFF" AND "BREEZY ACRES" PLATS & VARIOUS SURVEYS ARE REFERENCED TO THIS CORNER.

B. Description of corner evidence found and/or method applied in restoring or reestablishing corner:

FOUND 1¼" IRON PIPE AT CORNER PREVIOUSLY FOUND ON PLAT SURVEYS MENTIONED ABOVE; AND AT APPROXIMATE G.L.O. DISTANCE OF 95 LINKS SOUTH FROM CORNER TO SHERWOOD TOWNSHIP

PLACED AND CEMENTED A 1/2" x 18" STEEL REBAR ROD IN PIPE, AND SET A BRANCH COUNTY REMONUMENTATION CAP ON REBAR ROD. SET A C-I MONUMENT BOX OVER PIPE, ROD AND CAP. TOP OF MONUMENT BOX IS ABOUT 1" BELOW GROUND SURFACE.

AND IS ACCEPTED AS A CAREFUL AND FAITHFUL PERPETUATION OF THE POSITION OF THE ORIGINAL CORNER.

C. Description of monument for corner and accessories established to perpetuate locating the position of the corner:

1/2" x 18" STEEL REBAR ROD CEMENTED IN 1¼" PIPE, WITH A BRANCH COUNTY REMONUMENTATION CAP ON REBAR ROD. IN A C-I MONUMENT BOX:

SOUTH 26.55' - NAIL, W. SIDE 24" TWIN CHERRY.

N 40 W 61.00' - NEAR FACE OF P. POLE.

N 50 E 69.90' - NAIL NW SIDE 24" ELM.

S 70 E 70.30' - NW CORNER SHED (BARN TYPE ROOF).

N 20 W 70.50' - NE CORNER RECTANGULAR TEL. PEDESTAL.

NORTH 62.7' - SECTION CORNER 1/12, UNION TOWNSHIP.

ACCEPTED BY THE BRANCH COUNTY SURVEY PEER GROUP AS THE OFFICIAL CORNER UNDER MICHIGAN PUBLIC ACT 345 OF 1990 AT A MEETING HELD ON

9-10-97

E.R. Reed, Co. Rep.
E. R. REED

Signed by Edward R. Reed
EDWARD R. REED, P.S.

Surveyor's Michigan License No. 7437



Date JULY 22, 1997