

SURVEY & REMONUMENTATION

MAR 13 1998

SECTION

**BRANCH COUNTY REMONUMENTATION CORNER
LAND CORNER RECORDATION CERTIFICATE
Filing Requirement of Act 74, Mich. P.A. 1970**

For corners in

<u>BRANCH COUNTY</u> UNION TWP.	Located In:	Corner Code #
1. Public Land Survey	<u>T 5 S R 7 W</u>	<u>C-7</u>
	T <u> </u> R <u> </u>	<u> </u>
	T <u> </u> R <u> </u>	<u> </u>
	T <u> </u> R <u> </u>	<u> </u>
2. Property Controlling in Section	S <u> </u> T <u> </u> R <u> </u>	<u> </u>
	S <u> </u> T <u> </u> R <u> </u>	<u> </u>
3. Miscellaneous Property in Sec.	S <u> </u> T <u> </u> R <u> </u>	<u> </u>
	S <u> </u> T <u> </u> R <u> </u>	<u> </u>

STATE OF MICHIGAN
Branch County
Recorded

12-30-1997 10:05:53

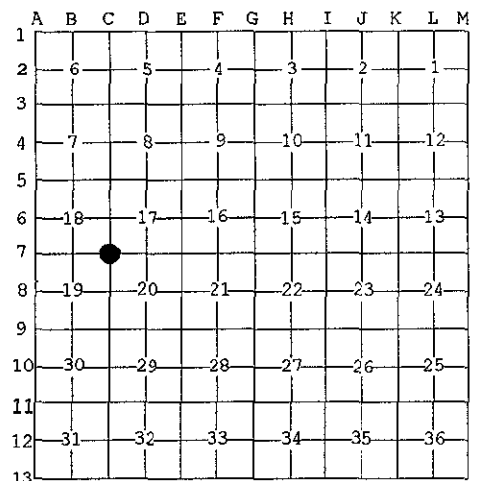
Linda Lee Morrison-Mathews
REGISTER OF DEEDS
Liber **00003** Page **0196**

Register of Deeds Stamp & File Number

4. Lot No. _____, Recorded Plat _____
5. Private Claims _____

I, EDWARD W. REED, in a field survey on DECEMBER 3, 1997 do hereby state that under requirements of P.A. 74, Michigan P.A. of 1970, the corner points mentioned in lines 1 and 2 above were in conformance with regulations and rules therefore as required in the current manual of survey instructions of the United States Department of the Interior, Bureau of Land Management or by a decree of a Court of Law and for that the corner points mentioned in lines 3, 4 and 5 above were in conformance with the rules of the Michigan Board of Land Surveyors or by a Decree of a Court of Law; established, re-established, monumented, recovered, found as expressed below:

NOTE: Not more than 2 corners, all in the same town and range, may be recorded on this certificate.



A. Description of original monument and accessories and/or subsequent restoration:
CORNER COMMON TO SECTIONS 17-18-19-20

1826: R. CLARK, JR., DEPT SURVEYOR - CORNER SET
: BENNETT, SURVEYOR- SET STONE

1898, MINER, SURVEYOR - FOUND STONE SET BY BENNETT

1981: E.R. REED, CO. SURVEYOR - DUG FOR STONE FROM OLD WITNESS, UNABLE TO LOCATED, RESET CORNER FROM FOUND EVIDENCE AND OLD WITNESS. SET 5/8" X 24" POINTED IRON BAR. RECORDED IN LCRC II-0050

1991: D. ANDREWS, SURVEYOR - RECORDED CORNER IN LCRC # II-0163

ACCEPTED BY THE BRANCH COUNTY SURVEY PEER GROUP AS THE OFFICIAL CORNER UNDER MICHIGAN PUBLIC ACT 345 OF 1990 AT A MEETING HELD ON 12-08-97

B. Description of corner evidence found and/or method applied in restoring or reestablishing corner:

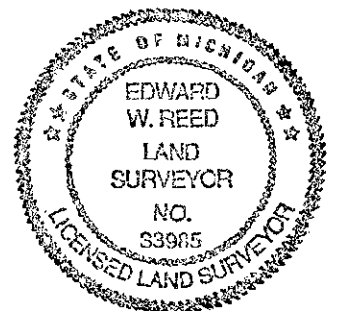
E.R. Reed
E.R. REED

FOUND POINTED IRON ROD IN CI-MONUMENT BOX. PLACED REMON CAP OVER IRON

C. Description of monument for corner and accessories established to perpetuate locating the position of the corner:

IRON ROD IN CI-MONUMENT BOX

- POWER POLE, S 48 W 53.88'
- FACE ON CONC. FAP MARKER, S 52 E 49.8'
- POWER POLE, S 22 E 70.09'
- NW CORNER OLD SCHOOL, S 40 E 125.60'
- 2" DIA. STEEL CORNER POST, CHAIN-LINK FENCE S & E, S 44E 45.4'
- CENTER OF CONC. CATCHBASIN, S 58 W 72.9'
- FACE OF POWER POLE, S 58W 71.30'
- R/R TIE POST, N 45 E 47.85'



AND IS ACCEPTED AS A CAREFUL AND FAITHFUL PERPETUATION OF THE POSITION OF THE ORIGINAL CORNER

Signed by Edward W. Reed
EDWARD W. REED

Date DECEMBER 3, 1997

Surveyor's Michigan License No. 33985