

REMONUMENTATION

MAR 21 1997

COMMISSION

BRANCH COUNTY REMONUMENTATION CORNER
LAND CORNER RECORDATION CERTIFICATE
Filing Requirement of Act 74, Mich. P.A. 1970

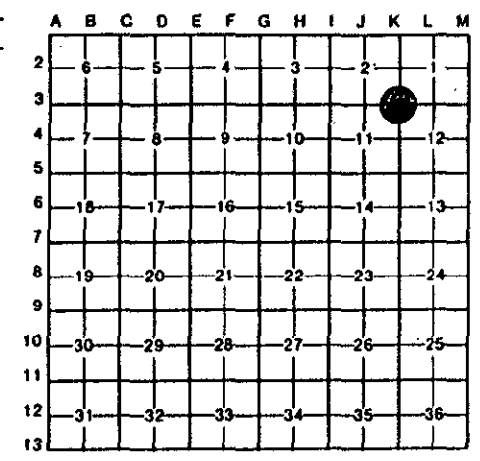
For corners in

BRANCH (County)	Located In:	Corner Code #
SHERWOOD TWP. 1. Public Land Survey	T 5 S R 8 W	K-3
	T _____ R _____	_____
	T _____ R _____	_____
	T _____ R _____	_____
2. Property Controlling in Section	S _____ T _____ R _____	_____
	S _____ T _____ R _____	_____
3. Miscellaneous Property in Sec.	S _____ T _____ R _____	_____
	S _____ T _____ R _____	_____

STATE OF MICHIGAN
" Branch County
Recorded
10-30-1996 09:23:01
Linda Lee Morrison-Mathews
REGISTER OF DEEDS

Liber 00003 Page 0092
Register of Deeds Stamp & File Number

4. Lot No. _____, Recorded Plat _____
5. Private Claims _____



I, EDWARD W. REED in a field survey on OCTOBER 8, 19 96, do hereby certify that under requirements of P.A. 74, Michigan P.A. of 1970, the corner points mentioned in lines 1 and 2 above were in conformance with regulations and rules therefore as required in the current manual of survey instructions of the United States Department of the Interior, Bureau of Land Management or by a decree of a Court of Law and/or that the corner points mentioned in lines 3, 4 and 5 above were in conformance with the rules of the Michigan Board of Land Surveyors or by a Decree of a Court of Law; established, re-established, monumented, re-monumented, recovered, found as expressed below:

NOTE: Not more than 4 corners, all in the same town and range, may be recorded on this certificate.

A. Description of original monument and accessories and/or subsequent restoration:
CORNER COMMON TO SECTIONS 1, 2, 11, & 12, T5S, R8W, SHERWOOD TWP., BRANCH COUNTY, MI
1825: J. MULLETT, DEP. SURVEYOR, CORNER SET
1891: I.D. MINER, SET STONE IN BROKEN BRICK
OLD WITNESS OF E.R. REED INDICATE STONE 12" DEEP, SET PIPE ON TOP

B. Description of corner evidence found and/or method applied in restoring or reestablishing corner:
FOUND 1/2" x 18" REBAR & "FRED CUTCHER" CAP OVER PIPE, OVER STONE AGREEING WITH OLD WITNESS 28" REMOVED CUTCHER CAP AND PLACED REMONUMENTATION CAP ON IRON MAPLE (NOW ROTTEN STUMP HOLE) S30E 68.98'
SET CAST IRON BOX FLUSH WITH ROAD SURFACE

ACCEPTED BY THE BRANCH COUNTY SURVEY PEER GROUP AS THE OFFICIAL CORNER UNDER MICHIGAN PUBLIC ACT 345 OF 1990 AT A MEETING HELD ON oct. 9, 1996
E.R. Reed, Co. Rep.
E.R. REED

C. Description of monument for corner and accessories established to perpetuate locating the position of the corner:
1/2" x 18" REBAR WITH REMONUMENTATION CAP IN CAST IRON BOX
4.50" N OF FENCELINE WEST
1.72" N OF CENTERLINE OF TUTTLE ROAD
S84W 25.2' TO RAILROAD TIE ANCHOR POST
N20E 119.2' TO FACE OF POWER POLE
S10E 130.06' TO CENTER OF 34" MAPLE
S38E 34.0' TO FACE OF POWER POLE



AND IS ACCEPTED AS A CAREFUL AND FAITHFUL PERPETUATION OF THE POSITION OF THE ORIGINAL CORNER.
Signed by Edward W. Reed Date OCTOBER 8, 1996
Surveyor's Michigan License No. 33985