

SURVEY & MONUMENTATION

JAN 23 1996

BRANCH COUNTY REMONUMENTATION CORNER
LAND CORNER RECORDATION CERTIFICATE

00003 Page 0009

COMMISSION

Filing Requirement of Act 74, Mich. P.A. 1970

For corners in

BRANCH (County)	Located In:	Corner Code #
COLDWATER TWP. Public Land Survey	T 6 S R 6 W	E-4
	T R	
	T R	
	T R	
2. Property Controlling in Section	S T R	
	S T R	
3. Miscellaneous Property in Sec.	S T R	
	S T R	

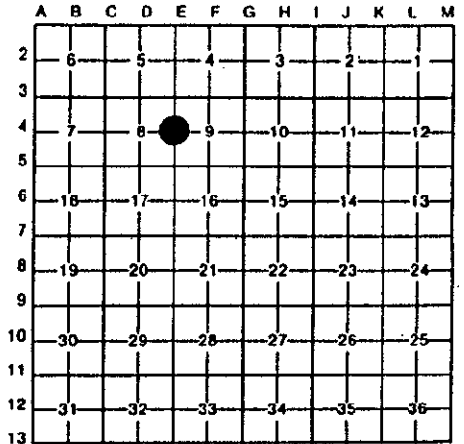
STATE OF MICHIGAN
Branch County
Recorded

09-28-1995 10:18:31

Linda Lee Morrison-Mathews
REGISTER OF DEEDS

Register of Deeds Stamp & File Number
Liber 00003 Page 0009

- 4. Lot No. _____, Recorded Plat _____
- 5. Private Claims _____



I, Edward W. Reed, in a field survey on August 21, 19 95, do hereby certify that under requirements of P.A. 74, Michigan P.A. of 1970, the corner points mentioned in lines 1 and 2 above were in conformance with regulations and rules therefore as required in the current manual of survey instructions of the United States Department of the Interior, Bureau of Land Management or by a decree of a Court of Law and/or that the corner points mentioned in lines 3, 4 and 5 above were in conformance with the rules of the Michigan Board of Land Surveyors or by a Decree of a Court of Law; established, re-established, monumented, re-monumented, recovered, found as expressed below:

NOTE: Not more than 4 corners, all in the same town and range, may be recorded on this certificate.

A. Description of original monument and accessories and/or subsequent restoration:

QUARTER CORNER COMMON TO SECTIONS 8 & 9, T6S, R6W, COLDWATER TWP., BRANCH COUNTY, MI.

- 1829: O. Risdon GLO Dep. Surveyor-set corner
- 1874: County Surveyors Records Liber 1, Page 254, planted stone and cobbles
- 1928: F. Stoll, Surveyor, found quarter corner, set concrete monument and brass cap
- 1946: H. L. Russell, County Surveyor, tied Plat of "Roby's Plat" to corner
- 1958: E. R. Reed, County Surveyor, tied Plat of "Urbandale" to corner
- 1964: C. B. Wood, Surveyor, tied Plat of "Ebyview" to corner
- 1973: A. J. Hatt, Surveyor-found corner, concrete monument and brass cap, recorded L.C.R.#0069

B. Description of corner evidence found and/or method applied in restoring or reestablishing corner:

Found brass cap in concrete monument as described in old notes
Did not set remonumentation cap on this iron
Set monument box 3" up above ground surface

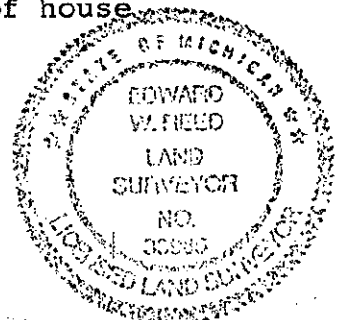
ACCEPTED BY THE BRANCH COUNTY SURVEY PEER GROUP AS THE OFFICIAL CORNER UNDER MICHIGAN PUBLIC ACT 346 OF 1990 AT A MEETING HELD ON 9-13-95

E.R. Reed, Co. Rep.

C. Description of monument for corner and accessories established to perpetuate locating the position of the corner:

- S85°E 26.9'-12" hickory
- N20°W 177.9'-power pole
- N78°W 179.82'-to face of power pole
- N89°W 212.39'-to NE corner of house
- SW 119'-NE corner of remaining foundation of old barn (now gone)
- N58°W 222.92'-to face of power pole
- N70°W 267.88'-to center of 2" steel fence corner post

And is accepted as a careful and faithful perpetuation of the position of the original corner.



Signed by Edward W. Reed
Surveyor's Michigan License No. 33985

Date August 21, 1995