

**SURVEY & MONUMENTATION**

JAN 23 1996

**COMMISSION**

**BRANCH COUNTY REMONUMENTATION CORNER  
LAND CORNER RECORDATION CERTIFICATE**

Filing Requirement of Act 74, Mich. P.A. 1970

STATE OF MICHIGAN  
Branch County  
Recorded

09-28-1995 10:19:00

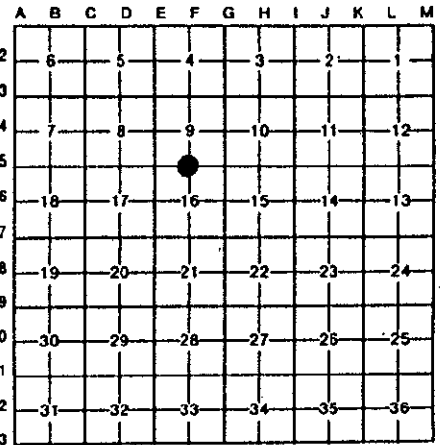
Linda Lee Morrison-Mathews  
REGISTER OF DEEDS

Liber **00003** Page **0013**

Register of Deeds Stamp & File Number

For corners in

|                                       |                         |               |
|---------------------------------------|-------------------------|---------------|
| <u>BRANCH</u><br>(County)             | Located In:             | Corner Code # |
| COLDWATER TWP.                        |                         |               |
| 1. Public Land Survey                 | T <u>6S</u> R <u>6W</u> | <u>F-5</u>    |
|                                       | T _____ R _____         | _____         |
|                                       | T _____ R _____         | _____         |
|                                       | T _____ R _____         | _____         |
| 2. Property Controlling in Section    | S _____ T _____ R _____ | _____         |
|                                       | S _____ T _____ R _____ | _____         |
| 3. Miscellaneous Property in Sec.     | S _____ T _____ R _____ | _____         |
|                                       | S _____ T _____ R _____ | _____         |
| 4. Lot No. _____, Recorded Plat _____ |                         |               |
| 5. Private Claims _____               |                         |               |



I, Edward W. Reed, in a field survey on June 21, 19 95, do hereby certify that under requirements of P.A. 74, Michigan P.A. of 1970, the corner points mentioned in lines 1 and 2 above were in conformance with regulations and rules therefore as required in the current manual of survey instructions of the United States Department of the Interior, Bureau of Land Management or by a decree of a Court of Law and/or that the corner points mentioned in lines 3, 4 and 5 above were in conformance with the rules of the Michigan Board of Land Surveyors or by a Decree of a Court of Law; established, re-established, monumented, re-monumented, recovered, found as expressed below:

**NOTE: Not more than 4 corners, all in the same town and range, may be recorded on this certificate.**

**A. Description of original monument and accessories and/or subsequent restoration:**

QUARTER CORNER COMMON TO SECTIONS 9 & 16, T6S, R6W, COLDWATER TWP., BRANCH COUNTY, MI.

- 1829: O. Risdon-set corner
- 1928: F. Soll-set iron pipe
- 1951: H. L. Russell-brass plate
- 1953: E. R. Reed-Plat of "Green Acres" tied to brass plate
- 1960: E. R. Reed-brass plate
- 1967: E. R. Reed-Plat of "Chapman Meadows" tied to brass plate
- 1973: E. R. Reed-L.C.R.#055-reset 3/4" dia. iron rod

ACCEPTED BY THE BRANCH COUNTY SURVEY PEER GROUP AS THE OFFICIAL CORNER UNDER MICHIGAN PUBLIC ACT 345 OF 1990 AT A MEETING HELD ON 9-13-95  
E.R. Reed Co Rep.

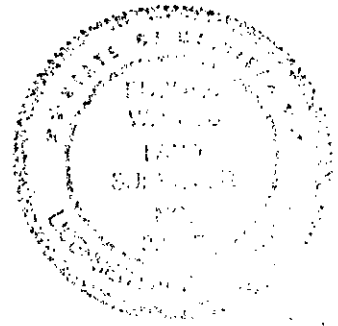
**B. Description of corner evidence found and/or method applied in restoring or reestablishing corner:**

- Found 3/4" iron rod
- Set 1/2" iron, remonumentation cap and cast iron monument box

**C. Description of monument for corner and accessories established to perpetuate locating the position of the corner:**

- South 22.90'-face of concrete curb
- S24°E 96.5'-NE corner of house
- S70°W 77.3'-power pole
- N37°W 103.3'-SE corner of house
- N50°W 73.2'-to center of fir tree
- N2.7'-of centerline of road

And is accepted as a careful and faithful perpetuation of the position of the original corner.



Signed by Edward W. Reed  
Surveyor's Michigan License No. 33985

Date June 20, 1995