

SURVEY & REMONUMENTATION

FEB 13 2001

SECTION

BRANCH COUNTY REMONUMENTATION LAND CORNER RECORDATION CERTIFICATE Filing Requirement of Act 74, Mich. P.A. 1970

STATE OF MICHIGAN
Branch County
Recorded

For corners in
BRANCH

Located In:

Corner Code #

09-26-2000 10:15:40

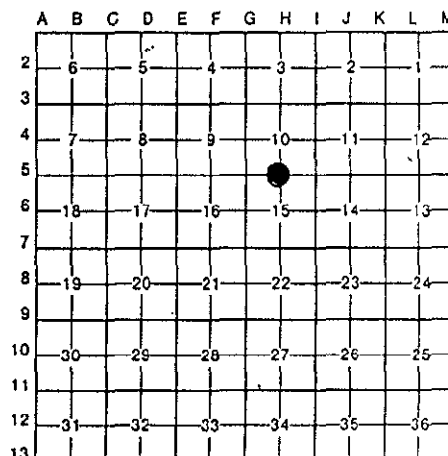
Linda Lee Morrison-Mathews
REGISTER OF DEEDS

Liber 00004 Page 0092

Register of Deeds Stamp & File Number

(County) BATAVIA TWP. 1. Public Land Survey 2. Property Controlling in Section 3. Miscellaneous Property in Sec.	Located In: T <u>6</u> S R <u>7</u> W T _____ R _____ T _____ R _____ T _____ R _____ S _____ T _____ R _____ S _____ T _____ R _____ S _____ T _____ R _____ S _____ T _____ R _____	Corner Code # H-05 _____ _____ _____ _____ _____ _____ _____
--	---	--

4. Lot No. _____, Recorded Plat _____
 5. Private Claims _____



BATAVIA TWP., T6S, R7W

I, EDWARD R. REED, P.S. on a field survey on APRIL 25, ~~19~~ 2000, do hereby certify that under requirements of P.A. 74, Michigan P.A. of 1970, the corner points mentioned in lines 1 and 2 above were in conformance with regulations and rules therefore as required in the current manual of survey instructions of the United States Department of the Interior, Bureau of Land Management or by a decree of a Court of Law and/or that the corner points mentioned in lines 3, 4 and 5 above were in conformance with the rules of the Michigan Board of Land Surveyors or by a Decree of a Court of Law; established, re-established, monumented, re-monumented, recovered, found as expressed below:

NOTE: Not more than 4 corners, all in the same town and range, may be recorded on this certificate.

A. Description of original monument and accessories and/or subsequent restoration:

- 1826: G.L.O. FIELDNOTES OF WM. BROOKFIELD, D.S. ; STAKE SET.
- 1856: SURVEY BY H. CARY, DEP. CO. SURVEYOR: (MARKER UNKNOWN).
- 1874: SURVEY BY JOHN H. BENNETT, CO. SURVEYOR: "FD. BOTH U.S. TREES & STAKE".
- 1970: G.E. ANDERSON, MSHD SURVEY: "SET PIPE IN MONUMENT BOX, ON N-S FENCELINE".

B. Description of corner evidence found and/or method applied in restoring or reestablishing corner:

FOUND MSHD PIPE IN MONUMENT BOX. DUG AROUND AREA, BUT FOUND NO OTHER EVIDENCE. VERY OLD FENCELINE RUNNING NORTH FROM OLD RR-RAIL ANCHOR POST. I ACCEPTED THIS EVIDENCE AND SET A 1/2" X 18" REBAR WITH BRANCH COUNTY REMONUMENTATION CAP IN THE IRON PIPE, WITH CONCRETE AROUND REBAR.

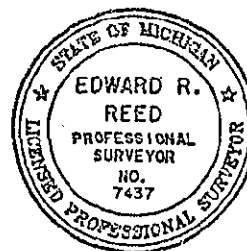
ACCEPTED THIS AS THE BEST EVIDENCE AVAILABLE OF THE POSITION OF THE ORIGINAL CORNER.

ACCEPTED BY THE BRANCH COUNTY
SURVEY PEER GROUP AS THE OFFICIAL
CORNER UNDER MICHIGAN PUBLIC ACT 245
OF 1990 AT A MEETING HELD ON
Aug 9, 2000

E.R. Reed
E. R. REED, Co. Rep.

C. Description of monument for corner and accessories established to perpetuate locating the position of the corner:

- BRANCH COUNTY REMONUMENTATION CAP ON REBAR IN PIPE, IN C-1 MONUMENT BOX:
- N42 E 32.3' - P.K. MAIL ON W. SIDE OF POWER POLE.
- NORTH 26.2' - FACE OF RR-RAIL FENCE CORNER POST.
- NORTH 02 WEST 53.7' - CENTER OF 24" DOUBLE HICKORY TREE.
- SOUTH 80 EAST 100.80' - N.W. FACE OF POWER POLE.



Signed by *Edward R. Reed* EDWARD R. REED, P.S.

Date APRIL 25, 2000

Surveyor's Michigan License No. 7437