

1993

BRANCH COUNTY REMONUMENTATION CORNER
 LAND CORNER RECORDATION CERTIFICATE
 Filing Requirement of Act 74, Mich. P.A. 1970

COMMISSION

For corners in

BRANCH (County)	Located In:	Corner Code #
1. Public Land Survey	T <u>7</u> S R <u>6</u> W	<u>G - 3</u>
	T _____ R _____	_____
	T _____ R _____	_____
	T _____ R _____	_____
2. Property Controlling in Section	S _____ T _____ R _____	_____
	S _____ T _____ R _____	_____
3. Miscellaneous Property in Sec.	S _____ T _____ R _____	_____
	S _____ T _____ R _____	_____

272

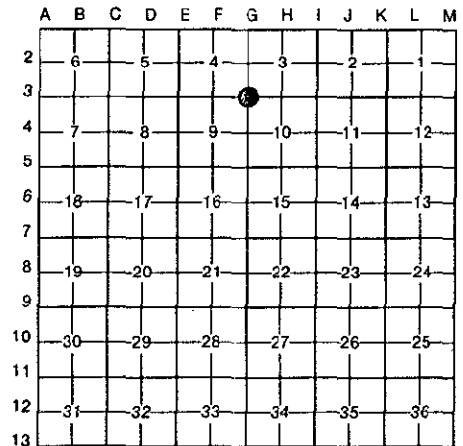
REC'D FOR RECORD
 STATE OF MICHIGAN
 BRANCH COUNTY
 93 DEC 27 AM 10:07
John A. Morrison
 REGISTER OF DEEDS

Register of Deeds Stamp & File Number

4. Lot No. _____, Recorded Plat _____
 5. Private Claims _____

I, EDWARD R. REED, in a field survey on DECEMBER 2, 1993, do hereby certify that under requirements of P.A. 74, Michigan P.A. of 1970, the corner points mentioned in lines 1 and 2 above were in conformance with regulations and rules therefore as required in the current manual of survey instructions of the United States Department of the Interior, Bureau of Land Management or by a decree of a Court of Law and/or that the corner points mentioned in lines 3, 4 and 5 above were in conformance with the rules of the Michigan Board of Land Surveyors or by a Decree of a Court of Law; established, re-established, monumented, re-monumented, recovered, found as expressed below:

NOTE: Not more than 4 corners, all in the same town and range, may be recorded on this certificate.



OVID TWP., T7S, R6W

A. Description of original monument and accessories and/or subsequent restoration:

G-3: SECTION CORNER 3-4-9-10, T7S, R6W, OVID TOWNSHIP.

GLO = NOV. 1825 - W. BROOKFIELD, DEP. SURVEYOR: "N BETWEEN SEC 9 & 10, 80.00 - SET POST COR SEC'S 3, 4, 9 & 10. BEECH 9 S17W 34, BEECH 8 S81E 23".

1/20/1848- D. WILSON, CO. SURVEYOR: (WILSON REFERS TO CORNER BUT DOES NOT DESCRIBE CORNER MONUMENT). 1/12 - COUNTY SURVEYOR'S RECORDS.

4/11/63- R. L. ROON, MICHIGAN STATE HIGHWAY DEPT.: "FD. 10" STONE 15" BELOW SURFACE WITH BRICK & STONE AROUND. 13" WALNUT N22W 20.00; QUAD MAPLE N45E 32.15'; 14" WALNUT S35E 67.11'; 3/4" PIPE S05E 30.20'." (STONE & BRICK DESCRIBED ABOVE ALSO FOUND BY COLE & ASSOC. ENGINEERS IN 1957, WORKING FOR THE MICHIGAN DEPT. OF STATE HIGHWAYS FOR I-69 HWY.)

B. Description of corner evidence found and/or method applied in restoring or reestablishing corner:

FOUND LARGE POINTED STONE, SURROUNDED BY SMALL STONES, BRICK AND RED PLASTIC FLAGGING, WITH A 1/2" REBAR BENT OVER STONE, FROM WITNESSES DESCRIBED ABOVE; ALSO A BADLY RUSTED 4" DIA. METAL RING AND A BRIGHT BLUE STONE, ALL AT A DEPTH OF ABOUT 10" BELOW ROAD SURFACE; AND IS ACCEPTED AS THE CAREFUL AND FAITHFUL PERPETUATION OF THE POSITION OF THE ORIGINAL CORNER. SET A 4-3/4" LONG X 1/2" DIA. REBAR ROD WITH I.D. CAP NO. 7437, IN CONCRETE, OVER POINT ON STONE, IN MONUMENT BOX.

C. Description of monument for corner and accessories established to perpetuate locating the position of the corner:

SET A 4-3/4" LONG X 1/2" DIA. REBAR ROD WITH I.D. CAP NO. 7437, IN CONCRETE, OVER POINT ON STONE, IN MONUMENT BOX.

- N 20 W 19.40' TO NAIL & SPOTTER ON EAST SIDE OF 24" WALNUT.
- S 04 E 35.30' TO NAIL & SPOTTER ON EAST SIDE OF 32" WALNUT.
- N 55 E 32.10' TO NAIL & SPOTTER ON EAST SIDE OF 16" TWIN WALNUT.
- S 55 E 82.32' TO NAIL & SPOTTER ON NORTH SIDE OF 36" MAPLE.
- S 50 W 41.00' TO NAIL & SPOTTER ON WEST SIDE OF 20" TWIN WALNUT.
- 5.1' +/- NORTH OF C/L GRAVEL ROAD.

AND IS ACCEPTED AS A CAREFUL AND FAITHFUL PERPETUATION OF THE POSITION OF THE ORIGINAL CORNER.

Signed by *Edward R. Reed*
 Surveyor's Michigan License No. 7437



Date 12/02/93