

SURVEY & REMONUMENTATION

MAR 13 1998

SECTION

**BRANCH COUNTY REMONUMENTATION CORNER
LAND CORNER RECORDATION CERTIFICATE
Filing Requirement of Act 74, Mich. P.A. 1970**

For corners in

| BRANCH (County) | Located In: | Corner Code # |
|---------------------------------------|-------------------|---------------|
| KINDERHOOK TWP. | T 8 S R 6 W | G-7 |
| 1. Public Land Survey | T ___ R ___ | _____ |
| | T ___ R ___ | _____ |
| | T ___ R ___ | _____ |
| 2. Property Controlling In Section | S ___ T ___ R ___ | _____ |
| | S ___ T ___ R ___ | _____ |
| 3. Miscellaneous Property in Sec. | S ___ T ___ R ___ | _____ |
| | S ___ T ___ R ___ | _____ |

STATE OF MICHIGAN
Branch County
Recorded

10-22-1997 09:56:51

Linda Lee Morrison-Mathews
REGISTER OF DEEDS

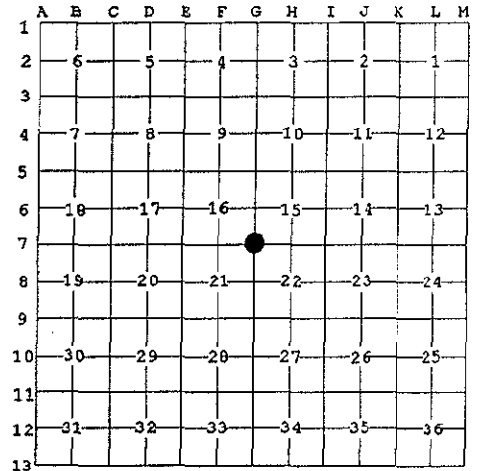
Liber 00003 Page 0166

Register of Deeds Stamp & File Number

4. Lot No. _____, Recorded Plat _____
5. Private Claims _____

I, EDWARD W. REED, in a field survey on AUGUST 26, 1997 do hereby state that under requirements of P.A. 74, Michigan P.A. of 1970, the corner points mentioned in lines 1 and 2 above were in conformance with regulations and rules therefore as required in the current manual of survey instructions of the United States Department of the Interior, Bureau of Land Management or by a decree of a Court of Law and/or that the corner points mentioned in lines 3, 4 and 5 above were in conformance with the rules of the Michigan Board of Land Surveyors or by a Decree of a Court of Law; established, re-established, monumented, recovered, found as expressed below:

NOTE: Not more than 2 corners, all in the same town and range, may be recorded on this certificate.



A. Description of original monument and accessories and/or subsequent restoration:
CORNER COMMON TO SECTIONS 15-16-21-22, KINDERHOOK TWP

- 1828: R. CLARK jr, DEPT. SURVEYOR - SET CORNER
- 1911: J. COX, CO. SURVEYOR - FOUND STONE WELL SET
- 1975: E.R. REED, CO. SURVEYOR - FOUND POINTED STONE WITH IRON BENT OVER TOP, RECORDED LCRC # 0167
- 1976: PLAT OF "BAY VIEW" TIED TO CORNER
- 1996: JAMES RUSSEL, SURVEYOR - FOUND STONE

B. Description of corner evidence found and/or method applied in restoring or reestablishing corner:

FOUND POINTED STONE WITH SMALL IRON BENT OVER TOP

C. Description of monument for corner and accessories established to perpetuate locating the position of the corner:

SET 3/4" X 30" IRON ROD, ALSO SET 1/2" X 18" REBAR IRON OVER TOP WITH REMON CAP IN CI-MONUMENT BOX

- 30" HICKORY, NORTH 18.0' TO NAIL & WASHER, WEST SIDE
- 42" WALNUT, NORTH 46.15' TO NAIL & WASHER, EAST SIDE
- 20" OAK, S10E, 19.60 FEET
- 14" WALNUT, S48E 28.3'
- CARSONITE MARKER PLACED ALONG SIDE

AND IS ACCEPTED AS A CAREFUL AND FAITHFUL PERPETUATION OF THE POSITION OF THE ORIGINAL CORNER

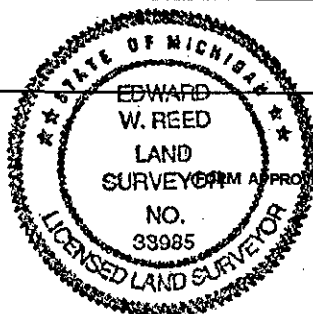
Signed by Edward W. Reed
EDWARD W. REED

Date AUGUST 26, 1997

Surveyor's Michigan License No. 33985

ACCEPTED BY THE BRANCH COUNTY SURVEY PEER GROUP AS THE OFFICIAL CORNER UNDER MICHIGAN PUBLIC ACT 345 OF 1990, AT A MEETING HELD ON 9-10-97

E.R. Reed, P.S.-Co. Rep.
E.R. REED E.R. REED



APPROVED BY MICHIGAN STATE BOARD OF PROFESSIONAL SURVEYORS, JAN. 26
REVISED MAY 14, 1975

REVISED JAN., 198
REVISED OCT., 199