

**SURVEY &  
REMONUMENTATION**

**MAR 13 1998**

**SECTION**

**BRANCH COUNTY REMONUMENTATION CORNER  
LAND CORNER RECORDATION CERTIFICATE  
Filing Requirement of Act 74, Mich. P.A. 1970**

For corners in

<u>BRANCH</u> <small>(County)</small>	Located In:	Corner Code #
GILEAD TWP.	T 8 S R 7 W	G-7
1. Public Land Survey	T ___ R ___	_____
	T ___ R ___	_____
	T ___ R ___	_____
2. Property Controlling in Section	S ___ T ___ R ___	_____
	S ___ T ___ R ___	_____
3. Miscellaneous Property in Sec.	S ___ T ___ R ___	_____
	S ___ T ___ R ___	_____

STATE OF MICHIGAN  
Branch County  
Recorded

12-30-1997 10:05:07

Linda Lee Morrison-Mathews  
REGISTER OF DEEDS

Liber 00003 Page 0190

Register of Deeds Stamp & File Number

4. Lot No. \_\_\_\_\_, Recorded Plat \_\_\_\_\_  
5. Private Claims \_\_\_\_\_

I, EDWARD W. REED, in a field survey on OCTOBER 15, 1997 do hereby state that under requirements of P.A. 74, Michigan P.A. of 1970, the corner points mentioned in lines 1 and 2 above were in conformance with regulations and rules therefore as required in the current manual of survey instructions of the United States Department of the Interior, Bureau of Land Management or by a decree of a Court of Law and/or that the corner points mentioned in lines 3, 4 and 5 above were in conformance with the rules of the Michigan Board of Land Surveyors or by a Decree of a Court of Law; established, re-established, monumented, recovered, found as expressed below:

A	B	C	D	E	F	G	H	I	J	K	L	M
1												
2	6	5	4	3	2	1						
3												
4	7	8	9	10	11	12						
5												
6	18	17	16	15	14	13						
7												
8	19	20	21	22	23	24						
9												
10	30	29	28	27	26	25						
11												
12	31	32	33	34	35	36						
13												

**NOTE: Not more than 2 corners, all in the same town and range, may be recorded on this certificate.**

A. Description of original monument and accessories and/or subsequent restoration:  
CORNER COMMON TO SECTIONS 15-16-21-22

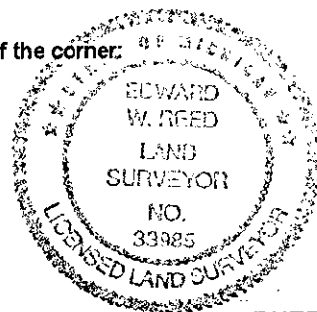
1828: ROBERT CLARK, jr, DEPT SURVEYOR- SET CORNER  
1871: J.H. BENNETT, DEPT SURVEYOR - FOUND OLD STAKE 20" IN SAND AND CLAY, PLANTED LONG GRANITE STONE WITH BRICK AND COBBLES FOR CORNER

B. Description of corner evidence found and/or method applied in restoring or reestablishing corner:

DUG LARGE HOLE (12' X 12', 4' DEEP WITH BACKHOE), AT LOCATION AGREEING WITH OLD FENCES, FOUND A GROUP OF STONES IN CORRECT POSITION WITH BRICK AROUND.  
SET 1/2" X 18" REBAR IRON WITH REMON CAP IN CI-MONUMENT BOX 4" BELOW GRAVEL ROAD GRADE

C. Description of monument for corner and accessories established to perpetuate locating the position of the corner:

TEL. PED, S45E 37.4' TO CORNER  
10" MAPLE, S62E 65.6' TO CENTER  
BASE OF CONC. ANCHOR POST, S32E 32.00'  
4" ROUND STEEL ANCHOR POST, S50W 32.00'  
4" MAPLE, N32W 94.5' TO CENTER  
12" WHITE OAK, S70W 68.1' TO CENTER



AND IS ACCEPTED AS A CAREFUL AND FAITHFUL PERPETUATION OF THE POSITION OF THE ORIGINAL CORNER

Signed by Edward W. Reed  
EDWARD W. REED

Date OCTOBER 15, 1997

Surveyor's Michigan License No. 33985

ACCEPTED BY THE BRANCH COUNTY  
SURVEY PEER GROUP AS THE OFFICIAL  
CORNER UNDER MICHIGAN PUBLIC ACT 345  
OF 1990 AT A MEETING HELD ON  
12-08-97

E. R. Reed  
F. R. REED