

APPROVED

ate 7-25-94 [Signature]  
CALHOUN COUNTY  
REMONUMENTATION.

CALHOUN COUNTY REMONUMENTATION

LAND CORNER RECORDATION CERTIFICATE  
Filing Requirement of Act 74, Mich. P.A. 1970

STATE OF MICHIGAN  
CALHOUN COUNTY  
RECORDED

28 JUL 94 11:13 A.M.

ANNE B. HORLANDER  
CLERK - REGISTER OF DEEDS

For corners in

Calhoun <small>(County)</small>	Located In:	Corner Code #
1. Public Land Survey	T 1 S R 6 W	K-12
	T _____ R _____	_____
	T _____ R _____	_____
	T _____ R _____	_____
2. Property Controlling in Section	S _____ T _____ R _____	_____
	S _____ T _____ R _____	_____
3. Miscellaneous Property in Sec.	S _____ T _____ R _____	_____
	S _____ T _____ R _____	_____
4. Lot No. _____, Recorded Plat _____		
5. Private Claims _____		

Register of Deeds Stamp & File Number

A	B	C	D	E	F	G	H	I	J	K	L	M
2	6	5	4	3	2	1						
3												
4	7	8	9	10	11	12						
5												
6	18	17	16	15	14	13						
7												
8	19	20	21	22	23	24						
9												
10	30	29	28	27	26	25						
11												
12	31	32	33	34	35	36						
13												

I, Donald J. Davis, in a field survey on June 22, 1994, do hereby certify that under requirements of P.A. 74, Michigan P.A. of 1970, the corner points mentioned in lines 1 and 2 above were in conformance with regulations and rules therefore as required in the current manual of survey instructions of the United States Department of the Interior, Bureau of Land Management or by a decree of a Court of Law and/or that the corner points mentioned in lines 3, 4 and 5 above were in conformance with the rules of the Michigan Board of Land Surveyors or by a Decree of a Court of Law; established, re-established, monumented, re-monumented, recovered, found as expressed below:

**NOTE: Not more than 4 corners, all in the same town and range, may be recorded on this certificate.**

A. Description of original monument and accessories and/or subsequent restoration:

1825, Lyon	Pike, 1974; Dekeyser & Assoc.
18" White Oak N 58° W 211 Links	Angle iron in pond.
20" Burr Oak N 37° E 63 links	8" Maple N 20° W 10.25'
	10'± South of center of stone row.
	12" Maple N 45° E 17.25'.

B. Description of corner evidence found and/or method applied in restoring or reestablishing corner:

Could not find angle iron. Used distance from Dekeyser survey, Job No. 11155. Traversed back into swamp and set corner. Corner fell 10'± South of stone row, under water.

SURVEY &  
REMONUMENTATION

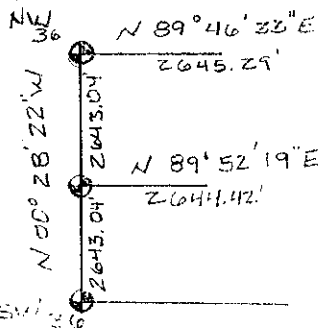
OCT 24 1994

COMMISSION

LIBER 1760 PAGE 639

C. Description of monument for corner and accessories established to perpetuate locating the position of the corner:

Set Berntsen monument with stones and carsonite marker. No witnesses near.



Signed by [Signature]  
Surveyor's Michigan License No. 17617

Date July 25, 1994