

1993

COMMISSION

CALHOUN COUNTY REMONUMENTATION LAND CORNER RECORDATION CERTIFICATE Filing Requirement of Act 74, Mich. P.A. 1970

Clerk-Register CALHOUN COUNTY, MICH. ANNE B. MOPLANDER

SEP 1 10 33 AM '93

RECORDED

For corners in

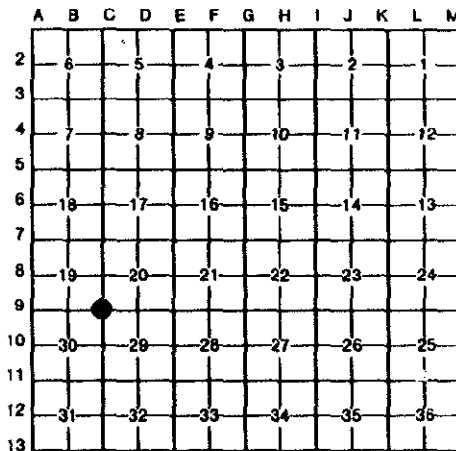
Table with columns: CALHOUN (County), Located In:, Corner Code #. Rows include Public Land Survey, Property Controlling in Section, Miscellaneous Property in Sec.

Register of Deeds Stamp & File Number

4. Lot No. \_\_\_\_\_, Recorded Plat \_\_\_\_\_
5. Private Claims \_\_\_\_\_

I, DONALD J. DAVIS, in a field survey on JULY 16, 19 93, do hereby certify that under requirements of P.A. 74, Michigan P.A. of 1970, the corner points mentioned in lines 1 and 2 above were in conformance with regulations and rules therefore as required in the current manual of survey instructions of the United States Department of the Interior, Bureau of Land Management or by a decree of a Court of Law and/or that the corner points mentioned in lines 3, 4 and 5 above were in conformance with the rules of the Michigan Board of Land Surveyors or by a Decree of a Court of Law; established, re-established, monumented, re-monumented, recovered, found as expressed below:

NOTE: Not more than 4 corners, all in the same town and range, may be recorded on this certificate.



A. Description of original monument and accessories and/or subsequent restoration:

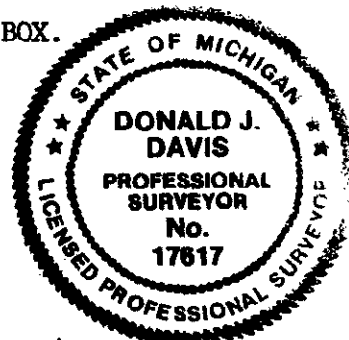
- TILE SET IN RESURVEY OF 1891.
TILE DESTROYED BY ROAD CONSTRUCTION.
CONCRETE MONUMENT SET BY CLYDE CHAMBERS R.L.S., 1954.
10" HICKORY S 87° W 37 LINKS. OLD GONE.
24" WHITE OAK N 72° E 40 LINKS. OLD GONE.

B. Description of corner evidence found and/or method applied in restoring or reestablishing corner:

- FOUND 48" CONCRETE MONUMENT UNDER ROAD.
MONUMENT IS ACCEPTED AS A CAREFUL REESTABLISHMENT OF ORIGINAL CORNER AND HAS BEEN USED EXTENSIVELY SINCE 1954 AS THE CORNER.

C. Description of monument for corner and accessories established to perpetuate locating the position of the corner:

- SET BERNISEN STAINLESS STEEL MONUMENT WITH BRONZE CAP IN MONUMENT BOX.
UTILITY POLE S 24° W 60.25' NAIL & SPOTTER.
SW CORNER GARAGE FOUNDATION N 40° E 165.80'.
14" LOCUST N 55° W 39.05' NAIL & SPOTTER.
12" LOCUST S 50° E 40.17' NAIL & SPOTTER.
NE CORNER (BRICK) FOUNDATION S 58° W 74.71'.
8" LOCUST N 60° E 71.47'



Signed by [Signature]
Surveyor's Michigan License No. 17617

Date August 14, 1993