

APPROVED
 Date 11-12-96
 CALHOUN COUNTY
 REMONUMENTATION.

STATE OF MICHIGAN
 CALHOUN COUNTY
 RECORDED

**CALHOUN COUNTY REMONUMENTATION
 LAND CORNER RECORDATION CERTIFICATE**
 Filing Requirement of Act 74, Mich. P.A. 1970

19 NOV 96 1:51 P.M.

ANNE B. NORLANDER
 CLERK - REGISTER OF DEEDS

For corners in

<u>Calhoun</u> (County)	Located In:	Corner Code #/
<u>Bedford Twp</u>		
1. Public Land Survey Sec 36	T <u>1</u> S R <u>8</u> W	<u>M-13</u>
	T _____ R _____	_____
	T _____ R _____	_____
	T _____ R _____	_____
2. Property Controlling in Section	S _____ T _____ R _____	_____
	S _____ T _____ R _____	_____
3. Miscellaneous Property in Sec.	S _____ T _____ R _____	_____
	S _____ T _____ R _____	_____

LIBER **1899** PAGE **591**

Register of Deeds Stamp & File Number

4. Lot No. _____, Recorded Plat _____
 5. Private Claims _____

I, Robert R. Carr, in a field survey on November 11, 19 96, do hereby certify that under requirements of P.A. 74, Michigan P.A. of 1970, the corner points mentioned in lines 1 and 2 above were in conformance with regulations and rules therefore as required in the current manual of survey instructions of the United States Department of the Interior, Bureau of Land Management or by a decree of a Court of Law and/or that the corner points mentioned in lines 3, 4 and 5 above were in conformance with the rules of the Michigan Board of Land Surveyors or by a Decree of a Court of Law; established, re-established, monumented, re-monumented, recovered, found as expressed below:

NOTE: Not more than 4 corners, all in the same town and range, may be recorded on this certificate.

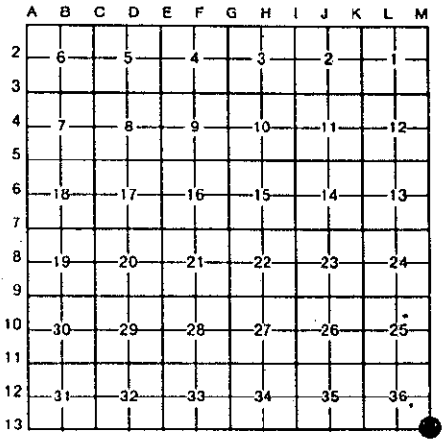
A. Description of original monument and accessories and/or subsequent restoration:

G.L.O.; J. Mullett D.S. 1825.
 Resurvey: Gifford 1891 says corner in lake.
 Plat of "Northside Hills" Liber 11 page 08.
 Plat of "Walter's Addition to Battle Creek" Liber 1 page 41.
 "Supervisor's Plat of Irving Park" Liber 9 pages 44 thru 47.

B. Description of corner evidence found and/or method applied in restoring or reestablishing corner:

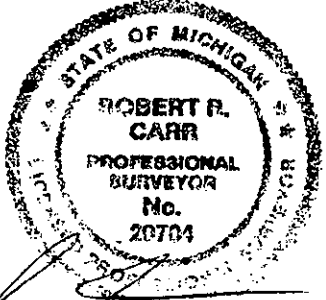
The original corner was set by Mullett, D.S. 1825.
 Gifford in resurvey of Pennfield Township 1891, says corner is in lake.
 No other reference to actual corner is found.
 Established range line between SE 1/4 Section 36 T1S R8W and SW 1/4 Section 31, T1S R7W from East 1/4 corner Section 36 T1S R8W and monumentation found in Plat of "Northside Hills" Liber 11 page 08 which shows West line of Section 31 T1S R7W perpetuated from "Supervisor's Plat of Irving Park" Liber 9 pages 44 thru 47.
 Established town line between SE 1/4 Section 36 T1S R8W and NE 1/4 Section 1 T2S R8W from South 1/4 corner Section 36 T1S R8W and monumentation in Plat of "Walter's Addition to Battle Creek" Liber 1 page 41 recorded June 29, 1887 and being the oldest Plat bordering on this line.
 See back of sheet for continuation

C. Description of monument for corner and accessories established to perpetuate locating the position of the corner:
 See back of sheet for description & witnesses to reference monuments "A" and "B".

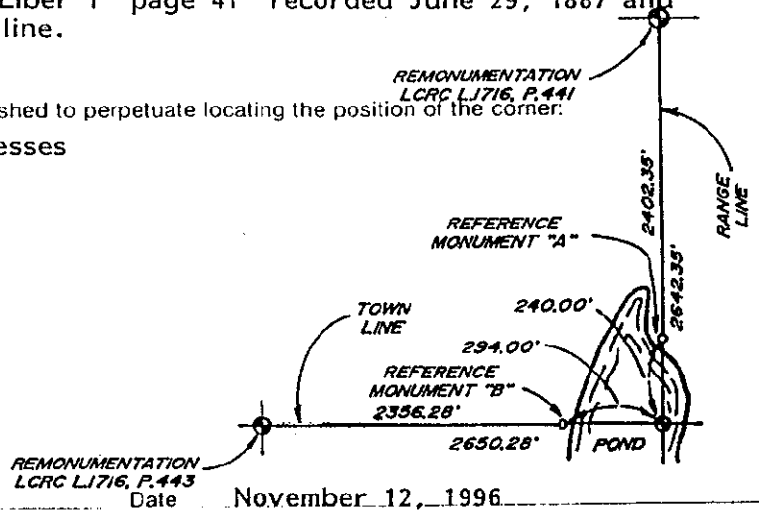


Bedford Township

**SURVEY &
 REMONUMENTATION**
 MAR 21 1997
 COMMISSION



Signed by Robert R. Carr
 Surveyor's Michigan License No. 20704



REMONUMENTATION LCRC L1716, P.443
 Date November 12, 1996

B. continuation

Mathematically intersected these lines for corner location in pond.

Set reference monument on range line 240.00 feet Northerly of computed corner ^{in pond} and
2402.35 feet Southerly of East 1/4 post Section 36 T1S R8W.

Set reference monument on town line 294.00 feet Westerly of computed corner in pond
and 2356.28 feet Easterly of South 1/4 corner Section 36 T1S R8W.

C. Description & witness to reference monuments "A" and "B":

Reference monument "A":

Berntsen Calhoun County Remonumentation Monument witnesses:

NW corner stone sign for Kellogg Community College on East side of
North Avenue N76°E 333.09 feet.

Nail & spotter in Southerly side of 24" Maple S52°E 118.26 feet.

Nail & spotter in Southerly side of 24" Maple S73°E 56.88 feet.

Nail & spotter in Southerly side of 18" Maple N50°E 126.90 feet.

Nail & spotter in Easterly side of 24" Maple N33°E 50.23 feet.

Reference Monument "B":

Berntsen Calhoun County Remonument Monument in monument box flush
with ground.

Most Southerly corner of concrete pad for gazebo N47°W 163.99 feet.

Nail & spotter in Northerly side of 10" Locust S68°W 146.49 feet.

Nail & spotter in Northerly side of 16" Locust S49°W 155.39 feet.

Nail & spotter in Southerly side of 9" Pine S76°E 10.32 feet.

Nail & spotter in Westerly side of 9" Pine S18°E 6.13 feet.

28 feet West of waters edge.

5.7 feet East of East edge of Linear Park bituminous path.