

APPROVED

Date AUG. 21 1996

CALHOUN COUNTY REMONUMENTATION.

CALHOUN COUNTY REMONUMENTATION

LAND CORNER RECORDATION CERTIFICATE
Filing Requirement of Act 74, Mich. P.A. 1970

STATE OF MICHIGAN
CALHOUN COUNTY
RECORDED

29 AUG 96 9:30 A.M.

ANNE D. NORLANDER
CLERK - REGISTER OF DEEDS

LIBER 1883 PAGE 224

Register of Deeds Stamp & File Number

For corners in

CALHOUN
(County)

Located in:

Corner Code #

Marengo Township
1. Public Land Survey

T 2 S R 5 W A-9

T R

T R

T R

2. Property Controlling
in Section

S T R

S T R

3. Miscellaneous
Property in Sec.

S T R

S T R

4. Lot No. _____, Recorded Plat _____

5. Private Claims _____

I, MICHAEL A. GROAT, in a field survey on JULY 9, 19 96 do hereby state that under requirements of P.A. 74, Michigan P.A. of 1970, the corner points mentioned in lines 1 and 2 above were in conformance with regulations and rules therefore as required in the current manual of survey instructions of the United States Department of the Interior, Bureau of Land Management or by a decree of a Court of Law and/or that the corner points mentioned in lines 3, 4 and 5 above were in conformance with the rules of the Michigan Board of Land Surveyors or by a Decree of a Court of Law, established, re-established, monumented, recovered, found as expressed below:

NOTE: Not more than 2 corners, all in the same town and range, may be recorded on this certificate.

| | A | B | C | D | E | F | G | H | I | J | K | L | M |
|----|----|---|----|---|----|---|----|---|----|---|----|---|---|
| 1 | | | | | | | | | | | | | |
| 2 | 6 | | 5 | | 4 | | 3 | | 2 | | 1 | | |
| 3 | | | | | | | | | | | | | |
| 4 | 7 | | 8 | | 9 | | 10 | | 11 | | 12 | | |
| 5 | | | | | | | | | | | | | |
| 6 | 18 | | 17 | | 16 | | 15 | | 14 | | 13 | | |
| 7 | | | | | | | | | | | | | |
| 8 | 19 | | 20 | | 21 | | 22 | | 23 | | 24 | | |
| 9 | | | | | | | | | | | | | |
| 10 | 30 | | 29 | | 28 | | 27 | | 26 | | 25 | | |
| 11 | | | | | | | | | | | | | |
| 12 | 31 | | 32 | | 33 | | 34 | | 35 | | 36 | | |
| 13 | | | | | | | | | | | | | |

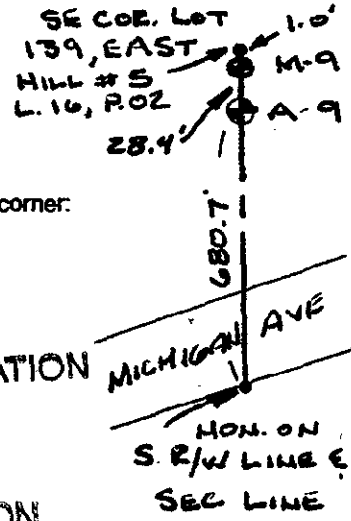
Marengo Township

A. Description of original monument and accessories and/or subsequent restoration:

GLO SURVEY LYON- NO DATE 43 LINKS SOUTH OF MARSHALL CORNER
RE-SURVEY GIFFORD-1892 SET STAKE IN POULTRY FIELD NO WITNESS NEAR

B. Description of corner evidence found and/or method applied in restoring or reestablishing corner:

CORNER FALLS IN THE SIDE OF A BANK ON SLOPE TO A PARKING LOT. THE CORNER WAS PROBABLY REMOVED WHEN THE PARKING LOT WAS BUILT. RE-SET THE CORNER 43 LINKS SOUTH OF M-9, MARSHALL TOWNSHIP, ON LINE BETWEEN THE SOUTHEAST CORNER OF LOT 139 OF EAST HILL # 5, LIBER 16, PAGE 02, WHICH IS 1.0 FEET NORTH OF M-9, MARSHALL TWP., AND A CONCRETE MONUMENT ON THE SECTION LINE ON THE SOUTH RIGHT OF WAY LINE OF MICHIGAN AVE.



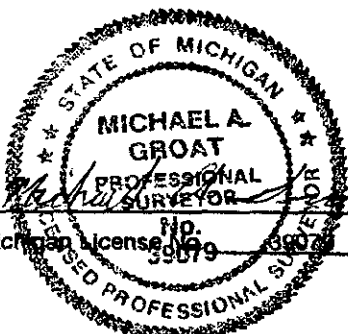
C. Description of monument for corner and accessories established to perpetuate locating the position of the corner:

SET BERNTSEN MONUMENT 3' EAST OF BITUMINOUS PARKING LOT WITH P.S.# 36079 STAMPED IN CAP
27.5 +/- SOUTH OF PARKING LOT CORNER
NAIL & TAG IN 15' ELM, N 50° E, 8.4
NAIL & TAG IN 10' MAPLE, N 50° W, 54.5
NAIL & TAG IN 10' PINE, S 80° W, 90.7
1/2" IRON WHICH IS THE SE CORNER OF LOT 139, EAST HILL # 5, NORTH 29.4

SURVEY &
REMONUMENTATION

MAR 21 1997

COMMISSION



Signed by Michael A. Groat
Surveyor's Michigan License No. 36079

Date 7-16-96

FORM APPROVED BY MICHIGAN STATE BOARD OF PROFESSIONAL SURVEYORS, JAN. 23, 1971

REVISED MAY 14, 1975

REVISED JAN., 1983

REVISED OCT., 1986