

APPROVED

Date 11/25/97 REC
CALHOUN COUNTY
REMONUMENTATION.

CALHOUN COUNTY REMONUMENTATION
LAND CORNER RECORDATION CERTIFICATE
Filing Requirement of Act 74, Mich. P.A. 1970

STATE OF MICHIGAN
CALHOUN COUNTY
RECORDED

1 DEC 97 4:52 P.M.

ANNE B. NORLANDER
CLERK - REGISTER OF DEEDS

LIBER **1980** PAGE **511**

Register of Deeds Stamp & File Number

For corners in
CALHOUN

(County)	Located In:	Corner Code #
MARENGO TOWNSHIP	T <u>2S</u> R <u>5W</u>	<u>K-8</u>
1. Public Land Survey	T <u> </u> R <u> </u>	<u> </u>
	T <u> </u> R <u> </u>	<u> </u>
	T <u> </u> R <u> </u>	<u> </u>
2. Property Controlling in Section	S <u> </u> T <u> </u> R <u> </u>	<u> </u>
	S <u> </u> T <u> </u> R <u> </u>	<u> </u>
3. Miscellaneous Property in Sec.	S <u> </u> T <u> </u> R <u> </u>	<u> </u>
	S <u> </u> T <u> </u> R <u> </u>	<u> </u>

4. Lot No. _____, Recorded Plat _____
5. Private Claims _____

I, MICHAELA GROAT, in a field survey on NOVEMBER 11, 1997 do hereby state that under requirements of P.A. 74, Michigan P.A. of 1970, the corner points mentioned in lines 1 and 2 above were in conformance with regulations and rules therefore as required in the current manual of survey instructions of the United States Department of the Interior, Bureau of Land Management or by a decree of a Court of Law and /or that the corner points mentioned in lines 3, 4 and 5 above were in conformance with the rules of the Michigan Board of Land Surveyors or by a Decree of a Court of Law; established, re-established, monumented, recovered, found as expressed below:

NOTE: Not more than 2 corners, all in the same town and range, may be recorded on this certificate.

	A	B	C	D	E	F	G	H	I	J	K	L	M
1													
2		6		5		4		3		2		1	
3													
4		7		8		9		10		11		12	
5													
6		10		17		16		15		14		13	
7													
8		19		20		21		22		23		24	
9													
10		30		29		28		27		26		25	
11													
12		31		32		33		34		35		36	
13													

A. Description of original monument and accessories and/or subsequent restoration:

ORIGINAL SURVEY BY LUCIUS LYON, DEPUTY SURVEYOR, SET POST, B. OAK, 7", N29°W, 20 LKS., B. OAK, 10", N83°E, 61 LINKS.

J.M. GIFFORD, 1889, FOUND OLD STAKE SET BY "WELLS" IN 1880, FALLS IN INTERSECTION OF FENCES, W. ASH, N17-1/2°E, 127 LKS, BASSWOOD, 12", N14°W, 115 LKS.

M.S.H.D., 1959, 1-3/4" GALVANIZED STAKE, 30" ASH, N11°E, 146', 31" OAK, S5°E, 240.8', 9" HICKORY, S8°W, 203.1', 34" ASH, N7°W, 147'.

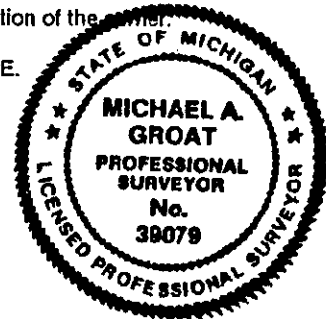
MILTON DEKEYSER, P.S. #12019, IN LCRC DATED FEBRUARY 1, 1973 AND RECORDED IN LIBER 1032 ON PAGE 617, CALLS THE CORNER AS THE MONUMENT BOX ON THE BRIDGE.

B. Description of corner evidence found and/or method applied in restoring or reestablishing corner:

FOUND MONUMENT BOX ON BRIDGE. OPEN THE BOX AND YOU WATCH THE TRAFFIC ON I-94. NO PHYSICAL CORNER IN I-94. ACCEPTED THE LOCATION OF THE MONUMENT BOX AS THE BEST LOCATION OF THE ORIGINAL CORNER.

C. Description of monument for corner and accessories established to perpetuate locating the position of the corner:

SET TWO HARRISON MONUMENTS ON THE EAST EDGE OF THE ROAD. SEE REVERSE SIDE.



Signed by [Signature] Date NOVEMBER 25, 1997

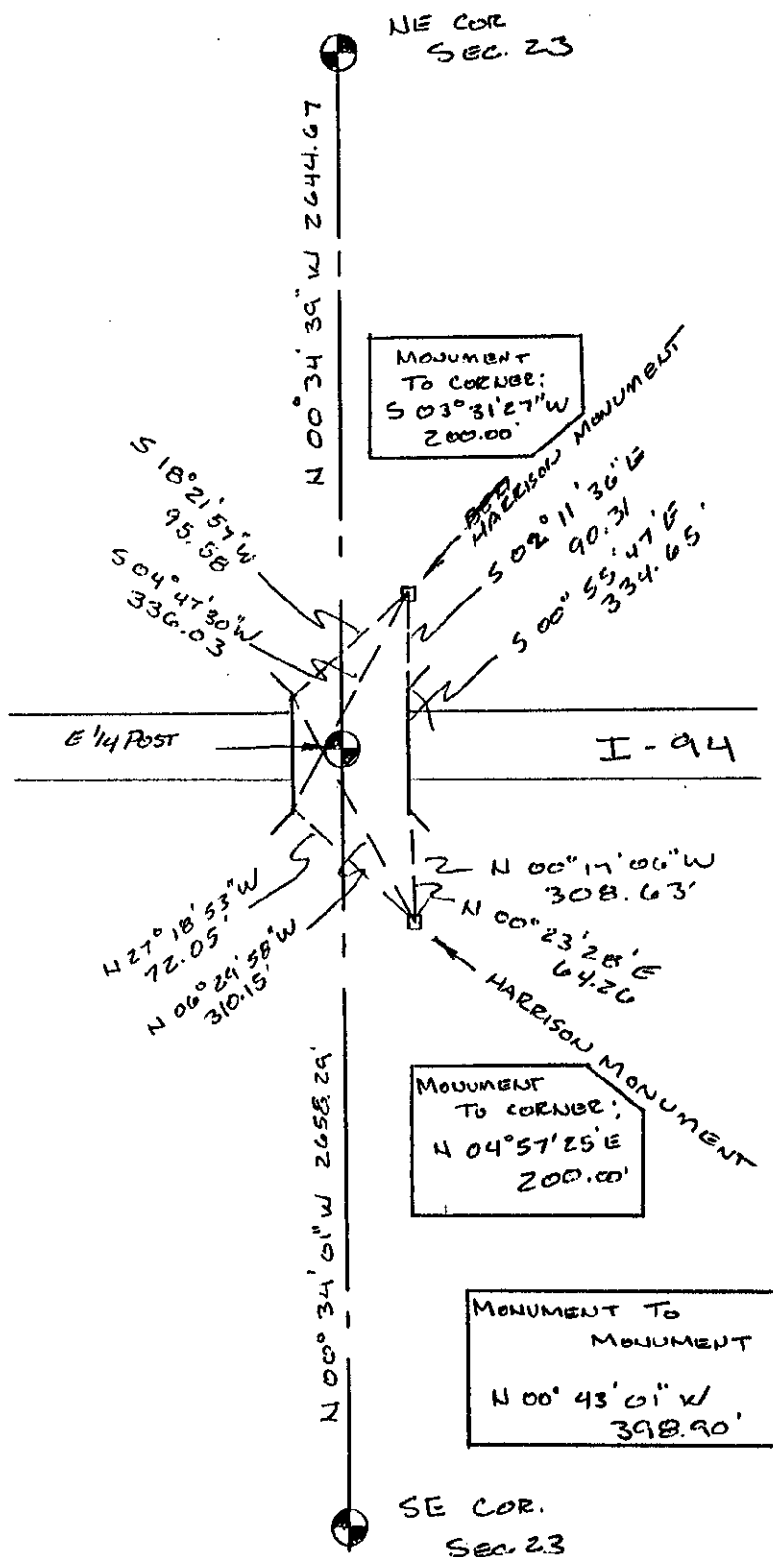
Surveyor's Michigan License No. 39079

SURVEY & REMONUMENTATION

FORM APPROVED BY MICHIGAN STATE BOARD OF PROFESSIONAL SURVEYORS, JAN. 26, 1971
REVISED MAY 14, 1976
REVISED JAN., 1983
REVISED OCT., 1986

APR 07 1998

SECTION



LIBER 1980 PAGE 512

SURVEY & REMONUMENTATION

APR 07 1998

SECTION