

APPROVED

Date 11-12-96
CALHOUN COUNTY
REMONUMENTATION
For corners in

CALHOUN COUNTY REMONUMENTATION
LAND CORNER RECORDATION CERTIFICATE
Filing Requirement of Act 74, Mich. P.A. 1970

STATE OF MICHIGAN
CALHOUN COUNTY
RECORDED

19 NOV 96 1:53 P.M.

ANNE B. NORLANDER
CLERK - REGISTER OF DEEDS

LIBER 1899 PAGE 600

Register of Deeds Stamp & File Number

Calhoun

(County)

Located In:

Corner Code #/

Emmett Twp

- | | | | |
|------------------------------------|-------|-------------|-----|
| 1. Public Land Survey | Sec 4 | T 2 S R 7 W | G-3 |
| | | T R | |
| | | T R | |
| | | T R | |
| 2. Property Controlling in Section | S T R | | |
| | S T R | | |
| 3. Miscellaneous Property in Sec. | S T R | | |
| | S T R | | |

4. Lot No. _____, Recorded Plat _____
5. Private Claims _____

I, Robert R. Carr, in a field survey on November 9, 19 96, do hereby certify that under requirements of P.A. 74, Michigan P.A. of 1970, the corner points mentioned in lines 1 and 2 above were in conformance with regulations and rules therefore as required in the current manual of survey instructions of the United States Department of the Interior, Bureau of Land Management or by a decree of a Court of Law and/or that the corner points mentioned in lines 3, 4 and 5 above were in conformance with the rules of the Michigan Board of Land Surveyors or by a Decree of a Court of Law; established, re-established, monumented, re-monumented, recovered, found as expressed below:

NOTE: Not more than 4 corners, all in the same town and range, may be recorded on this certificate.

A. Description of original monument and accessories and/or subsequent restoration:

G.L.O. Sibley 1836.

Resurvey Hodgeman 1889 found stake by fence post in swamp.

30 lks North of stump of tamarack U.S. bearing tree & set post (tile)

A.H. Chase no date tile with 3" cast iron pipe over

Plat of "Green Acers Extension" Liber 5 page 25.

Plat of "Lone Oak Acres No. 2" Liber 17 page 09.

B. Description of corner evidence found and/or method applied in restoring or reestablishing corner:

Corner in swampy area with no occupation.

Found iron at SE corner of Lot 47 "Lone Oak Acres No. 2" and projected South line of Plat West over monument at SW corner of Plat 1246 feet from SE corner Lot 47 to find general location of corner.

Found remains of stump 12" Elm SE 14.5 feet (A.H. Chase) and stump of 24" Maple S30°W 21.5 feet (A.H. Chase), intersected distances and found 3"x2' solid tile 1 foot below ground over another 3" solid tile, Plat line misses tile 4± to North.

Accepted tile as a true perpetuation of corner.

C. Description of monument for corner and accessories established to perpetuate locating the position of the corner:

Replaced top tile with Berntsen Calhoun County Remonumentation Monument with Carsonite witness post beside.

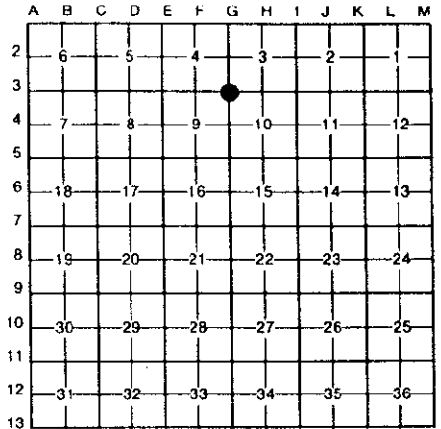
Nail & spotter South side 18" Maple S85°E 71.62 feet.

Nail & spotter Westerly side 20" Maple S44°E 46.95 feet.

Nail & spotter Southerly side 18" Maple S84°E 59.41 feet.

Nail & spotter Northerly side 14" Beech N79°W 188.73 feet.

Nail & spotter Easterly side 16" Maple N32°E 41.75 feet.

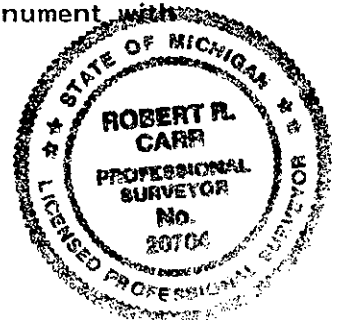


Emmett Township

SURVEY & REMONUMENTATION

MAR 21 1997

COMMISSION



Signed by

Robert R. Carr

Surveyor's Michigan License No.

20704

Date

November 11, 1996