

SURVEY & REMONUMENTATION

MAR 21 1997

APPROVED
Date May 15, 1996
CALHOUN COUNTY REMONUMENTATION

CALHOUN COUNTY **COMMISSION**
LAND CORNER RECORDATION CERTIFICATE
Filing Requirement of Act 74, Mich. P.A. 1970

STATE OF MICHIGAN
CALHOUN COUNTY
RECORDED

7 JUN 96 9:49 A.M.

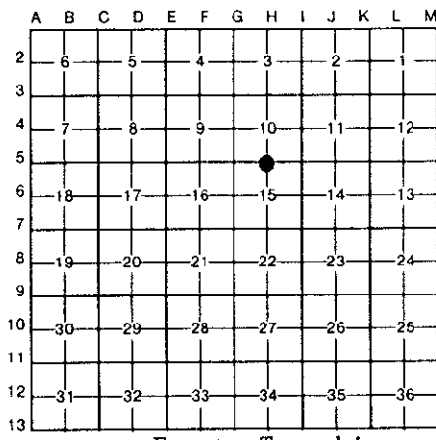
ANNE B. NORLANDER
CLERK - REGISTER OF DEEDS

For corners in

Calhoun <small>(County)</small>	Located In:	Corner Code #	
Emmett Township			
1. Public Land Survey	T <u>2</u> S R <u>7</u> W	H-5	
	T _____ R _____	_____	
	T _____ R _____	_____	
	T _____ R _____	_____	
2. Property Controlling in Section	S _____ T _____ R _____	_____	
	S _____ T _____ R _____	_____	
3. Miscellaneous Property in Sec.	S _____ T _____ R _____	_____	
	S _____ T _____ R _____	_____	
4. Lot No. _____, Recorded Plat _____			
5. Private Claims _____			

Register of Deeds Stamp & File Number

I, William K. Crane in a field survey on May 11, 1996, do hereby certify that under requirements of P.A. 74, Michigan P.A. of 1970, the corner points mentioned in lines 1 and 2 above were in conformance with regulations and rules therefore as required in the current manual of survey instructions of the United States Department of the Interior, Bureau of Land Management or by a decree of a Court of Law and/or that the corner points mentioned in lines 3, 4 and 5 above were in conformance with the rules of the Michigan Board of Land Surveyors or by a Decree of a Court of Law; established, re-established, monumented, re-monumented, recovered, found as expressed below:



NOTE: Not more than 4 corners, all in the same town and range, may be recorded on this certificate.

A. Description of original monument and accessories and/or subsequent restoration:

Original government field notes (S. Sibley 1826):

28" W. Oak S72°W 52 links
9" D.O. N41°E 10 links

Resurvey F. Hodgman 1889:

Set post N72°E, 52 links from stump of W. Oak bearing tree.
12" Hickory S86½°E 53-3/4 links
10" Hickory S34°E 88 links

P.E. Rosendale 9/23/60:

Found 3/4" pipe
12" Hickory N64°W 19.21'
15" Hickory N25°W 44.39'
22" Hickory Due East 38.11'
SW Cor. Hse. WSW 85.8'
10" Hickory N30°W 43.9'
30" Hickory NE 47.6'
SW Cor. Porch NW 101.8'
6" Ash N11°E 25.0'
PP S55°W 31.16'
10" Oak N50°E 39.54'

B. Description of corner evidence found and/or method applied in restoring or reestablishing corner:

Found 3/4" iron pipe in 36" concrete monument, 5.7'± W of centerline of N&S road and the following 1960 Witnesses:

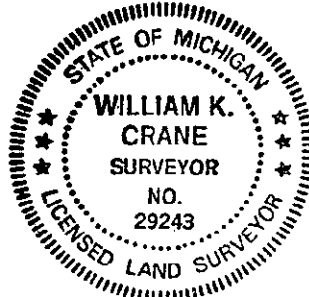
Due East 38.11' 22" Hickory
SW Cor. Hse. WSW 85.8'
SW Cor. Porch NW 101.8'

LIBER 1865 PAGE 707

C. Description of monument for corner and accessories established to perpetuate locating the position of the corner:

Replaced 36" concrete monument containing 3/4" pipe with standard Calhoun County Remonumentation Monument (Bernsten Monument) and Monument Box.

Nail & spotter N64°W 19.55'
(18" Hickory)
Nail & spotter N30°W 44.39'
(24" Hickory)
Concrete Monument East 32.94'
SW Cor. House WSW 85.8'
SW Cor. Porch NW 1.0.8'



This is accepted as the best available evidence of the position of the original corner.

Signed by William K. Crane Date May 14, 1996
Surveyor's Michigan License No. 29243