

REMONUMENTATION

FEB 22 1996

COMMISSION

CALHOUN COUNTY REMONUMENTATION

LAND CORNER RECORDATION CERTIFICATE
Filing Requirement of Act 74, Mich. P.A. 1970

APPROVED
Date Nov. 20 1995
CALHOUN COUNTY
REMONUMENTATION.
STATE OF MICHIGAN
CALHOUN COUNTY
RECORDED

For corners in

Calhoun (County)	Located In:	Corner Code #
City of Battle Creek	T <u>2</u> S R <u>8</u> W	D-3
1. Public Land Survey	T _____ R _____	_____
	T _____ R _____	_____
	T _____ R _____	_____
2. Property Controlling in Section	S _____ T _____ R _____	_____
3. Miscellaneous Property in Sec.	S _____ T _____ R _____	_____
4. Lot No. _____, Recorded Plat _____		
5. Private Claims _____		

4 DEC 95 2:23 P.M.

ANNE B. NORLANDER
CLERK - REGISTER OF DEEDS

Register of Deeds Stamp & File Number

A	B	C	D	E	F	G	H	I	J	K	L	M
2	6	5	4	3	2	1						
3		●										
4	7	8	9	10	11	12						
5												
6	16	17	16	15	14	13						
7												
8	19	20	21	22	23	24						
9												
10	30	29	28	27	26	25						
11												
12	31	32	33	34	35	36						
13												

I, William K. Crane, in a field survey on October 16, 19 95, do hereby certify that under requirements of P.A. 74, Michigan P.A. of 1970, the corner points mentioned in lines 1 and 2 above were in conformance with regulations and rules therefore as required in the current manual of survey instructions of the United States Department of the Interior, Bureau of Land Management or by a decree of a Court of Law and/or that the corner points mentioned in lines 3, 4 and 5 above were in conformance with the rules of the Michigan Board of Land Surveyors or by a Decree of a Court of Law; established, re-established, monumented, re-monumented, recovered, found as expressed below:

NOTE: Not more than 4 corners, all in the same town and range, may be recorded on this certificate.

A. Description of original monument and accessories and/or subsequent restoration:

Original Government Field Notes
(S. Sibley, 1826):

10" W. Oak NW 140 links
8" W. Oak S 21° E 24 links

Re-survey, F. Hodgman, 1889:

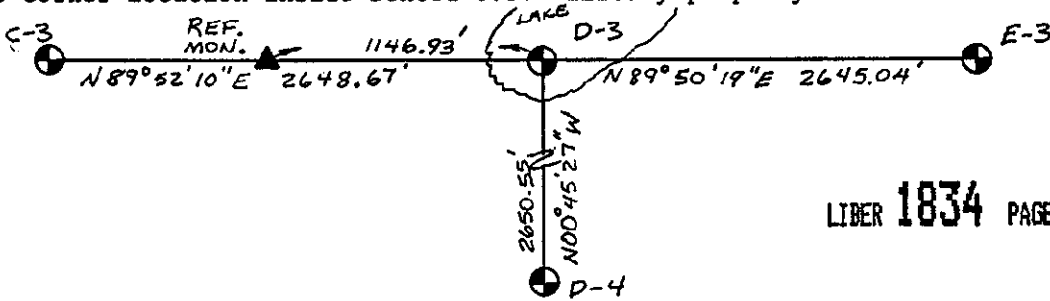
Bearing tree gone. Found old stake hole after running the Section line through and set post.

8" W. Oak S 06° E 46½ links
16" Hickory N 71° E 137½ links

L.C.R.C. recorded in Liber 1583, Page 551, for a State of Michigan brass cap monument at this location. Prior to construction of a man-made lake at this location in 1992, reference monuments were set and a new L.C.R.C. recorded in Liber 1639, Page 712.

B. Description of corner evidence found and/or method applied in restoring or reestablishing corner:

Found iron set in pavement, South 89°52'10" West, 1146.93' from the original corner location per sketch below and from L.C.R.C. recorded in Liber 1639, Page 712. No other reference monuments set due to corner location inside fenced U.S. Military property.

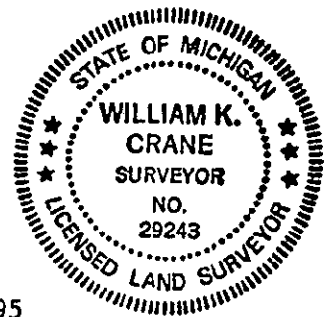


LIBER 1834 PAGE 253

C. Description of monument for corner and accessories established to perpetuate locating the position of the corner:

Replaced capped iron used as reference monument with standard Calhoun County Remonumentation Corner (Bernsten Monument) and monument box.

12" Elm N 20.75'
12" Elm N 30° W 30.26'
24" Walnut S 20° W 27.70'
15" Walnut S 20° E 30.00'



Signed by William K. Crane
Surveyor's Michigan License No. 29243

Date November 20, 1995