

APPROVED

Date 11-12-96

CALHOUN COUNTY REMONUMENTATION.

CALHOUN COUNTY REMONUMENTATION LAND CORNER RECORDATION CERTIFICATE Filing Requirement of Act 74, Mich. P.A. 1970

STATE OF MICHIGAN CALHOUN COUNTY RECORDED

19 NOV 96 2:00 P.M.

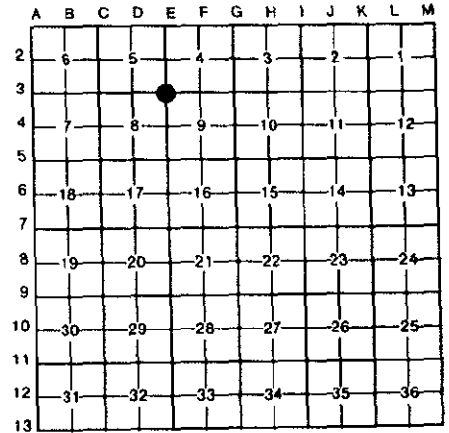
ANNE B. NORLANDER CLERK - REGISTER OF DEEDS

LIBER 1899 PAGE 615

Register of Deeds Stamp & File Number

For corners in

Table with columns: Calhoun (County), Albion Twp., Located In, Corner Code #. Rows include Public Land Survey, Property Controlling in Section, Miscellaneous Property in Sec., Lot No., and Private Claims.



Frederick J. Cutcher, in a field survey on October 28, 1996, do hereby certify that under requirements of P.A. 74, Michigan P.A. of 1970, the corner points mentioned in lines 1 and 2 above were in conformance with regulations and rules therefore as required in the current manual of survey instructions of the United States Department of the Interior...

NOTE: Not more than 4 corners, all in the same town and range, may be recorded on this certificate.

A. Description of original monument and accessories and/or subsequent restoration: Corner common to Sections 4, 5, 8 & 9.

Original Government Survey, February, 1825: W. Oak 9" N 21 1/2° W 1.12 lks.; W. Oak 18" S 29° W 17 lks. (Lyon)

D.H.D. Survey Notes, 12/7/76: R.R. spike; 22" Oak South, 39.84'; 8" Ash N 45° W 38.71'; 16" Ash S 60° W 38.00'; Util. pole North, 30.68'; in centerline pavement & on N/S fence line.

B. Description of corner evidence found and/or method applied in restoring or reestablishing corner:

Found R.R. spike at road surfaces from witnesses. Dug and found 1/2" iron rod and horse shoe in soil pipe 18" below surface.

Five of above references were found

SURVEY & REMONUMENTATION

MAR 21 1997

COMMISSION



C. Description of monument for corner and accessories established to perpetuate locating the position of the corner:

Pushed soil pipe to West and set Bernsten monument in monument box beside and is accepted as a careful and faithful reestablishment of the position of the original corner.

In centerline of E/W road. In line with fence N/S. N.E. corner porch foundation house #25920 S 40° W 90.23'. N.E. corner garage South 81.58'. Nail & spotter East side telephone pole North 30.60'. Nail & spotter East side 10" Pine N 45° W 62.12'.

Signed by Frederick J. Cutcher, Date November 7, 1996, Surveyor's Michigan License No. 24592