

APPROVED

Date 11-12-96  
CALHOUN COUNTY  
REMONUMENTATION.

CALHOUN COUNTY REMONUMENTATION  
LAND CORNER RECORDATION CERTIFICATE  
Filing Requirement of Act 74, Mich. P.A. 1970

STATE OF MICHIGAN  
CALHOUN COUNTY  
RECORDED

19 FEB 97 3:46 P.M.

ANNE B. NORLANDER  
CLERK - REGISTER OF DEEDS

For corners in

Calhoun (County)	Located In:	Corner Code #
Eckford Township		
1. Public Land Survey	T <u>3</u> S R <u>5</u> W	F-11
	T ___ R ___	_____
	T ___ R ___	_____
	T ___ R ___	_____
2. Property Controlling in Section	S ___ T ___ R ___	_____
	S ___ T ___ R ___	_____
3. Miscellaneous Property in Sec.	S ___ T ___ R ___	_____
	S ___ T ___ R ___	_____

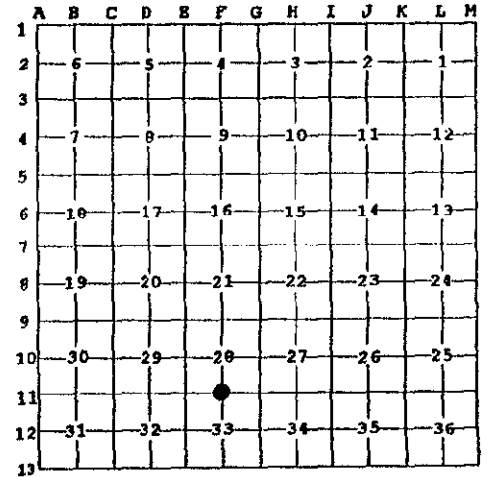
LIBER 1916 PAGE 98

Register of Deeds Stamp & File Number

4. Lot No. \_\_\_\_\_, Recorded Plat \_\_\_\_\_  
5. Private Claims \_\_\_\_\_

I, William K. Crane, in a field survey on November 5, 1996 do hereby state that under requirements of P.A. 74, Michigan P.A. of 1970, the corner points mentioned in lines 1 and 2 above were in conformance with regulations and rules therefore as required in the current manual of survey instructions of the United States Department of the Interior, Bureau of Land Management or by a decree of a Court of Law and for that the corner points mentioned in lines 3, 4 and 5 above were in conformance with the rules of the Michigan Board of Land Surveyors or by a Decree of a Court of Law, established, re-established, monumented, recovered, found as expressed below:

NOTE: Not more than 2 corners, all in the same town and range, may be recorded on this certificate.



A. Description of original monument and accessories and/or subsequent restoration:

Original Government Survey, Lucuis Lyon, 1825:  
26" White Oak S 66° W 31 links  
9" R. Oak S 63° E 5 links

County Surveyor P.A. Courtright, 1895:  
Angular stone with brick.  
18" Y. Oak S 27° E 22 links  
7" Hickory N 46-1/2° E 50-1/2 links'

SURVEY &  
REMONUMENTATION

APR 07 1998

B. Description of corner evidence found and/or method applied in restoring or reestablishing corner:

SECTION

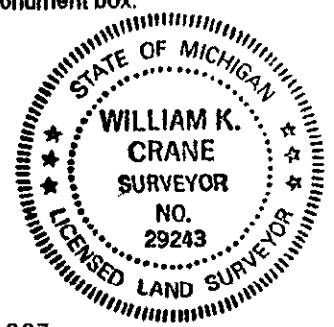
Found 3/4" iron rod 1' North of centerline of East and West road. No witnesses from above remain.

C. Description of monument for corner and accessories established to perpetuate locating the position of the corner:

Replaced 3/4" iron rod with Standard Calhoun County Remonumentation Monument (Bemtsen Monument) in monument box.

Set Nail & spotter	SW side of 12" Cherry	S 40° E	40.51"
Set Nail & spotter	NW side of 16" Oak	S 50° W	41.89'
Set Nail & spotter	NE side of 14" Hickory	N 46° W	43.02'
Set Nail & spotter	W side of 8" Oak	North	31.60'

This is accepted as the best available evidence of the original corner.



Signed by William K. Crane

Date January 31, 1997

William K. Crane, P.S.

Surveyor's Michigan License No. 29243