

APPROVED

Date 11-12-96

CALHOUN COUNTY REMONUMENTATION

CALHOUN COUNTY REMONUMENTATION LAND CORNER RECORDATION CERTIFICATE

STATE OF MICHIGAN CALHOUN COUNTY RECORDED

19 FEB 97 3:47 P.M.

ANNE B. NORLANDER CLERK - REGISTER OF DEEDS

LIBER 1916 PAGE 100

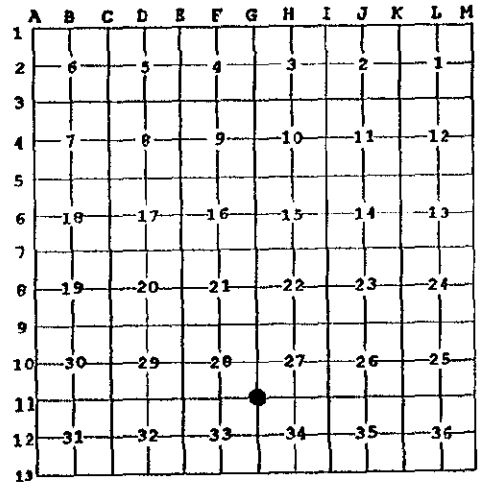
Register of Deeds Stamp & File Number

Table with columns: Calhoun (County), Located In:, Corner Code #. Includes entries for Eckford Township and Public Land Survey.

4. Lot No. , Recorded Plat
5. Private Claims

I, William K. Crane, in a field survey on November 5, 1996 do hereby state that under requirements of P.A. 74, Michigan P.A. of 1970, the corner points mentioned in lines 1 and 2 above were in conformance with regulations and rules...

NOTE: Not more than 2 corners, all in the same town and range, may be recorded on this certificate.



A. Description of original monument and accessories and/or subsequent restoration:

Original Government Survey, Lucuis Lyon, 1825:
16" AspenS 33° E.....20 links
9" W. Oak.....N 47° E.....51 links

Set by County Surveyor Lewis in 1882, found by P.A. Courtright in 1895, an iron and long stone.
18" Hickory..... S 40° W.....36-1/2 links
20" Cherry.....South 58-1/2 links

B. Description of corner evidence found and/or method applied in restoring or reestablishing corner:

Found railroad spike on centerline of East and West road in line with fences North and South.

C. Description of monument for corner and accessories established to perpetuate locating the position of the corner:

Replaced railroad spike with Standard Calhoun County Remonumentation Monument (Bemtsen Monument) in monument box.

- Set Nail & spotter.....South side of 20" Oak.....N 40° E.....31.34'
Set Nail & spotter.....East side of 20" Cherry.....South.....32.82'
Set Nail & spotter.....SW side of 6" Hickory.....N 34° W..... 30.66'
Set Nail & spotter.....North side of 24" Oak.....S 54° W.....42.94'

This is accepted as the best available evidence of the position of the original corner.

Signed by William K. Crane
William K. Crane, P.S.

Surveyor's Michigan License No. 29243

Date January 31, 1997

SURVEY & REMONUMENTATION

APR 07 1998

SECTION

