

**APPROVED**  
 Date 3-20-94  
**CALHOUN COUNTY**  
**REMONUMENTATION.**

**CALHOUN COUNTY REMONUMENTATION**  
**LAND CORNER RECORDATION CERTIFICATE**  
 Filing Requirement of Act 74, Mich. P.A. 1970

For corners in

CALHOUN COUNTY  
 (County)

Located In: NEWTON TWP Corner Code ##

- |                                       |                                      |                        |
|---------------------------------------|--------------------------------------|------------------------|
| 1. Public Land Survey                 | T <u>3S</u> R <u>7W</u> E- <u>10</u> |                        |
|                                       | T _____ R _____                      |                        |
|                                       | T _____ R _____                      | <u>SURVEY &amp;</u>    |
|                                       | T _____ R _____                      | <u>REMONUMENTATION</u> |
| 2. Property Controlling in Section    | S _____ T _____ R _____              |                        |
|                                       | S _____ T _____ R _____              |                        |
| 3. Miscellaneous Property in Sec.     | S _____ T _____ R _____              | <u>OCT 27 1994</u>     |
|                                       | S _____ T _____ R _____              |                        |
| 4. Lot No. _____, Recorded Plat _____ |                                      | <b>COMMISSION</b>      |
| 5. Private Claims _____               |                                      |                        |

REGISTERED  
 APR 17 9 57 AM '94  
 CALHOUN COUNTY REGISTER  
 ANNE B. NORLANDER  
 Register of Deeds Stamp & File Number

I, DANIEL M. RYAN, in a field survey on MARCH 5, 19 94, do hereby certify that under requirements of P.A. 74, Michigan P.A. of 1970, the corner points mentioned in lines 1 and 2 above were in conformance with regulations and rules therefore as required in the current manual of survey instructions of the United States Department of the Interior, Bureau of Land Management or by a decree of a Court of Law and/or that the corner points mentioned in lines 3, 4 and 5 above were in conformance with the rules of the Michigan Board of Land Surveyors or by a Decree of a Court of Law; established, re-established, monumented, re-monumented, recovered, found as expressed below:

**NOTE: Not more than 4 corners, all in the same town and range, may be recorded on this certificate.**

EAST 1/4 CORNER SECTION 29, T3S,R7W

A. Description of original monument and accessories and/or subsequent restoration:

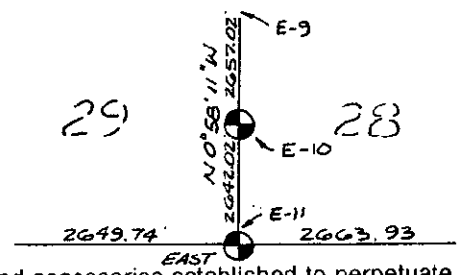
|                                |  |
|--------------------------------|--|
| <u>GLO-SIBLEY 1826</u>         | <u>RESURVEY-UNKNOWN</u>                |
| <u>SET POST</u>                | <u>CHAINED OUT AND FD. LARGE STONE</u> |
| <u>W.OAK 12" N81°W 261 LKS</u> | <u>ACCEPTED THIS AS CORNER.</u>        |
| <u>W.OAK 16" S55°E 94 LKS</u>  | <u>W. ASH N38°E 393 LKS</u>            |

UNKNOWN CORNER CARD  
CORNER IS A FENCE POST  
 THIS WAS VERIFIED BY D. DAVIS AS HAVING BEEN USED FOR SOME PIPELINE LOCATIONS: NO STAKES WERE TIED TO THIS CORNER AND NO EVIDENCE EXISTS.

| A  | B  | C  | D  | E  | F  | G  | H | I | J | K | L | M |
|----|----|----|----|----|----|----|---|---|---|---|---|---|
| 2  | 6  | 5  | 4  | 3  | 2  | 1  |   |   |   |   |   |   |
| 3  |    |    |    |    |    |    |   |   |   |   |   |   |
| 4  | 7  | 8  | 9  | 10 | 11 | 12 |   |   |   |   |   |   |
| 5  |    |    |    |    |    |    |   |   |   |   |   |   |
| 6  | 18 | 17 | 16 | 15 | 14 | 13 |   |   |   |   |   |   |
| 7  |    |    |    |    |    |    |   |   |   |   |   |   |
| 8  | 19 | 20 | 21 | 22 | 23 | 24 |   |   |   |   |   |   |
| 9  |    |    |    |    |    |    |   |   |   |   |   |   |
| 10 | 30 | 29 | 28 | 27 | 26 | 25 |   |   |   |   |   |   |
| 11 |    |    |    |    |    |    |   |   |   |   |   |   |
| 12 | 31 | 32 | 33 | 34 | 35 | 36 |   |   |   |   |   |   |
| 13 |    |    |    |    |    |    |   |   |   |   |   |   |

B. Description of corner evidence found and/or method applied in restoring or reestablishing corner:

LOCATION OF THIS CORNER FALLS IN A PLOWED FIELD AND THE FENCE HAS LONG SINCE BEEN REMOVED. WE SPOKE TO THE LANDOWNER AND HE REMEMBERED THE POST IN QUESTION ABOVE, BUT HAD REMOVED IT SOME TIME AGO. WE RE-SET THIS CORNER BY USING A SURVEY BY DON DAVIS, PS # 17617, RECORDED IN LIBER 1041 ON PAGE 21, WHICH REFERENCES THE EAST WEST 1/4 LINE. NO WITNESS ACCESSORIES ARE READILY AVAILABLE (within a distance that could be used for location). REFER TO SKETCH BELOW.

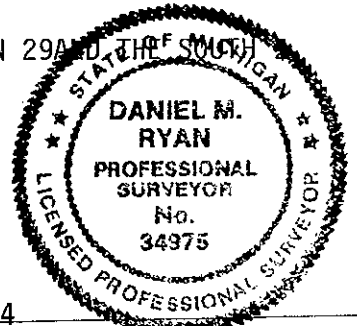


LIBER 1736 PAGE 774

C. Description of monument for corner and accessories established to perpetuate locating the position of the corner:

SET STANDARD CALHOUN COUNTY MONUMENT IN PLOWED FIELD 1.5 FEET BELOW THE SURFACE OF THE FIELD AND STAMPED LICENSE NUMBER 34975 AND THE APPROPRIATE SECTION REFERENCE IN THE TOP THEREOF.

WITNESSED TO THE SOUTHEAST CORNER AND THE NORTHWEST CORNER OF SECTION 29 AND THE SOUTHWEST CORNERS OF SECTIONS 28 & 29.



Signed by Daniel M. Ryan  
 Daniel M. Ryan  
 Surveyor's Michigan License No. 34975

Date MARCH 16, 1994