

APPROVED

Date 2-2-94
CALHOUN COUNTY
REMONUMENTATION

1781 675
SUPERSEDED BY LIBER 1780 PAGE 627

CALHOUN COUNTY REMONUMENTATION
LAND CORNER RECORDATION CERTIFICATE
Filing Requirement of Act 74, Mich. P.A. 1970

For corners in
CALHOUN
(County)

Located In:

Corner Code =#

- 1. Public Land Survey T 3 S R 7 W
- 2. Property Controlling S T R
- 3. Miscellaneous S T R
- 4. Lot No. _____, Recorded Plat _____
- 5. Private Claims _____

G-10
does not exist -
superseded by
Liber 1781, Page 675
Liber 1780, Page 627

CLERK-REGISTER
CALHOUN COUNTY, MICH.
ANNE B. NORLANDER

FEB 4 3 12 PM 94

RECORDED

Register of Deeds Stamp & File Number

	A	B	C	D	E	F	G	H	I	J	K	L	M
2	6	5	4	3	2	1							
3													
4	7	8	9	10	11	12							
5													
6	18	17	16	15	14	13							
7													
8	19	20	21	22	23	24							
9													
10	30	29	28	27	26	25							
11													
12	31	32	33	34	35	36							
13													

I, Michael A. Groat in a field survey on January 1994
do hereby certify that under requirements of P.A. 74, Michigan P.A. of 1970, the corner points mentioned in lines 1 and 2 above were in conformance with regulations and rules therefore as required in the current manual of survey instructions of the United States Department of the Interior, Bureau of Land Management or by a decree of a Court of Law and/or that the corner points mentioned in lines 3, 4 and 5 above were in conformance with the rules of the Michigan Board of Land Surveyors or by a Decree of a Court of Law; established, re-established, monumented, re-monumented, recovered, found as expressed below:

NOTE: Not more than 4 corners, all in the same town and range, may be recorded on this certificate.

A. Description of original monument and accessories and/or subsequent restoration:

Section corner falls in Lee Lake

B. Description of corner evidence found and/or method applied in restoring or reestablishing corner:

Traversed between G-9 and G-11 and set witness corners on section line on North and South shores of lake.

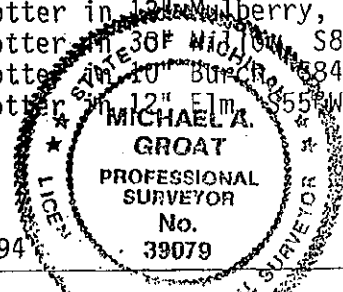
C. Description of monument for corner and accessories established to perpetuate locating the position of the corner:

Set Berntsen monuments 231' North of G-11 and 1629.4' South of G-9 on Section line. Stamped license # 39079 in brass caps.

Witnesses: South shore
Nail and spotter in 6" Cherry, N50°E, 1.7'
Nail and spotter in 14" Oak, S70°W, 32.7'
Nail and spotter in 6" Oak, S10°E, 16.6'
231' North of Southwest corner of Sec. 27

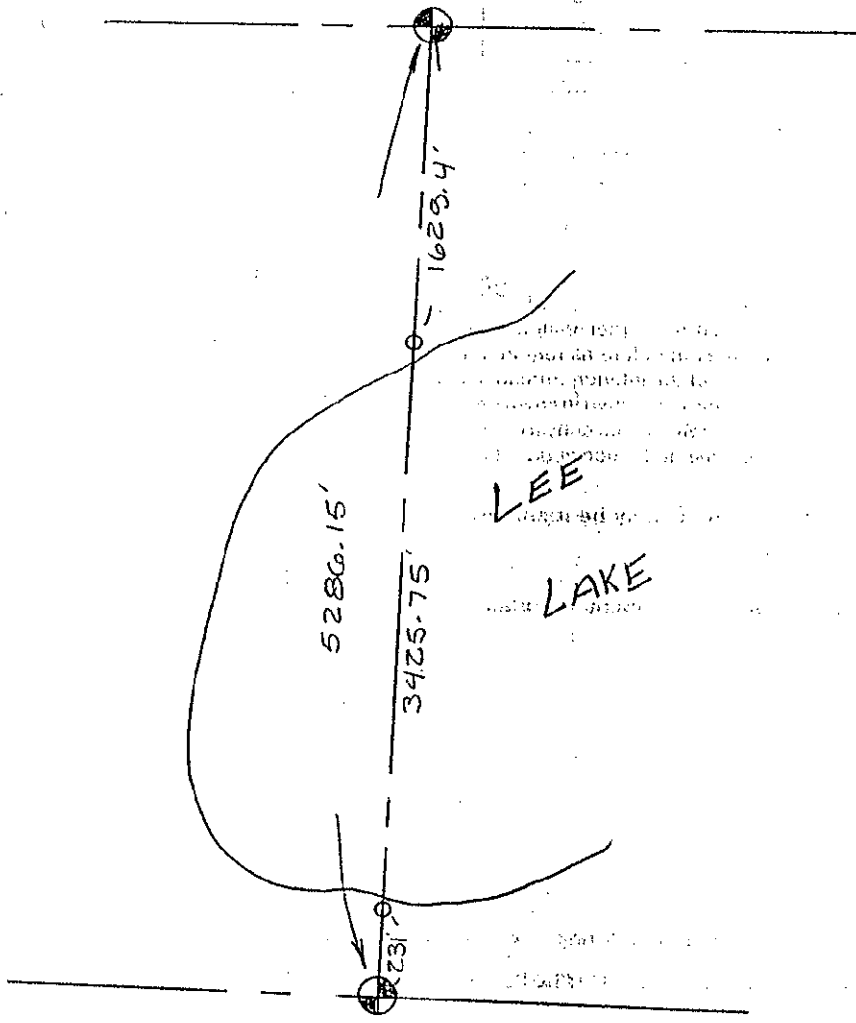
North shore
Nail and spotter in 12" Mulberry, North, 61.8'
Nail and spotter in 30" Wild Rose, S86°E, 61.2'
Nail and spotter in 10" Bur Oak, S84°W, 99.5'
Nail and spotter in 12" Elm, S55°W, 91.4'

LIBER 1730 PAGE 837



Signed by Michael A. Groat
Surveyor's Michigan License No. 39079

Date 2-2-94



U.S. DEPARTMENT OF THE INTERIOR
BUREAU OF LAND MANAGEMENT

1150
1151
1152
1153

060