

1993

COMMISSION

CALHOUN COUNTY

REMONUMENTATION

LAND CORNER RECORDATION CERTIFICATE

Filing Requirement of Act 74, Mich. P.A. 1970

For corners in CALHOUN (County)

Located In:	Corner Code #
T 3 S R 8W	G-6
T R	
T R	
T R	
T R	
S T R	
S T R	
S T R	
S T R	

- 1. Public Land Survey
- 2. Property Controlling in Section
- 3. Miscellaneous Property in Sec.

RECORDED

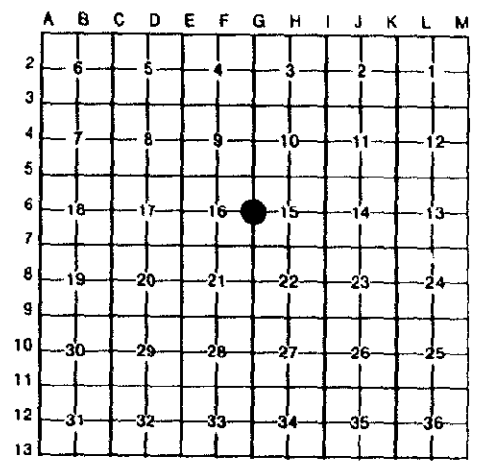
SEP 1 10 32 AM '93

CLERK-REGISTER
CALHOUN COUNTY, MICH.
ANNIE B. NORLANDER

Register of Deeds Stamp & File Number

- 4. Lot No. _____, Recorded Plat _____
- 5. Private Claims _____

I, DONALD J. DAVIS, in a field survey on JULY 22, 1993, do hereby certify that under requirements of P.A. 74, Michigan P.A. of 1970, the corner points mentioned in lines 1 and 2 above were in conformance with regulations and rules therefore as required in the current manual of survey instructions of the United States Department of the Interior, Bureau of Land Management or by a decree of a Court of Law and/or that the corner points mentioned in lines 3, 4 and 5 above were in conformance with the rules of the Michigan Board of Land Surveyors or by a Decree of a Court of Law; established, re-established, monumented, re-monumented, recovered, found as expressed below:



NOTE: Not more than 4 corners, all in the same town and range, may be recorded on this certificate.

A. Description of original monument and accessories and/or subsequent restoration:

TILE SET IN RESURVEY OF 1885.

11" RED OAK N 25° W 21½ LINKS.

17" WHITE OAK S 24° E 35½ LINKS.

B. Description of corner evidence found and/or method applied in restoring or reestablishing corner:

FOUND TILE WITH ROCKS AROUND.

ACCEPTED THIS CORNER AS TRUE CORNER.

C. Description of monument for corner and accessories established to perpetuate locating the position of the corner:

SET BERNTSEN STAINLESS STEEL MONUMENT WITH BRONZE CAP 1 FOOT EAST AND 4 FEET SOUTH OF FENCE INTERSECTION.

30" OAK S 10° E 3.42' NAIL & SPOTTER.

12" RED OAK NORTH 20.03' NAIL & SPOTTER.

30" WHITE OAK S 80° E 13.90' NAIL & SPOTTER.

24" CHERRY WEST 23.00' NAIL & SPOTTER.



Signed by Donald J. Davis
Surveyor's Michigan License No. 17617

Date August 12, 1993