

SURVEY &  
REMONUMENTATION

1993

COMMISSION

CALHOUN COUNTY REMONUMENTATION

LAND CORNER RECORDATION CERTIFICATE  
Filing Requirement of Act 74, Mich. P.A. 1970

RECORDED

Nov 18 2 22 PM '93

CLERK-REGISTER  
CALHOUN COUNTY, MICH.  
ANNE B. NORLANDER

For corners in  
Calhoun

(County)

Located In:

Corner Code #

- |                                       |                           |            |
|---------------------------------------|---------------------------|------------|
| 1. Public Land Survey                 | T <u>4S.</u> R <u>4W.</u> | <u>B-3</u> |
|                                       | T _____ R _____           | _____      |
|                                       | T _____ R _____           | _____      |
|                                       | T _____ R _____           | _____      |
| 2. Property Controlling<br>in Section | S _____ T _____ R _____   | _____      |
|                                       | S _____ T _____ R _____   | _____      |
| 3. Miscellaneous<br>Property in Sec.  | S _____ T _____ R _____   | _____      |
|                                       | S _____ T _____ R _____   | _____      |
| 4. Lot No. _____, Recorded Plat _____ |                           |            |
| 5. Private Claims _____               |                           |            |

Register of Deeds Stamp & File Number

	A	B	C	D	E	F	G	H	I	J	K	L	M
2	6	5	4	3	2	1							
3	⊙												
4	7	8	9	10	11	12							
5													
6	18	17	16	15	14	13							
7													
8	19	20	21	22	23	24							
9													
10	30	29	28	27	26	25							
11													
12	31	32	33	34	35	36							
13													

Frederick J.

Cutcher

I, Frederick J. Cutcher, in a field survey on November 8, 1993, do hereby certify that under requirements of P.A. 74, Michigan P.A. of 1970, the corner points mentioned in lines 1 and 2 above were in conformance with regulations and rules therefore as required in the current manual of survey instructions of the United States Department of the Interior, Bureau of Land Management or by a decree of a Court of Law and/or that the corner points mentioned in lines 3, 4 and 5 above were in conformance with the rules of the Michigan Board of Land Surveyors or by a Decree of a Court of Law; established, re-established, monumented, re-monumented, recovered, found as expressed below:

**NOTE: Not more than 4 corners, all in the same town and range, may be recorded on this certificate.**

A. Description of original monument and accessories and/or subsequent restoration:  
CORNER COMMON TO SEC. 6 & 7, T4S, R4W, HOMER TWP.

A.H. Chase 1939: Iron rod in ditch 800' S. of S.W. cor. Jim McCully; 872' S. of mon. on S. line of M-60; point relocated by A.H.C. from Gov. witness tree; 934' S. of centerline M-60; 1183.7' S. of spike at int. of N & S 1/4 line w/centerline Main St.

B. Description of corner evidence found and/or method applied in restoring or reestablishing corner:

On Mar. 19, 1993 I traversed to this corner. I found an iron beneath 8" of ice and 18" of water. This corner is now in the north edge of Homer Lake. There are no fences or nearby witnesses available. The monument on the S. line of M-60 is gone.

I set a Bernsten stainless steel marker with brass cap 300.00' East of 1/4 post on S. line of Sec. 6 as a reference corner.

LIBER 1716 PAGE 445

C. Description of monument for corner and accessories established to perpetuate locating the position of the corner:  
Witnesses to Bernsten stainless steel marker with brass cap set as reference corner:

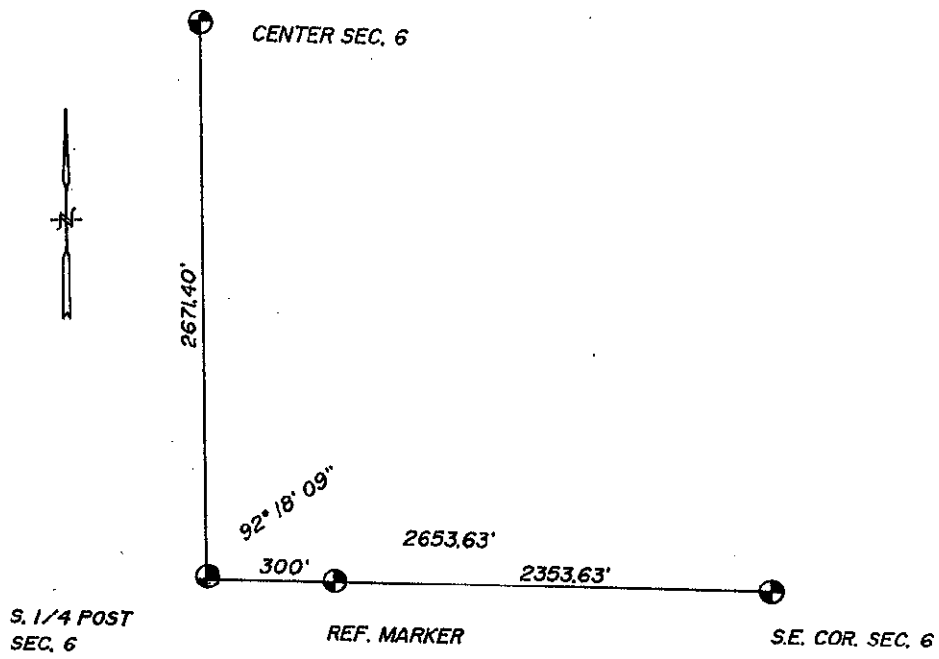
- At bottom edge of bank
  - Nail & spotter in 18" Maple North 46.0'
  - Nail & spotter in 6" Hickory N. 45° E. 8.04'
  - Nail & spotter in 10" B. Oak N. 47° W. 40.27'
  - Nail & spotter in 6" Oak S. 24° E. 8.12'
- See sketch on back of this sheet



Signed by Frederick J. Cutcher

Date November 12, 1993

Surveyor's Michigan License No. 24592



1716/445-A