

MAR 30 1999

APPROVED

Date 9-16-98 *RLC*
CALHOUN COUNTY
REMONUMENTATION.

CALHOUN COUNTY REMONUMENTATION
LAND CORNER RECORDATION CERTIFICATE
Filing Requirement of Act 74, Mich. P.A. 1970

STATE OF MICHIGAN
CALHOUN COUNTY
RECORDED

For corners in

<u>CALHOUN</u> (County)	Located In:	Corner Code #
ATHENS TOWNSHIP	T <u>4S</u> R <u>8W</u>	<u>G-5</u>
1. Public Land Survey	T _____ R _____	_____
	T _____ R _____	_____
	T _____ R _____	_____
2. Property Controlling in Section	S _____ T _____ R _____	_____
3. Miscellaneous	S _____ T _____ R _____	_____
Property in Sec.	S _____ T _____ R _____	_____

25 SEP 1998 2:29:42 PM

ANNE B. NORLANDER
CLERK - REGISTER OF DEEDS
LIBER **2062** PAGE **593**

Register of Deeds Stamp & File Number

4. Lot No. _____, Recorded Plat _____
5. Private Claims _____

I, ROBERT R. CARR, in a field survey on SEPTEMBER 4, 1998 do hereby state that under requirements of P.A. 74, Michigan P.A. of 1970, the corner points mentioned in lines 1 and 2 above were in conformance with regulations and rules therefore as required in the current manual of survey instructions of the United States Department of the Interior, Bureau of Land Management or by a decree of a Court of Law and /or that the corner points mentioned in lines 3, 4 and 5 above were in conformance with the rules of the Michigan Board of Land Surveyors or by a Decree of a Court of Law; established, re-established, monumented, recovered, found as expressed below:

NOTE: Not more than 2 corners, all in the same town and range, may be recorded on this certificate.

CORNER COMMON TO SECTIONS 9, 10, 15 & 16

A. Description of original monument and accessories and/or subsequent restoration:

ROBERT CLARK JR., D.S. 1826 ESTABLISHED LOCATION OF CORNER BUT DID NOT SET STAKE, NOTES SAY IN CREEK AND INACCESSIBLE

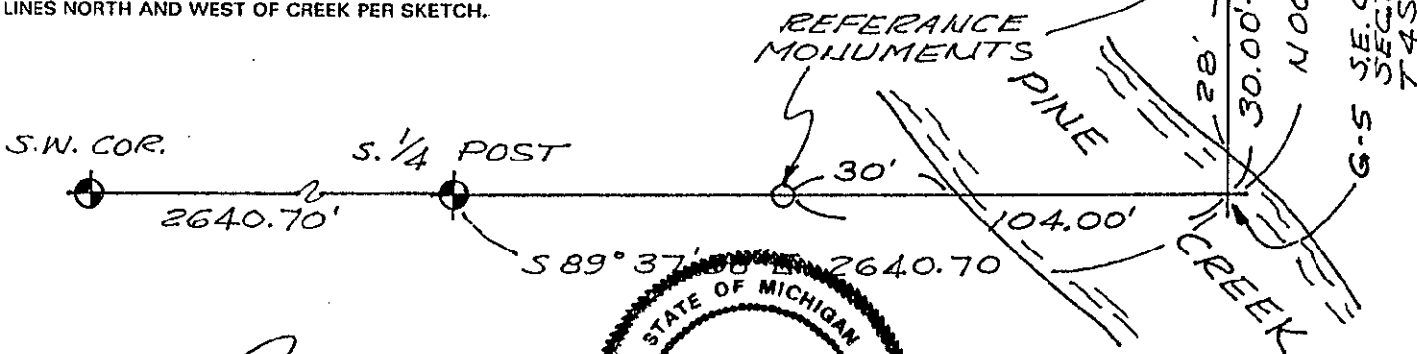
F.A. COURTRIGHT, RESURVEY 1896, NOTES RECITE G.L.O. NOTES, DID NOT LOCATE CORNER POSITION.

B. Description of corner evidence found and/or method applied in restoring or reestablishing corner:

IN CONJUNCTION WITH A SURVEY OF LAND IN THE SOUTHEAST 1/4 OF SECTION 9 MADE IN 1997, I ESTABLISHED THE LOCATION OF THE SOUTHEAST CORNER OF SECTION 9 BY PROJECTING SOUTH LINE OF THE SOUTHWEST 1/4 EAST FROM THE SOUTH 1/4 POST THE SAME DISTANCE AS MEASURED FROM THE SOUTHWEST CORNER TO THE SOUTH 1/4 POST (2640.70 FEET). THIS LOCATION FALLS IN PINE CREEK AS CALLED FOR IN THE G.L.O. NOTES AND IS ACCEPTED AS A TRUE REESTABLISHMENT OF THE ORIGINAL LOCATION.

C. Description of monument for corner and accessories established to perpetuate locating the position of the corner:

SET BERNTSEN REMONUMENTATION MONUMENTS AS REFERENCE MONUMENTS ON SECTION LINES NORTH AND WEST OF CREEK PER SKETCH.



Signed by [Signature] Date SEPTEMBER 16, 1998

Surveyor's Michigan License No. ROBERT R. CARR 20704

