

Ratified by Peer Group

In Accordance With P.A. 345

Chairman Dale C. Keach

Date October 5, 1995

For corners in Porter Township

CASS COUNTY REMONUMENTATION

LAND CORNER RECORDATION CERTIFICATE

Filing Requirement of Act 74, Mich. P.A. 1970

STATE OF MICHIGAN
COUNTY OF CASS
Recorded

12-01-1995 10:09:36

Ann L. Simmons
REGISTER OF DEEDS

Liber 00003 Page 0015

Register of Deeds Stamp & File Number

Cass
(County)

Located in:

Corner Code #

- 1. Public Land Survey T7S R 13W M-11
- 2. Property Controlling in Section S T R
- 3. Miscellaneous Property in Sec. S T R

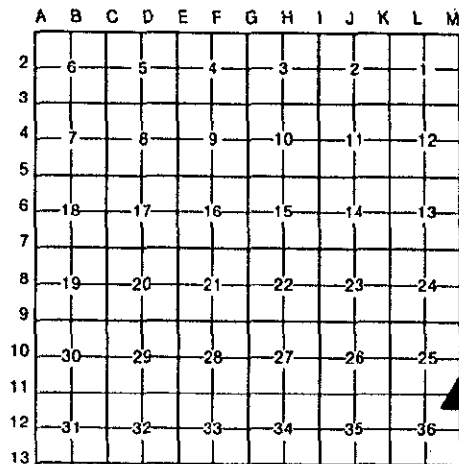
4. Lot No. _____, Recorded Plat _____ MAR 27 1996

5. Private Claims _____

COMMISSION

I, Christian F. Marbach, in a field survey on November 14, 1995, do hereby certify that under requirements of P.A. 74, Michigan P.A. of 1970, the corner points mentioned in lines 1 and 2 above were in conformance with regulations and rules therefore as required in the current manual of survey instructions of the United States Department of the Interior, Bureau of Land Management or by a decree of a Court of Law and/or that the corner points mentioned in lines 3, 4 and 5 above were in conformance with the rules of the Michigan Board of Land Surveyors or by a Decree of a Court of Law; established, re-established, monumented, re-monumented, recovered, found as expressed below:

NOTE: Not more than 4 corners, all in the same town and range, may be recorded on this certificate.



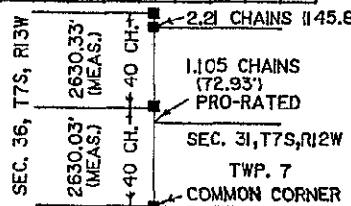
A. Description of original monument and accessories and/or subsequent restoration:

Original Monument: Set post corner to Sections 25 and 36, (Britain, 1828)

Accessories: 18" Beech N 67 2/3° W 14 Links
16" Sugar Maple S 13 1/2° W 55 Links

Subsequent Restoration: None found in records

Note: Posts were set in original survey of Section 31, T7S, R12W (immediately East) by Britain, 1828. (see drawing)



B. Description of corner evidence found and/or method applied in restoring or reestablishing corner:

Evidence Found: Broken down fence to West

- A. SE cor. Sec. 36, T7S, R13W, "M-13", found stone as per references of Rahilly (1-13-83, Liber 2, Page 268).
- B. Barbed wire fence found North & South
- C. NW cor. Sec. 31, T7S, R12W, "A-11", found fence post & fence to East
- D. N 1/2 cor. Sec. 31, T7S, R12W, "B-11", found stone

Held line A-B, Line C-D

Establish intersection of lines as NW cor. Sec. 31, T7S, R12W.

Establish NE cor. Sec. 36, T7S, R13W, 2.21 chains (145.86') North of NW cor. Sec. 31, T7S, R12W (as per original notes, Britain, 1828).

C. Description of monument for corner and accessories established to perpetuate locating the position of the corner:

Monument: Concrete monument (36" long)/rebar with aluminum tablet, 0.2' above ground stamped "Cass County Remonumentation".

- Witnesses:
- N 30° E 22.87' P.K. Nail with bottle cap set 0.5' high SE side of 8" White Oak.
 - S 75° E 20.70' P.K. Nail with bottle cap set 1' high in South side of 6" White Oak.
 - S 45° W 12.77' P.K. Nail with bottle cap set 1' high in North side of 12" Ash.
 - N 75° W 5.38' P.K. Nail with bottle cap set 1' high in NE side 12" Ash.
 - N 45° W 12.52' P.K. Nail with bottle cap set 1' high in South side 12" Hackberry.

Monument set +/- 0.4' West of North-South barbed wire fence.

And is accepted as the best available evidence of the position of the original corner.

signed by Chris F. Marbach

Date 11-27-95

Surveyor's Michigan License No. 37280

