

**SURVEY &
REMONUMENTATION**

APR 26 1995

STATE OF MICHIGAN
CASS COUNTY
REGISTERED

LAND CORNER RECORDATION CERTIFICATE

Filing Requirement of Act 74, Mich. P.A. 1970

1994 DEC 29 PM 4 23

COMMISSION

CASS COUNTY REMONUMENTATION

For corners in

CASS

(County)

Located In:

Corner Code #

1. Public Land Survey SE Corn. SEC. 16	T	7S	R	15W	G-7
	T		R		
	T		R		
	T		R		
2. Property Controlling in Section	S		T	R	
	S		T	R	
3. Miscellaneous Property in Sec.	S		T	R	
	S		T	R	

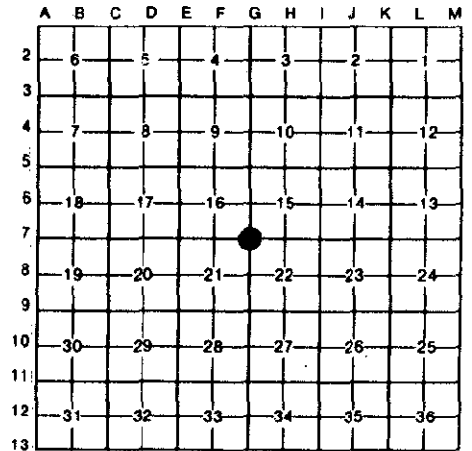
Ann L. Simmons
CLERK/REGISTER

LIBER 2 PAGE 417

Register of Deeds Stamp & File Number

Validated by Peer Group
In Accordance With P.A. 345
Chairman Dale Kesler
Date Dec. 22, 1994

- 4. Lot No. _____, Recorded Plat _____
- 5. Private Claims _____



I, Dale L. Kesler, in a field survey on December 15, 1994, do hereby certify that under requirements of P.A. 74, Michigan P.A. of 1970, the corner points mentioned in lines 1 and 2 above were in conformance with regulations and rules therefore as required in the current manual of survey instructions of the United States Department of the Interior, Bureau of Land Management or by a decree of a Court of Law and/or that the corner points mentioned in lines 3, 4 and 5 above were in conformance with the rules of the Michigan Board of Land Surveyors or by a Decree of a Court of Law; established, re-established, monumented, re-monumented, recovered, found as expressed below:

NOTE: Not more than 4 corners, all in the same town and range, may be recorded on this certificate.

A. Description of original monument and accessories and/or subsequent restoration:

- 1828 - William Brookfield - Set wood post, 10" Yellow Oak - West 83 1/2° West.7 Chains, 8" Yellow Oak - North 13 1/2° West .9 Chains
- April 1876 - Amos Smith - Set stone over White oak post.
- Sept. 1966 - H.D. Peirce - Found steel shaft with 5 1/2" Dia. plate on top - Power pole - North 40° West 61.10' - Fence corner 6 x 6 - South 45° East - 41.35' 16" Hickory tree - South 45° West - 71.60'
- May 1971 - H. Donald Peirce - Found steel shaft - Power pole - North 40° West - 61.1' 16" Hickory tree - South 45° West - 71.6'
- Nov. 1972 - Michiana Surveyors - Found axle shaft in Monument box.

(over)

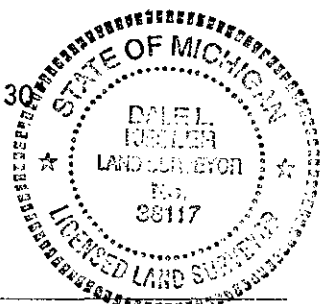
B. Description of corner evidence found and/or method applied in restoring or reestablishing corner:

Found axle shaft 4.5' below the surface in monument box at the Southeast Corner of Section 16, T 7 S, R 15 W. Accepted axle shaft as best evidence of corner.

C. Description of monument for corner and accessories established to perpetuate locating the position of the corner:

Set 3/4" standard 2' iron pipe with aluminum cap over axle shaft and is accepted as a careful and faithful perpetuation of the original corner.

- Set nail with washer North side in 12" Elm - S. 46° 46' W. - 69.70'
- Set PK nail with washer East side in Power pole - N. 40° W. - 61.10'
- ☉ Telephone riser - S. 52° 31' E. - 37.20'
- Set nail with washer West side in 8" Pine tree - S. 28° 21' E. - 74.30'



Signed by Dale Kesler

Date December 29, 1994

Surveyor's Michigan License No. 38117

A. Continued -

Nov. 1973 - Michiana Surveyors - Found axle shaft in Monument box

July 1974 - Michiana Surveyors - Found axle shaft in Monument box

Sept. 1975 - H. D. Peirce - Recorded corner, Liber 1, Page 417

Steel shaft in monument box - Power pole - North 40° West - 61.1'

16" Hickorytree - South 45° West - 71.6'

July 1978 - H. D. Peirce - Found 1" pipe 4' long over post, Set standard Monument in Monument box.