

SURVEY & REMONUMENTATION

APR 26 1995

COMMISSION

LAND CORNER RECORDATION CERTIFICATE

Filing Requirement of Act 74, Mich. P.A. 1970

CASS COUNTY REMONUMENTATION

STATE OF MICHIGAN
CASS COUNTY
RECEIVED FOR RECORD

1994 NOV 8 PM 2 54

For corners in

CASS

(County)

Located In:

Corner Code #

1. Public Land Survey

T 8 R 14

G4

T R

T R

T R

2. Property Controlling in Section

S T R

S T R

3. Miscellaneous Property in Sec.

S T R

S T R

Ann L. Simmons
CLERK/REGISTER

LECR 2 PAGE 359

Register of Deeds Stamp & File Number

Validated by Peer Group

In Accordance With P.A. 345

Chairman *Dale Kesler*

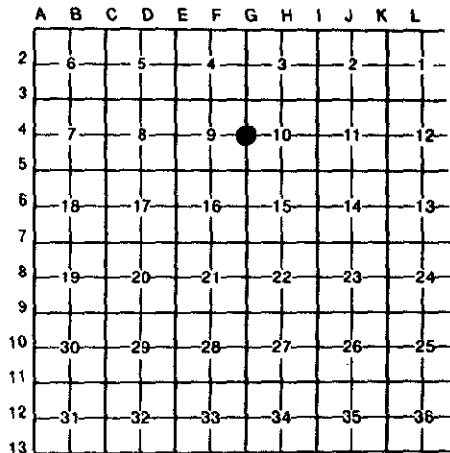
4. Lot No. _____, Recorded Plat _____

5. Private Claims _____

I, Dale L. Kesler, in a field survey on October 4, 19 94

do hereby certify that under requirements of P.A. 74, Michigan P.A. of 1970, the corner points mentioned in lines 1 and 2 above were in conformance with regulations and rules therefore as required in the current manual of survey instructions of the United States Department of the Interior, Bureau of Land Management or by a decree of a Court of Law and/or that the corner points mentioned in lines 3, 4 and 5 above were in conformance with the rules of the Michigan Board of Land Surveyors or by a Decree of a Court of Law; established, re-established, monumented, re-monumented, recovered, found as expressed below:

NOTE: Not more than 4 corners, all in the same town and range, may be recorded on this certificate.



A. Description of original monument and accessories and/or subsequent restoration:

1830 - Government Surveyor Clark set post, accessories 11" White Ash N.51° 21 Lks. 16" Hickory S.20° E. 6 1/2 Lks.; 1880 - Amos Smith, set stone above Black Walnut post, accessories, 10" Beech S.24-1/4° W. 68-2/3 Lks., 10" Beech N.72-1/3° W. 89 Lks.; 1976 Robert Prestine set 1/2" iron, accessories 24" Walnut S.15° E. 113.5'; Fence corner post N.40° E. 41.7'; 1976 - Doug Peirce, found 3/4" iron, accessories Street sign S.45° E. 42.7', Fence post N.45° E. 41.6'; Telephone pole S.45° W. 40.8'; 1986 - Wightman-Peirce, Inc. found 3/4" iron, accessories Fence post N.45° E. 47.2'; Fence post N.45° W. 46.2'; Concrete post S.45° E. 51.0'; 1989 - Wightman-Peirce, Inc. found 1/2" iron, accessories, Fence corner N.45° W. 46.23'; Fence Corner N.35° E. 46.96'; SE. Cor. Conc. fence post S.35° E. 51.35'.

B. Description of corner evidence found and/or method applied in restoring or reestablishing corner:

Found 1/2" iron, Distances to adjacent corners were reasonable and consistent. Accepted iron as best evidence of corner.

C. Description of monument for corner and accessories established to perpetuate locating the position of the corner:

Set 18" pipe w/aluminum cap and accepted as a careful and faithful perpetuation of the position of the original corner.
Set P.K. W/Washer in power pole S.53°40' E. 50.21'
Set P.K. W/Washer in Wood fence post N.45°14' W. 46.20'
Set P.K. W/Washer in Wood fence post N.44°59' E. 46.98'
Set P.K. W/Washer in Power pole S.15°51' W. 122.12'



Signed by

Dale L. Kesler

Date

November 8, 1994

Surveyor's Michigan License No. _____

No. 38117