

SURVEY & REMONUMENTATION

APR 26 1995

COMMISSION

LAND CORNER RECORDATION CERTIFICATE

Filing Requirement of Act 74, Mich. P.A. 1970

STATE OF MICHIGAN
CASS COUNTY
RECEIVED FOR RECORD

1994 NOV 8 PM 2 53

For corners in
CASS
(County)

Located In: CASS COUNTY REMONUMENTATION
Corner Code #

- | | | | | | |
|---------------------------------------|---|----------|---|-----------|-----------|
| 1. Public Land Survey | T | <u>8</u> | R | <u>14</u> | <u>G5</u> |
| | T | | R | | |
| | T | | R | | |
| | T | | R | | |
| 2. Property Controlling in Section | S | | T | | R |
| | S | | T | | R |
| 3. Miscellaneous Property in Sec. | S | | T | | R |
| | S | | T | | R |
| 4. Lot No. _____, Recorded Plat _____ | | | | | |
| 5. Private Claims _____ | | | | | |

Ann L. Simmons
CLERK/REGISTER

LIBER **2** PAGE **352**

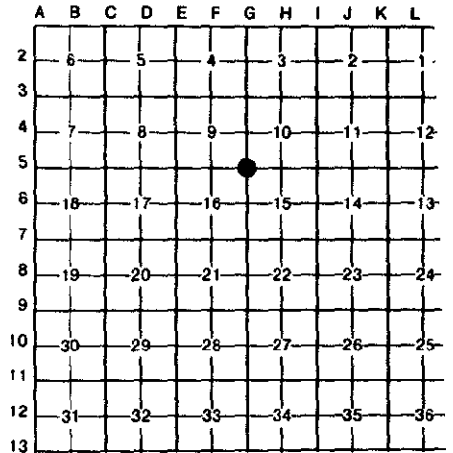
Register of Deeds Stamp & File Number

Ratified by Peer Group
 In Accordance With P.A. 345
 Chairman *D. D. ...*

I, Dale L. Kesler, in a field survey on October 4, 19 94

do hereby certify that under requirements of P.A. 74, Michigan P.A. of 1970, the corner points mentioned in lines 1 and 2 above were in conformance with regulations and rules therefore as required in the current manual of survey instructions of the United States Department of the Interior, Bureau of Land Management or by a decree of a Court of Law and/or that the corner points mentioned in lines 3, 4 and 5 above were in conformance with the rules of the Michigan Board of Land Surveyors or by a Decree of a Court of Law; established, re-established, monumented, re-monumented, recovered, found as expressed below:

NOTE: Not more than 4 corners, all in the same town and range, may be recorded on this certificate.



A. Description of original monument and accessories and/or subsequent restoration:

1830 - County Surveyor Clark, set post, 12" Black Ash N.86° E. 22 Lks. 7" Hickory N.39° W. 13 Lks.; 1880 - Amos Smith, Accessories 11" Ash S.43-3/4° W. 63 1/2 Lks., 5" Elm N.45° W. 91 Lks., 15" Beech N.65° E. 75 Lks.; 1972 - John Weaver, accessories found iron, no witnesses; 1975 - John Weaver, found iron, no witnesses; 1978 - Doug Peirce recorded corner in Liber 2, page 71, accessories 10" Maple N.20° W. 106.23', 8" Hickory S.30° W. 94.73', Power pole S.45° E. 70.53'; 1986 - Wightman-Peirce found standard monument in box, no witnesses; 1989 - Wightman-Petrie, found county monument in monument box, accessories fence post S.50° W. 47.33', Fence post S.44° E. 42.17', Sign post N.42° E. 29.66'; Cass County Road Commission found standard monument in box and replaced with 1/2" iron, accessories fence corner post SW 46.78', Power Pole SE 69.32', R.R. Spike East 51.03'.

B. Description of corner evidence found and/or method applied in restoring or reestablishing corner:

Found 1/2" iron, distances to adjacent corners were reasonable and consistent. Accepted 1/2" iron as best evidence of corner.

C. Description of monument for corner and accessories established to perpetuate locating the position of the corner:

Set standard 2' iron pipe w/aluminum cap and accepted as a careful and faithful perpetuation of the position of the original corner.
 Set P.K. w/washer in wood post S. 48° 44' W. 47.48'
 Set P.K. w/washer in wood post S. 24° 18' W. 58.04'
 Set P.K. w/washer in power pole S. 53° 44' E. 69.80'
 Q West end 15" C.M.P. N. 54° 11' W. 36.79'



Signed by *Dale L. Kesler*
 Surveyor's Michigan License No. No. 38117

Date November 8, 1994