

STATE OF MICHIGAN
DEPARTMENT
OF
NATURAL RESOURCES

LAND CORNER RECORD

Chippewa COUNTY

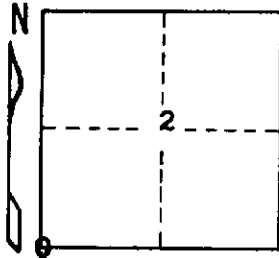
T 41N R 3E

DESCRIPTION OF CORNER Sec. Cor. common to Secs. 2-3-10-11

CORNER MONUMENT 1" Pipe with 4" Aluminum Cap

DATE MONUMENT PLACED AND WITNESSED 8-24-71

WITNESSES TO CORNER..... 16" Hard Maple (S3 NBT) N10°W 54.0'



10" Hard Maple (S10 NBT) S71°W 41.1'

AND

CIRCLE CORNER REGISTERED

DESCRIPTION IN DETAIL AS TO HOW CORNER WAS LOCATED AND IDENTIFIED OR RESTORED.

This corner re-established on line and by single proportionate measure, between Sec. Corners; one mile East and one mile West. Found no evidence at corner, which falls 40' North of an open area. Did find a few blazes, a long line, to North of this corner.

SURVEYOR'S SEAL

SIGNED

Billy D. Buckler
Billy D. Buckler
REGISTERED LAND SURVEYOR

DATE

9-22-71

DISTRIBUTION:

County Courthouse
Area Forester (Regions I & II)
District or Region Surveyor
Forestry Div., Lansing ✓

R 4047
Rev. 10/68