

STATE OF MICHIGAN
DEPARTMENT
OF
NATURAL RESOURCES
LAND CORNER RECORD

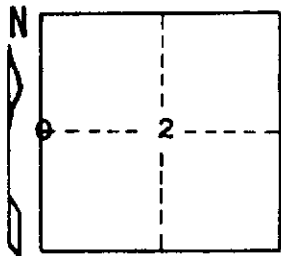
Chippewa COUNTY
T 41N R 3E

DESCRIPTION OF CORNER 1/2 Cor. bet. Secs. 2-3

CORNER MONUMENT 1" Pipe with 4" Aluminum Cap.

DATE MONUMENT PLACED AND WITNESSED 8-23-71

WITNESSES TO CORNER..... 8" Cedar (1/2 S NBT) S16°W 8.9'



10" Soft Maple (1/2 S NBT) N33°W 11.3'

AND

CIRCLE CORNER REGISTERED

DESCRIPTION IN DETAIL AS TO HOW CORNER WAS LOCATED AND IDENTIFIED OR RESTORED.

This corner re-established midway and one line bet. two Sec. Corners.
Found no evidence of Cedar bearing tree. Did find some blazes on line to North
and South.

SURVEYOR'S SEAL

SIGNED Billy D. Buckler
Billy D. Buckler
REGISTERED LAND SURVEYOR

DATE 9-22-71

DISTRIBUTION:

County Courthouse
Area Forester (Regions I & II)
District or Region Surveyor
Forestry Div., Lansing

R 4047
Rev. 10/68