

MICHIGAN  
DEPARTMENT OF CONSERVATION  
FORESTRY DIVISION

# LAND CORNER RECORD

T. 41N N. R. 5E

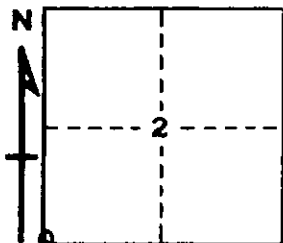
Chippewa COUNTY

DESCRIPTION OF CORNER Sec. Cor. common to Secs. 2-3-10-11

CORNER MONUMENT 1" pipe with 4" aluminum cap

DATE MONUMENT PLACED AND WITNESSED 8-24-65

WITNESSES TO CORNER..... Marked 8" Cedar (S10 NBT) S70°W 37 lks



CIRCLE CORNER REGISTERED

10" Cedar (S2 NBT) East 62½ lks

6" Cedar (S11 NBT) S23°E 68 lks

AND

DESCRIPTION IN DETAIL AS TO HOW CORNER WAS LOCATED AND IDENTIFIED OR RESTORED.

Replaced this corner from both original witnesses; a Cedar, N31°W 18 lks, lying face down, rotted but with face intact, with scribe marks in excellent condition. And a W. Pine stump bearing S57°W 26 lks. with remains of lower blaze and notch evident.

Cor. lies ½ chain North of road.

SURVEYOR'S SEAL

*Billy D. Buckler*  
SIGNED Billy D. Buckler DATE 1-28-71  
REGISTERED LAND SURVEYOR