

MICHIGAN  
DEPARTMENT OF CONSERVATION  
FORESTRY DIVISION

LAND CORNER RECORD

T. 41N N.R. 5E

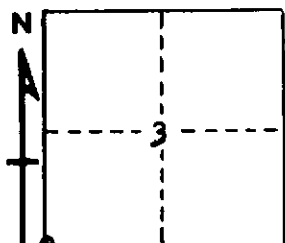
Chippewa COUNTY

DESCRIPTION OF CORNER Sec. Cor. common to Secs. 3-4-9-10

CORNER MONUMENT 1" iron pipe

DATE MONUMENT PLACED AND WITNESSED 12-29-65

WITNESSES TO CORNER..... 12" Hard Maple (S4 NBT) N6°W 33.0'



5" Cedar (S9 NBT) S9°W 36.3'

AND

CIRCLE CORNER REGISTERED

DESCRIPTION IN DETAIL AS TO HOW CORNER WAS LOCATED AND IDENTIFIED OR RESTORED.

This corner re-witnessed as set by unknown surveyor.  
Corner lies west of quarry clearing.  
Found old blazes to west but no evidence of original witnesses.

SURVEYOR'S SEAL

SIGNED Billy D. Buckler DATE 1-28-81  
REGISTERED LAND SURVEYOR