

**LAND CORNER RECORDATION CERTIFICATE**  
**Filing Requirement of Act 74, Mich. P.A. 1970**

For corners in  
Chippewa

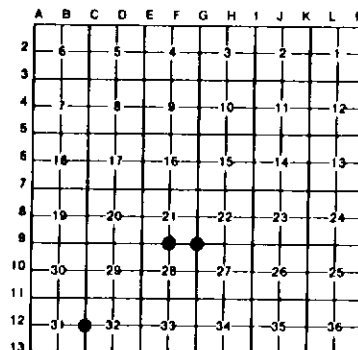
(County)	Located In:	Corner Code ##
1. Public Land Survey	T 43N R 2E	C12
	T 43N R 2E	F9
	T 43N R 2E	G7
2. Property Controlling in Section	T R	
	S T R	
3. Miscellaneous Property in Sec.	S T R	
	S T R	

Register of Deeds Stamp & File Number

4. Lot No. \_\_\_\_\_ Recorded Plat \_\_\_\_\_  
 5. Private Claims \_\_\_\_\_

I, Stephan J. Szyszkoski, in a field survey on April 21, 1992, 19\_\_\_\_ do hereby certify that under requirements of P.A. 74, Michigan P.A. of 1970, the corner points mentioned in lines 1 and 2 above were in conformance with regulations and rules therefore as required in the current manual of survey instructions of the United States Department of the Interior, Bureau of Land Management or by a decree of a Court of Law and/or that the corner points mentioned in lines 3, 4 and 5 above were in conformance with the rules of the Michigan Board of Land Surveyors or by a Decree of a Court of Law, established, re-established, monumented, re-monumented, recovered, found as expressed below:

**NOTE: Not more than 4 corners, all in the same town and range, may be recorded on this certificate.**



**A. Description of original monument and accessories and/or subsequent restoration.**

(C12) Original corner established by U.S. Deputy Surveyor James P. Mullett, 1845. Original witnesses: Cedar 18 N56W 10, Fir 14 S10E 17. County Surveyor F.H. Brown, in 1926, shows in record that corner is located midway between adjacent section corners, 2582' north and south. No monument or witnesses are noted. Found no subsequent record.

(F9) Corner recorded in 1975 by Billy D. Buckler as a 1" pipe with the following witnesses: Fence corner, North 32.5'; Fence corner, South 32.5'.

(G7) Corner recorded in 1975 by Billy D. Buckler as a 1" pipe with no witnesses. Buckler's 1975 survey of the North 1/2 of Section 28, T43N-R2E, recorded in Liber 2 of surveys, Page 83, Chippewa County Records, shows distances of 2615.7' West and 2663.8' South to monumented section corners F9 and G10.

**B. Description of corner evidence found and/or method applied in restoring or reestablishing corner:**

(C12) Original post and accessories not recovered. Accepted existing fencelines running east and west and fencelines running north and south along the gravel road as the best available evidence of the original corner. Monumented the corner position with a 1"x32" painted iron pipe with yellow plastic R.L.S. #33986 cap 6" below gravel surface being at the extension of the fencelines east and west, 25.8' west of n-s fenceline and 25.8' east of n-s fenceline. From the corner, C11 recorded by Ostling in 1973 is 2580.52' north, and C13 (C1 of T42N-R2E) Recorded by MSND on Land corner certificate File No. 242, is 2580.89' south.

(F9) Found and accepted Buckler's 1" pipe. Fence corner to north still exists and agrees with Buckler's record. Fence corner south is gone. Rewitnessed the corner as found.

(G7) Found a 1" pipe in the intersection of gravel trails north, south, east, and west. Distances to adjacent section corners, monumented and recorded by Buckler, are 2615.55' west to F9 and 2660.89' south to G10. Despite the discrepancy with Buckler's distance to the south, I accept this pipe as the recorded monument. Rewitnessed the corner as described below.

**C. Description of monument for corner and accessories established to perpetuate locating the position of the corner.**

(C12) Set 1"x32" pipe as described. S54W 32.4' Set nail and MDNR tag NW face 5" spruce; N81W 26.0' Set nail and MDNR tag S. face wood fence corner post; N40W 28.68' set nail and MDNR tag SW face power pole; S80E 26.04' Set nail and MDNR tag N. face wood fence corner post. Centerline of gravel road surface is 3' east. Did not blaze any trees. Bearings are magnetic (decl. 7 deg. West).

(F9) Found 1" pipe 4" below gravel surface. S16N 39.7' set nail and MDNR tag E. face 9" pine; N20W 31.45' set nail and MDNR tag in W. face 8" apple; N37E 32.45' set nail and MDNR tag in E. face wood corner fence post; N44E 45.13' set nail and MDNR tag W. face 8" red pine. Bearings are magnetic (decl. 7 deg. West).

(G7) Found 1" pipe in road intersection. S49W 26.7' set nail and MDNR tag in 9" twin oak; N74W 79.85' set nail and MDNR tag in N. face 12" oak stump; N36W 45.93' set nail and MDNR tag in NE face 8" red pine; N41E 48.55' set nail and MDNR tag in W. face 10" red pine. Blazed and scribed these witness trees at BH and root crown. Bearings are magnetic (decl. 7 deg. West).

Signed by

Surveyor's Michigan License No.

*Stephan J. Szyszkoski*  
 33986



MAY 12, 1992