

LAND CORNER RECORDATION CERTIFICATE
Filing Requirement of Act 74, Mich. P.A. 1970

For corners in
 Chippewa
 County

	Located In:	Corner Code #/
1. Public Land Survey	T 43N R 2E	D11
	T 43N R 2E	D7
	T R	
	T R	
2. Property Controlling in Section	S 20 T 43N R 2E	7
	S T R	
3. Miscellaneous Property in Sec.	S T R	
	S T R	

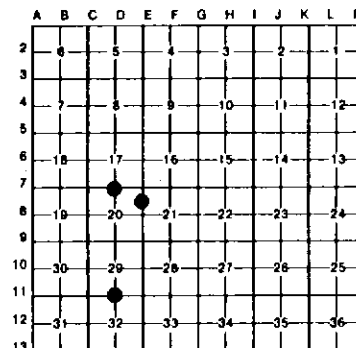
Register of Deeds Stamp & File Number

4. Lot No. Recorded Plat
 5. Private Claims

D7 January 27, 1992
 7 January 27, 1992

I, Stephan J. Szyszkoski, in a field survey on D11 February 11, 1992, 19____, do hereby certify that under requirements of P.A. 74, Michigan P.A. of 1970, the corner points mentioned in lines 1 and 2 above were in conformance with regulations and rules therefore as required in the current manual of survey instructions of the United States Department of the Interior, Bureau of Land Management or by a decree of a Court of Law and/or that the corner points mentioned in lines 3, 4 and 5 above were in conformance with the rules of the Michigan Board of Land Surveyors or by a Decree of a Court of Law, established, re-established, monumented, re-monumented, recovered, found as expressed below.

NOTE: Not more than 4 corners, all in the same town and range, may be recorded on this certificate.



A. Description of original monument and accessories and/or subsequent restoration:

(D11) Corner established by John Mullett, 1845. Accessories: Fir 10 N32W 20, Birch 9 S67W 16. Corner recorded by Ostling (LCRC rec. L. 1 P. 79, Chippewa County Records) in 1973 as set 1/2" iron at government distance east of SW corner of section 29 T43N-R2E and in centerline of old grade.
 (D7) Corner established by John Mullett, 1845. Accessories: Sugar 12 N17E 22, do 10 S17W 10. Found no subsequent record.
 (7) Corner not established in original survey. Found no subsequent record.

B. Description of corner evidence found and/or method applied in restoring or reestablishing corner:

(D11) Original post and accessories not recovered. From the pattern of cultural improvements along the south line of section 29, I conclude that the original corner was established on a random line east from the SW corner of section 29 and not midway on the corrected line between section corners as stated in the Government notes. Evidence of a similar situation also exists in regard to the South 1/4 corner of Section 20, T43N-R2E. The improvements noted consist of: an old road grade, old E-W fence lines both north and south of the section line, and an old bridge abutment over the East Branch of the Munuscong River. These improvements appear on aerial photos dated 1939. The photos show the NW 1/4 of section 29 to be subdivided with fences and/or brushlines along the 1/16th lines. I reestablished the corner midway between the old E-W fence lines, in the center of the extension of the old grade, and at the same distance east of the west N-S 1/16 line fence as said fence is east of the SW corner of section 29 (C11 recorded by Ostling in 1973).
 (D7) Original post and accessories not recovered. Excavated 10'x10'x2' deep hole at corner location (in gravel road) and found nothing. Reestablished corner on extensions of old north-south fence lines and midway between remains of east-west fence lines 31' north and 31' south. This position checks well with corners east and west.
 (7) Established corner equidistant and on a straight line between E7 and E8, both as recorded this date.

C. Description of monument for corner and accessories established to perpetuate locating the position of the corner:

(D11) Set 1"x32" painted iron pipe with 4" cast aluminum MDNR tablet. N78E 167.7' MDNR tag in 9" triple W. Birch; South 177.0' MDNR tag in 10" W. Birch; N21E 226.5' MDNR tag in 12" W. Birch; N83W 11.87' (on the section line) Fd. 1/2" capped iron bar previously recorded as the corner. Bearings are magnetic (decl. 7 deg. W.). Trees blazed and scribed at base and BH.	(D7) Set 1"x32" painted iron pipe with yellow plastic RLS cap. S53W 22.7' MDNR tag NE face 6" oak; S10W 33.65' MDNR tag east face B" maple; N55W 51.35' MDNR tag SW face 4" oak; N9E 26.25' MDNR tag W. side fence post; North 6' c/l gravel surface. Bearings magnetic (decl. 7 deg. W.). Trees blazed and scribed at base and BH.	(7) Set 1"x32" painted iron pipe with yellow plastic RLS cap. N77E 25.37' MDNR tag S. face fence post; S60W 26.77' MDNR tag in S. face fence post; S86W 25.9' MDNR tag in S. face 5" oak; N12E 63.35' MDNR tag in W. face B" oak; West 3' c/l N-S trail; North, 41' fence line west. Bearings magnetic (decl. 7 deg. W.). Trees blazed and scribed at base and BH.
--	---	--

Signed by Stephan J. Szyszkoski
 Surveyor's Michigan License No. 33986



Date 2-12-1992