

LAND CORNER RECORDATION CERTIFICATE

Filing Requirement of Act 74, Mich. P.A. 1970

For corners in  
Chippewa

(County)

Located In:

Corner Code -#

1. Public Land Survey	T	43N	R	2E	C7
	T	43N	R	2E	E8
	T	43N	R	2E	E7
	T		R		
2. Property Controlling in Section	S		T	R	
	S		T	R	
3. Miscellaneous Property in Sec.	S		T	R	
	S		T	R	

Register of Deeds Stamp & File Number

4. Lot No. Recorded Plat  
5. Private Claims

E7 January 27, 1992

E8 January 27, 1992

C7 January 22, 1992

I, Stephan J. Szyszkoski, in a field survey on C7 January 22, 1992, do hereby certify that under requirements of P.A. 74, Michigan P.A. of 1970, the corner points mentioned in lines 1 and 2 above were in conformance with regulations and rules therefore as required in the current manual of survey instructions of the United States Department of the Interior, Bureau of Land Management or by a decree of a Court of Law and/or that the corner points mentioned in lines 3, 4 and 5 above were in conformance with the rules of the Michigan Board of Land Surveyors or by a Decree of a Court of Law, established, re-established, monumented, re-monumented, recovered, found as expressed below

**NOTE: Not more than 4 corners, all in the same town and range, may be recorded on this certificate.**

A. Description of original monument and accessories and/or subsequent restoration:

(C7) Corner established by John Mullett, 1845. Accessories: Fir 14' N17W 35, Maple 16 S59E 12. Corner noted in County Surveyor record by F.H. Brown Aug. 1908 as "Found wagon hub set by former survey. Put in large cedar post and 14" iron and some broken parts of school desks". Brown's accessories include: 187.5' N. to range of S. side of school, 33' south and 23.5' west of fence corner, 34' north and 32' west of fence corner, N7 1/2W to pump, N35W 41' to fence corner, S42E 46' to fence corner.

(E8) Corner established by John Mullett, 1845. Accessories: Fir 12 S76W 12, do 12 N32E 11. Found no subsequent record.

(E7) Corner Established by John Mullett, 1845. Accessories: Birch 10 N73W 36, Hemlock 10 S88E 8. Line notes show: "East 7.00 descend bluff and enter swamp" and "North 1.00 descend bluff and enter swamp". Found no subsequent record.

B. Description of corner evidence found and/or method applied in restoring or reestablishing corner:

(C7) Original accessories not recovered, excavated 10'x10'x3' deep hole at corner location defined by remains of Brown's accessories and found nothing. Replaced corner 34' north and 32' west from rotting remains of ancient fence corner post in SE quadrant. Newer fence corner in NE quadrant is 33' north and 18.5' east. School building was removed prior to 1939. Evidence of the location of the south wall of the school exists in the form of a row of rocks bounding an area of slightly raised topography. Distance north to the range of this row checks well with Brown's call.

(E8) Original post and accessories not recovered. Excavated 10'x10'x18" hole at corner location and found nothing. Reestablished corner on range of old fence line to east and same distance west of old north-south fence as observed at section corners 1/2 mile north and south (22.5').

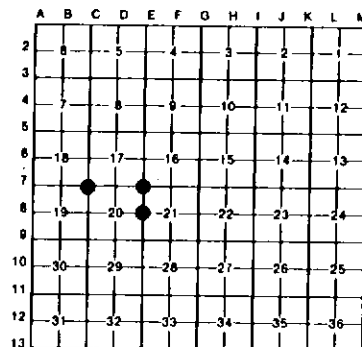
(E7) Original post and accessories not recovered. Excavated 10'x10'x18" hole at corner location and found nothing. Reestablished corner 66' south of well-defined top of bluff and midway between N-S fence to east and remains of N-S fence to west.

C. Description of monument for corner and accessories established to perpetuate locating the position of the corner:

(C7) Set 1"x32" painted iron pipe with yellow plastic RLS cap 6" below the road surface. N44E 38.0' Nail and MDNR tag in NW cor of fence post; N21E 86.6' nail and MDNR tag in NW cor fence post; N53W 30.55' nail and MDNR tag in NE face 12' aspen, blazed and scribed; S42W, 46.6' nail and MDNR tag in NW face 5' aspen, blazed and scribed. Bearings are magnetic (decl. 7 deg. W.)

(E8) Set 1"x32" painted iron pipe with yellow plastic RLS cap. S25W 62.6' MDNR tag in E. face 10' oak; N67W 43.0' MDNR tag in S. face 10' oak; N25E 16.15' MDNR tag in W. face 4' maple; S53E 23.3' MDNR tag in SW face 4' maple. Corner lies on east edge of n-s trail. Bearings magnetic (decl. 7 deg. W.). Trees blazed and scribed at base and BH.

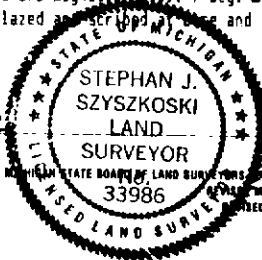
(E7) Set 1"x32" painted iron pipe with yellow plastic RLS cap. N86E 22.9' MDNR tag in S. face fence post; S60E 27.55' MDNR tag in N. face 10' maple; S21W 49.0' MDNR tag in SE face 6' oak; S69W 24.65' MDNR tag in N. face 6' maple; North 32' c/l of gravel surface to west. Bearings are magnetic (decl. 7 deg. W.). Trees blazed and scribed at base and BH.



Signed by Stephan J. Szyszkoski

Date 2-12-1992

Surveyor's Michigan License No. 33986



FORM APPROVED BY MICHIGAN STATE BOARD OF LAND SURVEYORS, JAN. 28, 1971  
MAY 14, 1975  
REVISED JAN. 1983